

LivLoc 

LUXURY CLICK VINYL



Atkinson & Kirby

Est. 1903

Welcome to **LivLoc**

Luxury Click Vinyl



LivLoc combines the authenticity and beauty of natural products with the rugged durability of vinyl technology.

Easy to install and maintain, it is guaranteed to last. Suitable for installation in both commercial and residential environments; giving you the freedom to enjoy beautiful design wherever you want it.

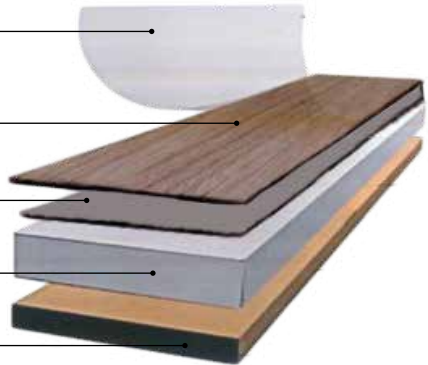
Wear Layer
PU Processing Technology

Printed Decoration

Fibre Glass Layer

Stability Layer

Base Layer



residential



commercial



residential



commercial



bathroom



kitchen



easy maintenance



lock system



quick installation



quiet floor



water resistant



wear proof

CONTENTS

Planks

Driftwood Oak	4
Desert Sand	5
Lakeland Oak	6
Antique Cinnamon	7
Oak	8
Antique Oak	9
Heritage Oak	10
Mountain Oak	11

Tiles

Sandstone	12
Marbled Stone	13
Slate	14

Technical

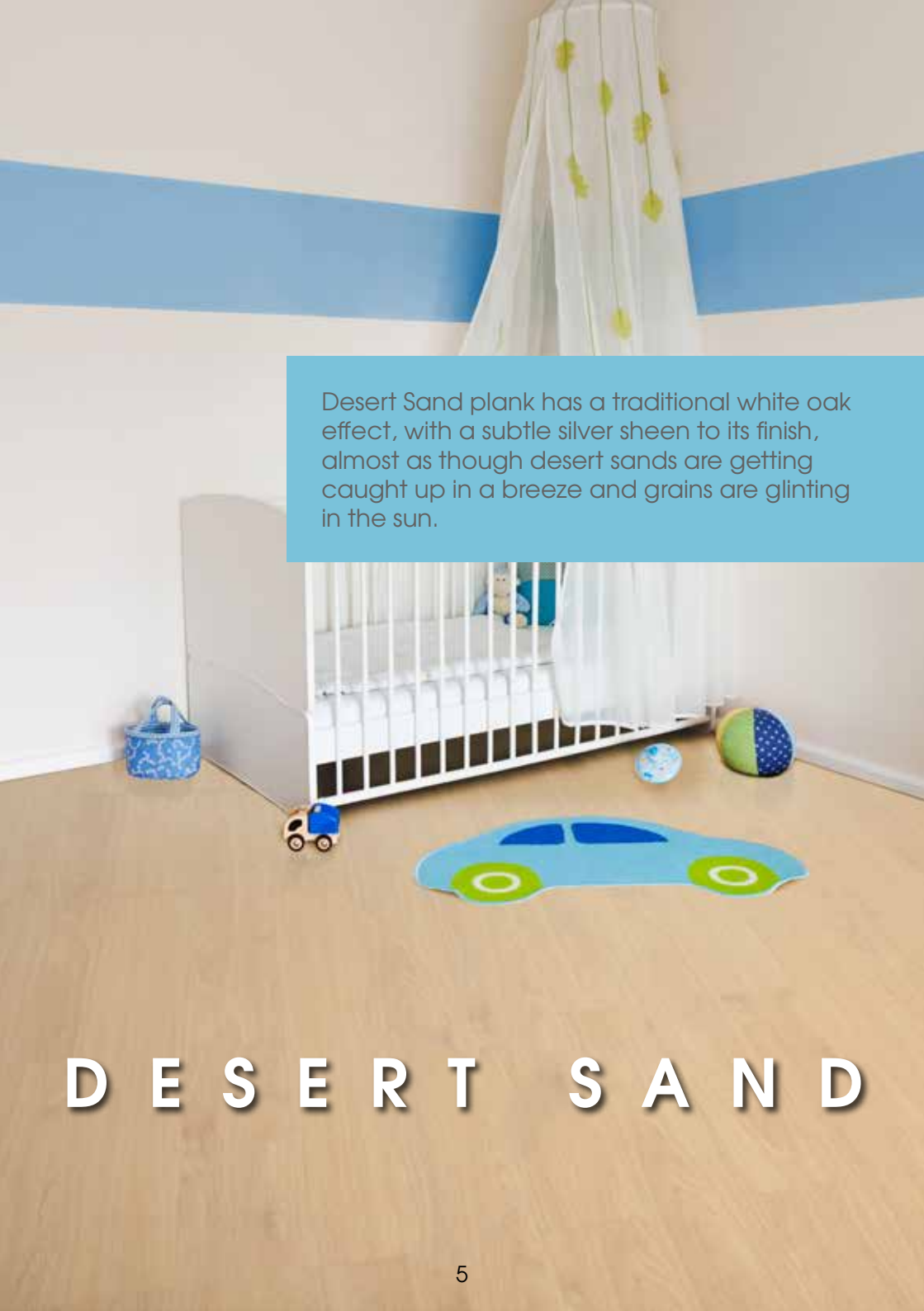
Technical Data	15
Fitting Instructions	15
Accessories	15



*Product images are for illustrative purposes only


In keeping with the fashionable nautical interior design look, the Driftwood Oak planks would look as much at home in an ocean front cottage or beach hut as in your very own living room.

DRIFTWOOD OAK


A child's nursery room featuring a white crib with a white canopy decorated with yellow flowers. The room has a light wood floor and a blue decorative band on the wall. A blue patterned basket, a small blue toy truck, and a car-shaped rug with green wheels are on the floor. A blue and green ball is also visible.

Desert Sand plank has a traditional white oak effect, with a subtle silver sheen to its finish, almost as though desert sands are getting caught up in a breeze and grains are glinting in the sun.

D E S E R T S A N D



Lakeland Oak realistically mimics Mother Nature's patterns in an easy-to-clean and easy to maintain material. The beautiful multi-coloured effect brings individuality and style to any room.



LAKELAND OAK

ANTIQUÉ CINNAMON




The mid-browns of the Antique Cinnamon plank offers a rustic look, reminiscent of the flavours of winter spice. The tactile texture of the board imitates a brushed wood effect, bringing sumptuous warmth for many winters (and summers!) to come.



These very popular oak-effect planks feature realistic knot and grain details, making the floor look and feel like natural wood. Reflecting Mother Nature's hypnotic artwork, the planks have the look without the limitations of the wood.

O A K



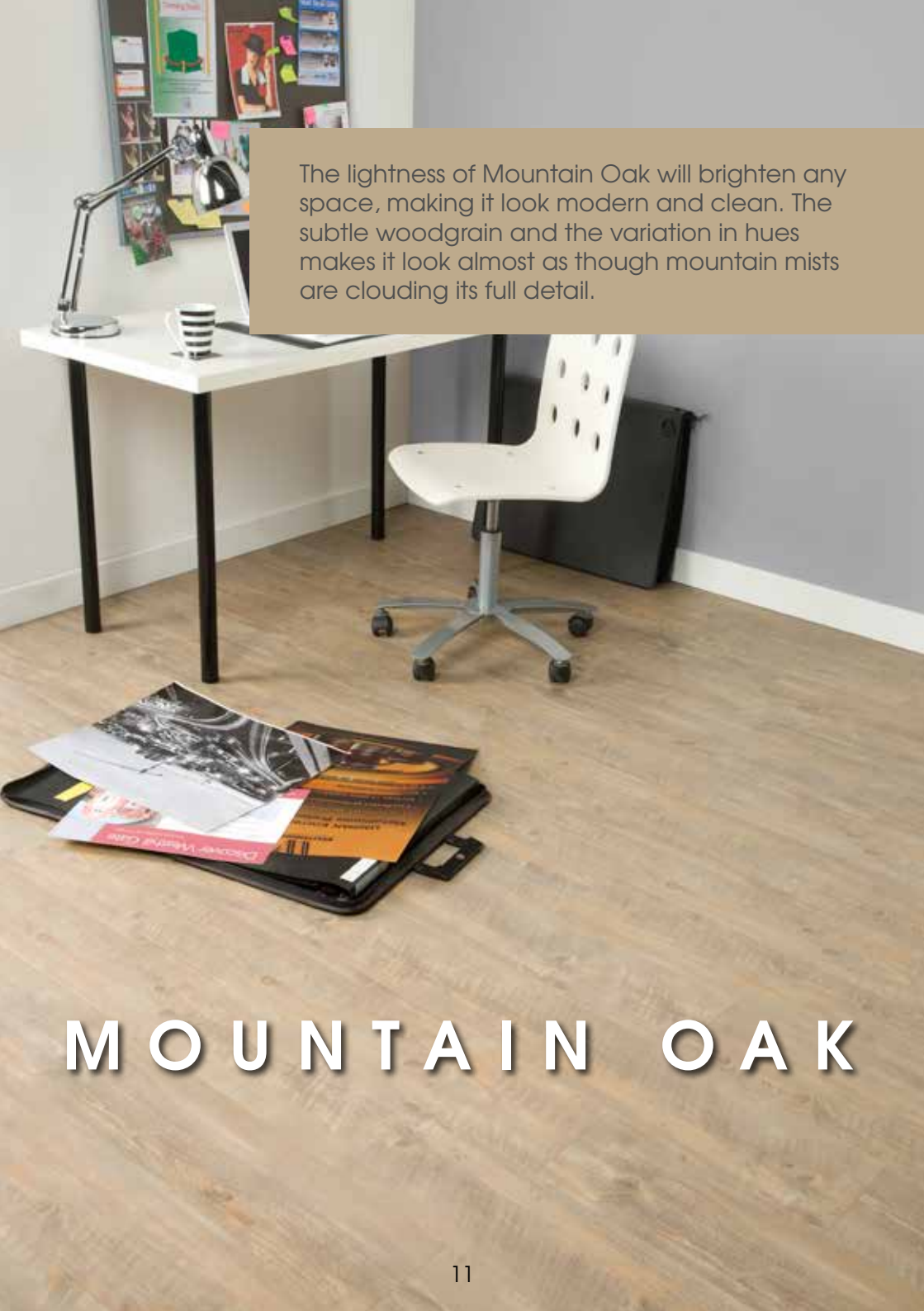
With a mesmerising hand-scraped wood grain effect like rich swirls of coffee, the dark brown of the Antique Oak will bring a calmness and cosiness in to any space.

ANTIQUÉ OAK



Stylish and unique, with the beautiful effect of natural aging that comes from usage and experience, Heritage Oak will bring a sense of history and adventure to any room.

HERITAGE OAK

A modern office desk with a white top and black legs, a white ergonomic chair, and a wooden floor with a stack of magazines.

The lightness of Mountain Oak will brighten any space, making it look modern and clean. The subtle woodgrain and the variation in hues makes it look almost as though mountain mists are clouding its full detail.

M O U N T A I N O A K

Designed to look and feel like real sandstone. The stone-like embossing of the tiled floor will feel convincingly real underfoot, while the colour creates a fresh, yet warming space.

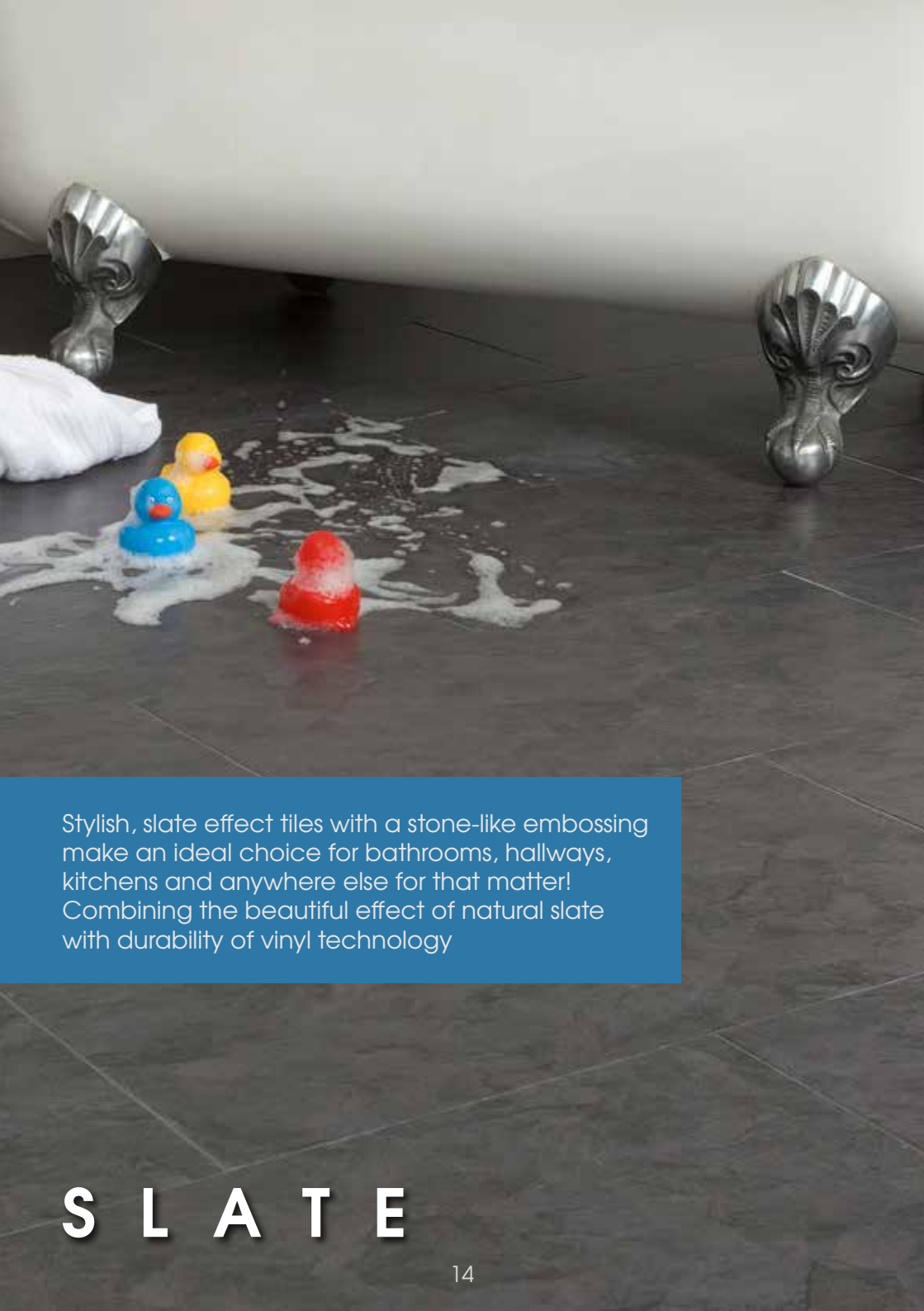


S A N D S T O N E

Thanks to its attractive colour and texture, the marble effect tile adds a sophisticated look to any room in the home that requires a hard-wearing and durable floor, such as a kitchen or hallway. As well as practical, it is attractive; bringing a fresh, contemporary feel to any space.

MARBLLED STONE






Stylish, slate effect tiles with a stone-like embossing make an ideal choice for bathrooms, hallways, kitchens and anywhere else for that matter! Combining the beautiful effect of natural slate with durability of vinyl technology

S L A T E

Technical Data

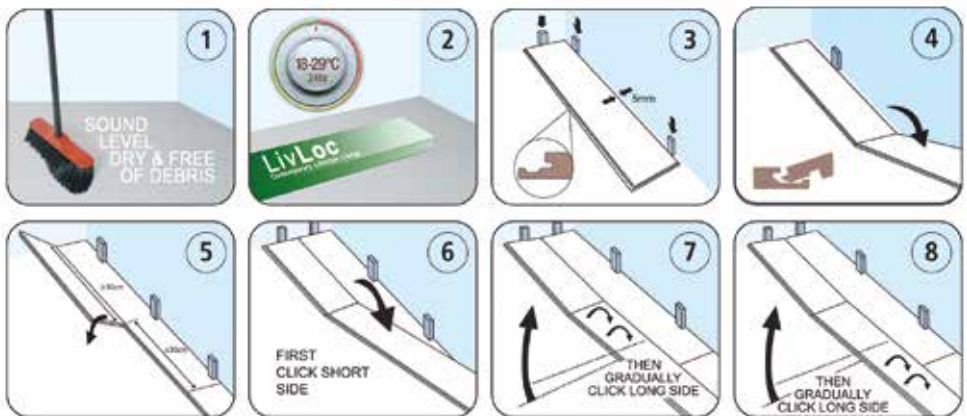
Format:	Plank	Tile
		
Board size:	5 x 180 x 1220mm	5 x 304.8 x 609.6mm
Wear layer:	0.5mm	0.5mm
Profile:	Uniclic	Uniclic
Pack size:	1.76m ² = 8 boards	1.86m ² = 10 boards
Slip resistance:	R10	R10

Accessories Available

Scotia - colours to match flooring. 

Soundclick Underlay - recommended for LivLoc 

Fitting Instructions



For more technical information, full list of accessories and installation instructions please go to www.livloc.co.uk



www.livloc.co.uk

Available from:

Atkinson & Kirby is a trading name of the Archwood Group.
www.archwoodgroup.com

Tel. 01695 573 234

