

category	Sound absorber
description	Custom printed face FG acoustic panel
part code	Custom order only



PROSONIC FG ACOUSTIC PANELS have a rigid, acoustic-rated, high quality fibreglass core with a Class 1 or Class 0 fabric covering available in an extremely wide selection of colours.

These panels are a durable, cost-effective solution for reducing excessive reverberation in large spaces.

Units can also be custom made with hooks and wires for easy ceiling mounts or split battens for easy wall mounting that is ideal if you require them to be removable.

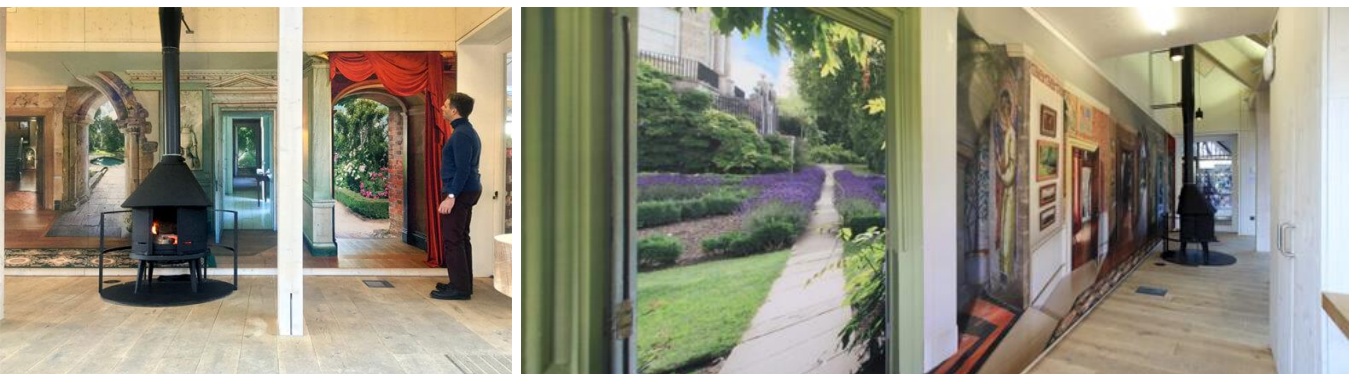
See fixing methods listed overleaf.

Available with a digitally printed fabric face. Virtually any image can be used as long as the aspect ratio is maintained and the resolution is high enough for the panel size. We require images with at least 300dpi with a similar aspect ratio to the panel you require. We print onto the white acoustically transparent fabric 'Adobo' from the [Lucia](#) fabric range.

We can also print a single image across multiple panels as can be seen in the following images:

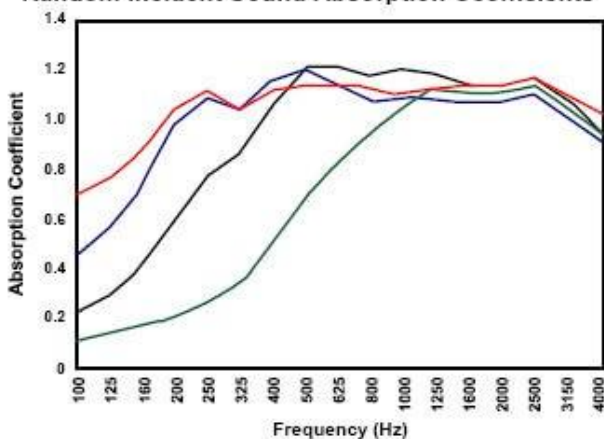
Benefits

- Class 0 fire rated.
- Absorption classes A-D.
- Square/bevelled edge profiles.
- Various mounting systems available.
- Available in standard and custom sizes.



Acoustic Performance

Random Incident Sound Absorption Coefficients



Applications

Custom Audio Design Ltd's [ProSonic FG acoustic absorption panels](#) are often used to meet **BB93 standards** for reverberation control within schools.

Also suitable for:

- offices
- theatres
- auditoriums
- studios
- churches
- gymnasiums
- tele-conferencing suites etc.

Technical Specification

Product	Prosonic FG Acoustic Panels
Colour	Custom print (on Lucia Fabric – Adobo/White)
Size (Rectangular)	96kg density fibreglass core, any size up to 2700mm x 1200mm. Standard unit sizes: 600mm x 600mm 1200mm x 600mm 1200mm x <1200mm 1800mm x 1200mm 2400mm x 1200mm 2700mm x 1200mm
Shapes	As well as rectangular panels, square, round, triangular, circular or parallelogram shaped panels are also available. Cut-outs for light sockets, switches, odd angles etc. can be accommodated if required.
Thickness	Any thickness in multiples of 25mm Standard thicknesses: 25mm, 50mm, 75mm or 100mm
Fire Rating	Class 0
Finish	Acoustic fabric
All panels are manufactured to dimensional tolerances of ± 3 mm	

Fixing Options:

When ordering any panels please advise if you need fixings. **Panels are not supplied with fixings** unless specifically requested. Certain types of fixings need to be specified in advance.

There will be an additional cost for supplying various clips, glues, chains, wires, battens etc. If you are unsure what to use contact our Technical Department.

For Walls Option 1 - Metal Spikes

Metal impaling clips are screwed into the wall.
Adhesive is applied to the panel and the wall.
The panel is then offered up against the wall spikes and fixed in place.

This method does not allow easy removal of the panels.

For smaller panels spikes can be used without adhesive so the panels can be removed.
However, this does not provide a permanent fix so would not be suitable in areas such as schools.



For Walls Option 2 - Aluminium Battens

This method leaves virtually no gap between the panel and the wall (about 3mm).

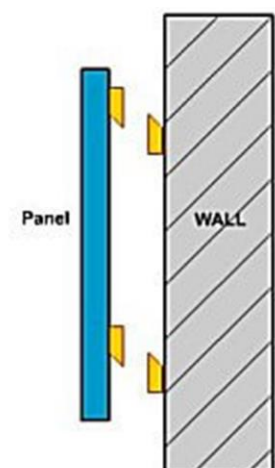
This system is available for 25 and 50mm thick panels.

The battens come as a pair.

One is pre-fixed to the panel the other slides off and is screwed to the wall. The panel is then lowered down in place.

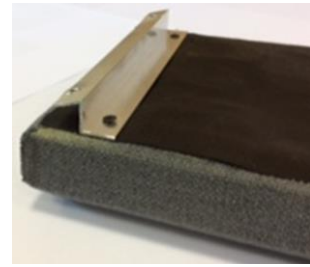
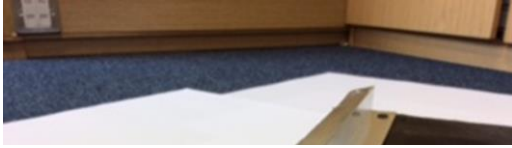
This option allows for the panels to be remove-able.

Panel offered up to the wall batten and then dropped on.



For Ceilings Option 1 - Metal "Z" Bars

This option allows for very large, heavy panels to be hung close from the ceiling and is especially suited to sloping ceilings.



For Ceilings Option 2 - Cloud Hooks

Probably the easiest and most versatile method of hanging from ceilings. The hooks are simply screwed into the panel which can then be hung from chains.

Not generally recommended for large heavy panels. The black backing scrim needs to be cut away before these fixings are screwed in. Contact our technical department for method and placement.

NB This image is not to scale and fixings should not be close to the panel edges.



For Ceilings Option 3 - Embedded "L" Bars

This method allows very large, heavy panels to be hung from the ceiling at a pre-determined distance.



For Ceilings Option 4 - Wire Suspension Kits

Complete with a 1.5m cable, gated hook end, and wire loop.

Fully adjustable with a built in friction clutch.



For Ceilings/Walls Option 5 - Magnets

Ideal for fixing panels to a metal surface.

Suitable if panels need to be removable.





NBS

- **Manufacturer:** Custom Audio Designs Ltd
 - **Web:** <http://www.customaudioidirect.co.uk/>
 - **Tel:** +44 (0) 1730 269572
 - **Product ref:** Custom printed face FG acoustic panel
- **Size:** [??? x ??? mm]. Any size up to 2700 x 1200mm
- **Thickness:** [Standard sizes: 25, 50, 75 or 100 mm]
Any thickness in multiples of 25mm
- **Fabric/colour:** [Lucia LC _____]
- **Mounting:** [Surface mount using spikes, battens or bars]
[Surface mount using magnets to metal surfaces]
[Ceiling wires]
- **Edge detail:** Square/bevelled