

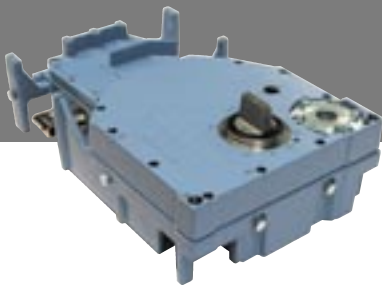
Opening Doors Worldwide!

Swing Door Drive  
SWINGDOOR Power Drive 1401



*invisible*

★★★★★  
**TORMAX**  
AUTOMATIC



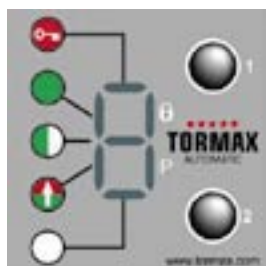
## The Invisible Force

Everywhere, where architecture relates not only to purpose, but also to aesthetics – SWINGDOOR Power Drive 1401; the flush-to-floor mounted operator for single or double-leaf swing doors.

Advanced technology guarantees high availability as well as quiet, trouble-free operation matched to the users' requirements. Highest safety for people is ensured by intelligent obstacle recognition and through evaluation of monitored sensors.

The SWINGDOOR Power Drive 1401 protects your investment for a long time. New regulations or changed use of the building often change the requirements of the entrance. The modular design and high functionality make adaptations very easy.

SWINGDOOR Power Drive 1401, persistent, strong, invisible.



Multi-functional operating and programming panel

### Field of application

- Unlimited deployment for interior and outer doors, light to heavy doors, all door designs, for single or double-leaf applications.

### Benefits

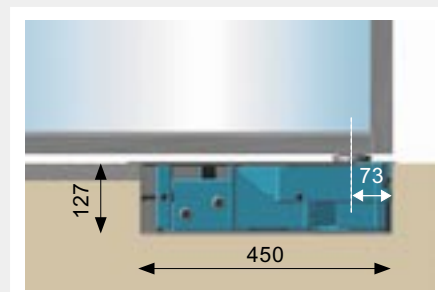
- Easy to operate owing to user-friendly control panel or simple operating-mode selector
- Unlimited lifetime due to wear-free synchronous motor technology
- Unlimited choice of the door form and materials owing to well thought-out connection solutions
- Extremely quiet operation due to electromechanical drive system
- Practical functionality and user-friendly motion control from gentle to dynamic due to intelligent control system
- Stable behaviour on wind load
- High safety for people thanks to integrated reversing mechanism and external monitored safety sensors
- Unrestricted manual operation in the current-free state – no automatic self-blocking
- No external doorstopper necessary owing to integrated end stops
- Current-free closing or current-free opening

### Optional

- Emergency power supply with battery

### Standards

- DIN 18650
- The unit fulfils all safety-relevant requirements of the EU

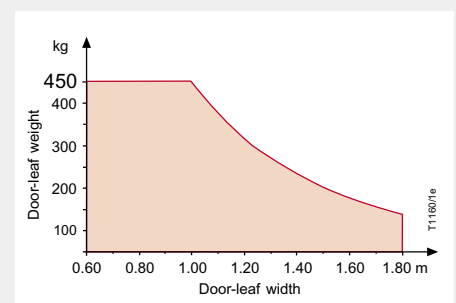


### Technical Data

Dimensions L x W x H	450 x 293 x 127 mm
Mains connection	230/115 V AC 50–60 Hz
Power consumption	4 ... 250 W
Sensor power supply Lock power supply	24 V DC/0,75 (1,5) A 0 ... 40 V DC, max. 2 A, max. 24 W
Temperature range	–20 to +50 °C
Protective class: Control unit Drive unit	IP 55 IP 67 *
Operating modes	6
Opening angle	0 – 100°
Opening speed adjustable	max. 60°/s
Closing speed adjustable	max. 60°/s
Hold-open time adjustable	0–600 s Permanently open
Inputs basic version	8 freely programmable
Outputs basic version	2 freely programmable
Interface	LIN Bus, CAN Bus, RS 232
Double-leaf swing door	Master-slave, coordinated

\* 7 days water to upper edge of housing

### Maximum door-leaf weights



★★★★★  
**TORMAX**  
AUTOMATIC

**TORMAX**  
Landert Motoren AG  
CH-8180 Bülach-Zürich  
www.tormax.com  
info@tormax.com

TORMAX is a division  
and a registered  
trademark of  
Landert Motoren AG