



Product Service

# CERTIFICATE

No. Z2B 14 02 15347 036

**Holder of Certificate:** **TORMAX**  
**Landert Motoren AG**  
 Unterweg 14  
 8180 Bülach  
 SWITZERLAND

**Production Facility(ies):** 86442

**Certification Mark:**



**Product:** **Automatic door drives**  
**iMotion**

**Model(s):** **iMotion 1301, iMotion 1301.S,**  
**iMotion 1301.FIRE**  
**iMotion 1401, iMotion 1401.FIRE**

**Parameters:**

rated voltage:	230/115 VAC
rated frequency:	50-60 Hz
protection class:	I

further specification concerning rated current,  
 rated power, torque of inertia,  
 mass of leaf and classification  
 see page 2

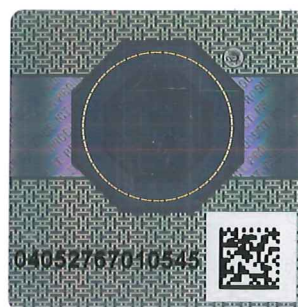
**Tested according to:** EN 16005:2012  
 DIN 18650-1:2010  
 EN 60335-2-103/A11:2009  
 EN 60335-1:2012  
 EN ISO 13849-1:2008

The product was tested on a voluntary basis and complies with the essential requirements. The certification mark shown above can be affixed on the product. It is not permitted to alter the certification mark in any way. In addition the certification holder must not transfer the certificate to third parties. See also notes overleaf.

**Test report no.:** 713031874

**Date,** 2014-02-14

  
 (Werner Müller-Starke)



**CERTIFICATE**  
**No. Z2B 14 02 15347 036**



Product Service

**Parameter**

iMotion	1301	1301.S	1301.FIRE	1401	1401.FIRE
rated current	1.2/2.4A	1.4/3.1A	1.4/3.1A	1.5/3.0A	1.5/3.0A
rated power max.	250W	330W	330W	250W	250W
protection type	IP22	IP22	IP22	IP55	IP55
torque of inertia	80kgm <sup>2</sup>	100kgm <sup>2</sup>	100kgm <sup>2</sup>	150kgm <sup>2</sup>	150kgm <sup>2</sup>
mass of leaf:	450kg	600kg	600kg	450kg	450kg

Performance level "d"

Classification	type	type	
DIN 18650-1	1301	1301.FIRE	
	1301.S	1401.FIRE	
	1401		
Figure	Number		
1	1	1	swing door drive
2	3	3	1.000.000 cycles at 4000 cycles/day
3	1	1	Suitable for Swing door
4	0		Suitable for fire door
5	1	1	force limitation
	2	2	external saftey devices
	3	3	low-energy
6	0	0	no special requirements
7			depending to the leaf construction
8	2	2	-15°C to +50°C

This classification will be marked on the rating plate. On door drives the blank places need to be added after installation.