

A photograph of a server room with several server cages. The cages are constructed from metal frames and wire mesh. The lighting is dim, with a yellowish tint, and the floor is a light-colored tile. A curved white graphic element is overlaid on the image.

✓ **SERVER CAGES**

SECURE SOLUTIONS FROM
TROAX & LEE MANUFACTURING

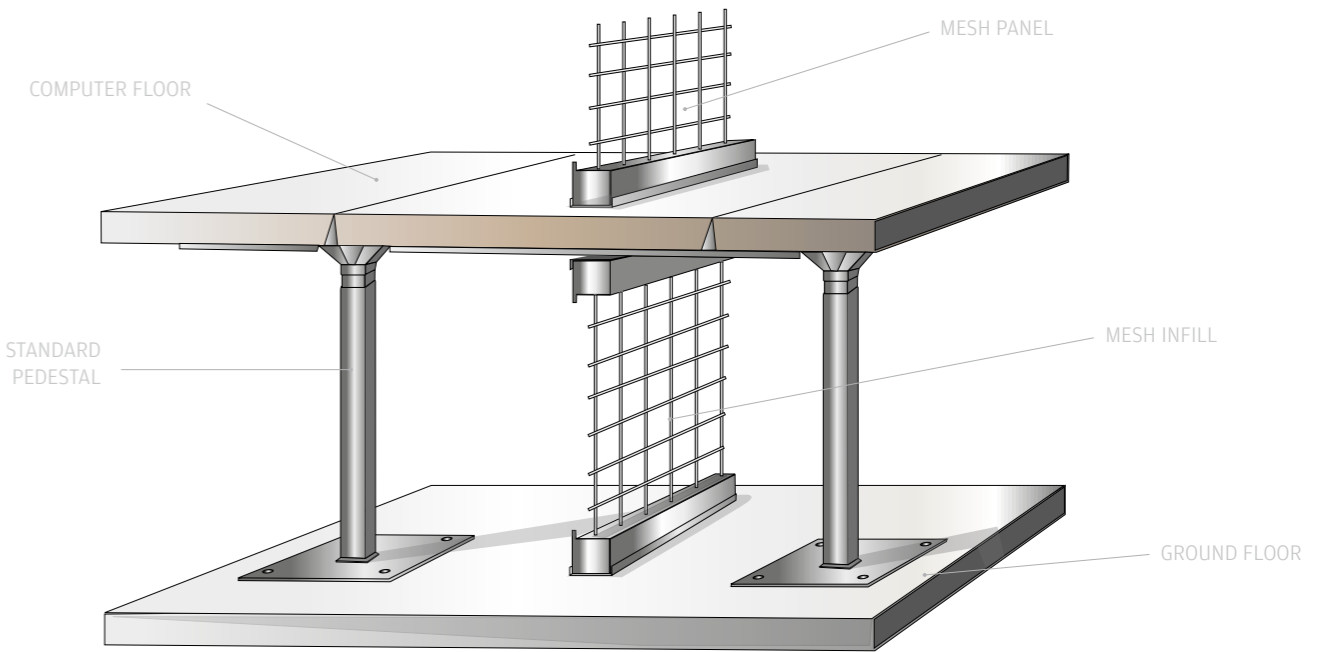
✓ *SKILL, QUALITY & EXPERIENCE*

www.troax.com



Caelum - All mesh modular option

Modular panels with or without roofs can be fitted to any height. Mesh panels allow full circulation of air flow. Panels can be trimmed to fit around existing services and obstructions.



A variety of solutions can be used to infill below a computer floor (illustrated above) and above a suspended ceiling.

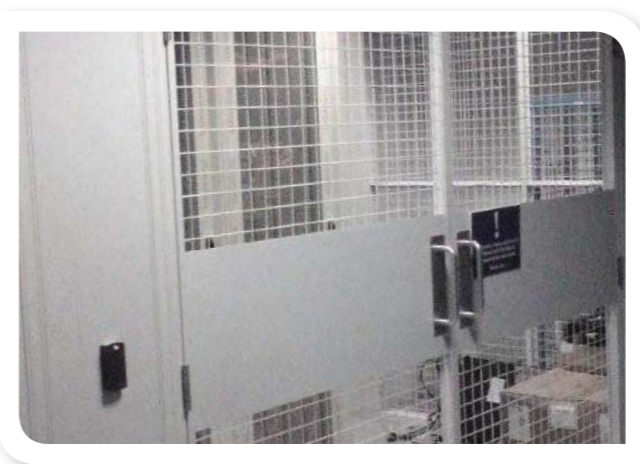
Sigma - Mesh and steel options.

Sigma panels can be used to provide a bespoke solution. Double skin panels can be used to mount electrical controls. All mesh, all steel or steel/mesh is available. Full steel panels offer greater privacy.



Locking options

Several locking options are available - padlock, cylinder, doors and/or adjacent panels can be supplied prepared to suit free issue lock hardware, mechanical, keypad or electric strike.





Technical information



Caelum - UX450

Mesh size:
50 x 50 mm
25 x 25 mm

Door options:
Hinged door
Sliding door

Lock options:
Available on request

Standard colours:
Powder coated
Grey RAL 7037

Panel Heights:
800 mm
2200 mm

Panel Widths:
200 mm
300 mm
700 mm
1000 mm
1200 mm
1500 mm

Frame dimensions:
30 x 20 x 1.25 mm

Wire dimensions:
3 x 3.75 mm

Sigma

Door options:
Single/double hinged door
Single/double sliding door

Lock options:
Available on request

Standard colours:
White RAL 9010
Sandstone BS 08 B17
Grey RAL 7037
Mid light Grey BS 00 A05
Blue RAL 5010

Panel combinations:
Panels are available
in any combination of
Full Steel, Steel/Mesh,
Full Mesh or Steel/Glass

Panel Heights:
2440 mm
2745 mm
3050 mm
3660 mm

Panel Widths:
300 mm
400 mm
500 mm
600 mm
700 mm
800 mm
900 mm
1000 mm

Other colours, corporate or standard colours are available on request.

