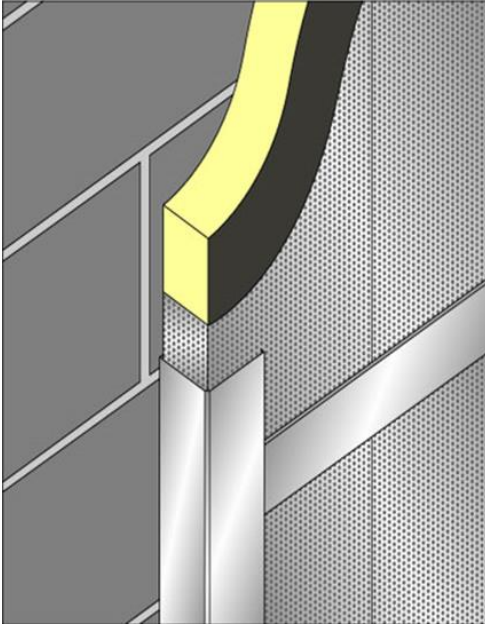


Introduction



Siderise WPM Acoustic Liner

Siderise WPM Impact resistant sound absorbing wall and ceiling lining system is a low cost fully protected sound absorbing panel lining system for walls and ceilings, offering many unique advantages.

The system comprises of three component parts: the panel unit, the retaining channel and the removable cover strip.

The panel unit consists of a cassette tray formed from perforated metal containing the sound absorbent core. The dense rockfibre core is of a special construction to provide improved impact resistance. As standard the core is faced on both surfaces with a non-woven glass fabric to provide anti-dusting

characteristics whilst remaining acoustically transparent. Alternative membranes or film enclosed options for special applications or external use are also available.

As standard all the metal components of the system are manufactured from galvanised mild steel. Versions based on stainless steel or aluminium are available to special order.

Special Benefits

- ✓ Simple to install
- ✓ Direct fix system
- ✓ Panels easily removed
- ✓ Good impact resistance
- ✓ Wide range of finishes and thickness
- ✓ Excellent acoustic performance

Applications

The standard system is ideally suited to a wide range of industrial applications requiring sound absorbing linings. These include: plant rooms, machine enclosures, general factory areas, test rigs, etc.

Versions of the system are available for various special applications these include: external linings, food & electronic process areas and wet or dirty areas. These systems normally incorporate film enclosed cores and consequently may be pressured washed.

The system can be provided in decorative forms, typically polyester powder coated to a specific RAL colour. Design options are further extended by the availability of special panel sizes & perforation patterns. Matching custom made finishing and edging trims are also available.

Acoustic Performance

Given the large number of available options offered by the Siderise WPM system we recommend you contact our technical section for detailed sound absorption data for the specific system under consideration.

The following indicative values relate to the Standard system direct mounted to concrete and exclude any specialist enclosing film.

Table 1. Performance

Material thickness	Absorption Coefficients					
	125 Hz	250 Hz	500 Hz	1000 Hz	2000 Hz	4000 Hz
50mm	0.20	0.70	0.90	0.90	0.90	0.85
75mm	0.40	0.80	0.90	0.90	0.90	0.85
100mm	0.60	0.85	0.90	0.90	0.90	0.85



External Application of Siderise WPM System



Photographs courtesy of Industrial Noise and Vibration Centre Limited



Internal Application of Siderise WPM System on Walls and Ceiling



Dimensions

WPM Panel Unit: 1200 x 600 x 50mm

Retaining Channel: 57/55/25mm x 2.5m long

Cover Strip: 7/45/7mm x 2.5m long

* Alternative thickness and sizes are available to order.

Fire Performance

BS 476, Part 7: Class 1.

BS 476, Part 6: $I < 12, I_{(1)} < 6$

From the above the product meets the requirements of Class 'O' to Building Regulations

Maintenance

The system readily allows for the subsequent removal of individual panels for maintenance or replacement purposes.

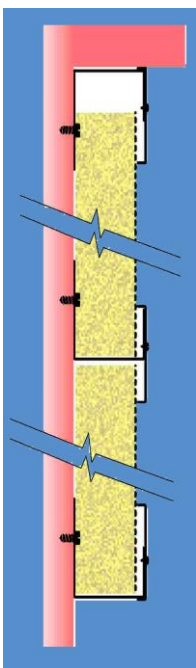
Periodic cleaning would normally consist of wiping the panel face with a slightly damp cloth or light vacuuming.

Installation

The following describes installation to a flat wall surface (ceiling installation is similar).

The main retaining channels are attached to the wall at 1205mm centres to form a series of horizontal trays. The top most channel is inverted and should be fitted to provide a 1180mm clear opening.

The Siderise WPM panels are fitted vertically between the channels and are close butted together. The panels are locked into position by the action of fitting the cover strip (see vertical section below).



The cover strips are attached to the retaining channels by means of self-tapping screws or blind rivets (if subsequent easy removal of the panels is not anticipated).

No vertical supports are required other than the use of the retaining channel and cover strip at corners or finishing points.

Typical detailing is available for most common installation conditions from our technical department.



Internal Application of Siderise WPM System with Polyester Powder Coated panels & cover strips

