

Seceuro Range CD38 Built On

Technical Specifications



www.hag.co.uk
Advice Line 0800 072 3444

Seceuro Range CD38 Built On



What is it made from

The Seceuro range offers an all Aluminium Construction

Typical Uses or Specific Use

Typical uses are from serving areas, Cabinets, Office windows and Domestic Properties.

Security Level

Medium to Low Security

Benefit of product range

The Seceuro Range provides a high level of aesthetics Can be installed where headroom is restricted

For further information about this product please call the HAG advice line on 0800 072 3444 or email info@hag.co.uk

Seceuro Range CD38 Built On



Product Overview

Description

Seceuro CD 38 Built On, CD38 is a double skin extruded aluminium non-vented slat.

Variations

Perforated, punched, glazed (Up To 3000mm wide) & Insurance approved options available.

Common use

Domestic / Commercial Windows, Doors, Surverys & Cabinets.

Maximum Width

4000mm

Dimensions

Nominally 38mm high x 9mm thick.

Weight

8kg per square metre.

Finish

White, brown or cream. Bottom slat - white, dark brown alternative standard RAL or BS colours at extra cost.



Shutter Box Specification

Construction

Roll formed aluminium in two sections; top and bottom boxes. Bottom box removable for installation and maintenance and Chamfered at 45°. The shutter box is assembled on die cast aluminium endplates.

Box sizes

Clear opening height (to underside of box):

1535mm, box size 165mm

1820mm, box size 180mm

2595mm, box size 205mm

Finish

White, dark brown. The CD38 Box can be powder coated to alternative standard RAL or BS colours at extra cost.

Guide Rail Specification

Construction

Ref - H30 Extruded aluminium with an integral box section for reinforcement and to facilitate fixing. High density 6mm pile brush seals for quiet and smooth operation. 60mm wide x 24mm deep

Finish

White, dark brown Standard RAL or BS colours at extra cost.

Security Features

Standard shutters lock automatically at the top when fully lowered. The bottom section of the shutter box is riveted after installation. The fixing screw heads are rendered unusable and are concealed behind cover caps. Optional 30 x 20 angle can be fixed on to the cill.

For further information about this product please call the HAG advice line on 0800 072 3444 or email info@hag.co.uk

Seceuro Range CD38 Built On



Operational Specification

Swivel Belt Winder

- for shutters up to 15kg

The swivel winder coils the belt when it is pulled to open the shutter. The belt is 14mm wide and grey in colour. External shutters are supplied with a guide tube to protect the belt through the building wall.

Geared Belt Winder

For shutters between 15kg and 25kg

1:3 ratio with removable handle for belt operated shutters.

Rod Crank Operation

For shutters up to 25kg

Incorporates a geared rod crank handle 1500mm long which hangs vertically and secures into a clip when not in use. The gear is installed in the box, the gear ratio varies with shutter weight

Spring Loaded

A counter balanced spring ensures controlled raising and Lowering with a key lock in-built at the bottom of the shutter for Security

Single Phase Electric

Provision of a 13 amp fused spur is required for installation.

A tubular motor within the barrel assembly with limit switches and the thermal cut out to prevent overheating.

Draw 240 volts and 0.5 - 2.5 amps dependant upon the shutter size

Control

Standard security keyswitch or rocker switch.

Other controls are available on request.

Override

A counter balanced spring ensures controlled raising and Lowering with a key lock in-built at the bottom of the shutter for Security

Product specification may change and it is advisable to consult with HAG technical advisors before specifying or ordering. HAG operates a policy of continuous improvement.

Visit our website for more information on HAG Roller Shutters www.hag.co.uk/roller-shutters.html

For further information about this product please call the HAG advice line on 0800 072 3444 or email info@hag.co.uk

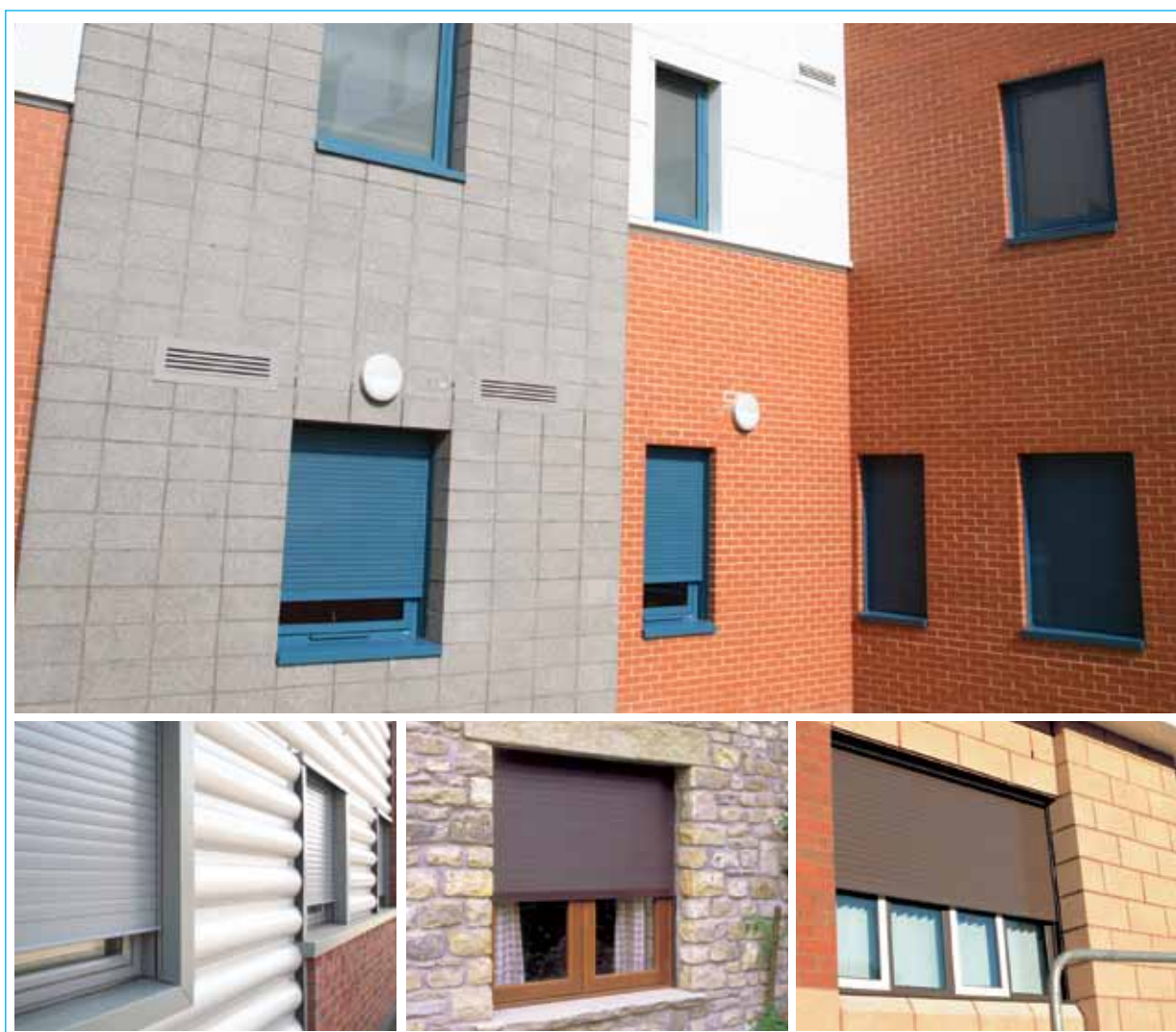
Seceuro Range CD38 Built In

Technical Specifications



www.hag.co.uk
Advice Line 0800 072 3444

Seceuro Range CD38 Built In



What is it made from

The Seceuro range offers an all Aluminium Construction

Typical Uses or Specific Use

Typical uses are from serving areas, Cabinets, Office windows and Domestic Properties.

Security Level

Medium to Low Security

Benefit of product range

The Seceuro Range provides a high level of aesthetics Can be installed where headroom is restricted

For further information about this product please call the HAG advice line on 0800 072 3444 or email info@hag.co.uk

Seceuro Range CD38 Built In



Product Overview

Description

Seceuro CD 38 Built In, CD38 is a double skin extruded aluminium non-vented slat.

Common use

For Window and Door Applications on new Build Projects.

Maximum Width

3000mm

Dimensions

Nominally 38mm high x 9mm thick.

Weight

8kg per square metre.

Finish

White, brown or cream. bottom slat - white, dark brown.



Shutter Box Specification

Construction

Honeycomb section PVC.

Removable vertical panel for installation and maintenance; tight clip getting to withstand draughts and moisture ingress. Drive mechanism mounted on metal inner plates for stability and easy access for maintenance.

Box sizes

Clear opening height (to underside of box):

1800mm, box size 200mm

2300mm, box size 225mm

3000mm, box size 295mm

Finish

White only.

Guide Rail Specification

Construction

Ref - H34 Extruded aluminium with an integral box section for reinforcement and to facilitate fixing. High density 6mm pile brush seals for quiet and smooth operation. 60mm wide x 40mm deep.

3000mm, box size 295mm

White, dark brown. The CD38 slats and guide rails can be powder coated to alternative standard RAL or BS colours at extra cost.

Seceuro Range CD38 Built In



Operational Specification

Rod Crank Operation

For shutters up to 25kg

Incorporates a geared rod crank handle 1500mm long which hangs vertically and secures into a clip when not in use. The gear is installed in the box, the gear ratio varies with shutter weight

Spring Loaded

A counter balanced spring ensures controlled raising and Lowering with a key lock in-built at the bottom of the shutter for Security.

Single Phase Electric

Provision of a 13 amp fused spur is required for installation.

A tubular motor within the barrel assembly with limit switches and the thermal cut out to prevent overheating.

Draw 240 volts and 0.5 - 2.5 amps dependant upon the shutter size

Control

Standard security keyswitch or rocker switch. Other controls are available on request.

Override

A Manual override should be priced and ordered separately for Shutters which are to be installed on exit doorways to permit Operation in the event of a power failure. This is usually only Operable from only one side.

Product specification may change and it is advisable to consult with HAG technical advisors before specifying or ordering. HAG operates a policy of continuous improvement.

Visit our website for more information on HAG Roller Shutters www.hag.co.uk/roller-shutters.html

For further information about this product please call the HAG advice line on 0800 072 3444 or email info@hag.co.uk

Seceuro Range CD60 Built On

Technical Specifications



www.hag.co.uk
Advice Line 0800 072 3444

Seceuro Range CD60 Built On



What is it made from

The Seceuro range offers an all Aluminium Construction

Typical Uses or Specific Use

Typical uses are from serving areas, Cabinets, Office windows and Domestic Properties.

Security Level

Medium to Low Security

Benefit of product range

The Seceuro Range provides a high level of aesthetics Can be installed where headroom is restricted

For further information about this product please call the HAG advice line on 0800 072 3444 or email info@hag.co.uk

Seceuro Range CD60 Built On



Product Overview

Description

Seceuro CD60 Built On, CD60 is a double skin extruded aluminium non-vented slat.

Common use

Commercial Windows and Shop fronts

Maximum Width

6000mm

Dimensions

Nominally 55mm high x 14mm thick.

Weight

9kg per square metre.

Finish

White, brown. Bottom slat - white, dark brown alternative standard RAL or BS colours at extra cost.



Shutter Box Specification

Construction

Roll formed aluminium in two sections; top and bottom boxes.
Bottom box removable for installation and maintenance and chamfered at 45°.
The shutter box is assembled on die cast aluminium endplates.

Box sizes

Clear opening height (to underside of box):
1595mm, box size 205mm
2750mm, box size 250mm
2900mm, box size 300mm

Finish

White, dark brown alternative standard RAL or BS colours at extra cost.

Guide Rail Specification

Construction

Standard guide rails: 60mm x 29mm x 3mm - 75mm x 29mm x 3mm dependant on width and height.
Both with high density pile 4mm brush seals.

Finish

White, dark brown alternative standard RAL or BS colours at extra cost.

Seceuro Range CD60 Built On



Operational Specification

Spring Loaded

A counter balanced spring ensures controlled raising and Lowering with a key lock in-built at the bottom of the shutter for Security.

Single Phase Electric

Provision of a 13 amp fused spur is required for installation.

A tubular motor within the barrel assembly with limit switches and the thermal cut out to prevent overheating.

Draw 240 volts and 0.5 - 2.5 amps dependant upon the shutter size

Control

Standard security keyswitch or rocker switch. Other controls are available on request.

Override

A Manual override should be priced and ordered separately for Shutters which are to be installed on exit doorways to permit Operation in the event of a power failure. This is usually only Operable from only one side.

Product specification may change and it is advisable to consult with HAG technical advisors before specifying or ordering. HAG operates a policy of continuous improvement.

Visit our website for more information on HAG Roller Shutters www.hag.co.uk/roller-shutters.html

For further information about this product please call the HAG advice line on 0800 072 3444 or email info@hag.co.uk

Seceuro Range CD77 Built On

Technical Specifications



www.hag.co.uk
Advice Line 0800 072 3444

Seceuro Range CD77 Built On



What is it made from

The Seceuro range offers an all Aluminium Construction

Typical Uses or Specific Use

Typical uses are from serving areas, Cabinets, Office windows and Domestic Properties.

Security Level

Medium to Low Security

Benefit of product range

The Seceuro Range provides a high level of aesthetics Can be installed where headroom is restricted

For further information about this product please call the HAG advice line on 0800 072 3444 or email info@hag.co.uk

Seceuro Range CD77 Built On



Product Overview

Description

Seceuro CD77 Built On, CD77 is a double skin foam filled aluminium non-vented slat. The CD77 slat can be mixed with the CD78 vision panel slat that has apertures of 80mm x 35mm with a polycarbonate insert to offer a partial vision section to the shutter.

Common use

Domestic window shutters/garage doors, medium security commercial and office applications.

Maximum Width

5400mm

Dimensions

Nominally 77mm high x 19mm thick..

Weight

5kg per square metre.

Finish

White, brown or light beige.

Bottom slat - white, dark brown. Other colours available on request.



Shutter Box Specification

Construction

Roll formed aluminium in two sections; top and bottom boxes. Bottom box removable for installation and maintenance and Chamfered at 45°. The shutter box is assembled on die cast aluminium endplates.

Box sizes

Clear opening height (to underside of box):

1550mm, box size 250mm

2600mm, box size 300mm

Finish

White, dark brown, Standard RAL or BS colours at extra cost.

Guide Rail Specification

Construction

90mm wide x 34mm With High density 4mm pile brush seals for quiet and smooth operation

Finish

White, dark brown, Standard RAL or BS colours at extra cost.

Acoustics

(Insulation 2.8 watts per m² Kelvin w/m²k)

Decibel reduction at 500HZ = 18

Decibel reduction at 1000MHZ = 2

For further information about this product please call the HAG advice line on 0800 072 3444 or email info@hag.co.uk

Seceuro Range CD77 Built On



Operational Specification

Spring Loaded

A counter balanced spring ensures controlled raising and Lowering with a key lock in-built at the bottom of the shutter for Security.

Single Phase Electric

Provision of a 13 amp fused spur is required for installation.

A tubular motor within the barrel assembly with limit switches and the thermal cut out to prevent overheating.

Draw 240 volts and 0.5 - 2.5 amps dependant upon the shutter size

Control

Standard security keyswitch or rocker switch. Other controls are available on request.

Override

A Manual override should be priced and ordered separately for Shutters which are to be installed on exit doorways to permit Operation in the event of a power failure. This is usually only Operable from only one side.

Product specification may change and it is advisable to consult with HAG technical advisors before specifying or ordering. HAG operates a policy of continuous improvement.

Visit our website for more information on HAG Roller Shutters www.hag.co.uk/roller-shutters.html

For further information about this product please call the HAG advice line on 0800 072 3444 or email info@hag.co.uk

Seceuro Range CD150 Built On

Technical Specifications



www.hag.co.uk
Advice Line 0800 072 3444

Seceuro Range CD150 Built On



What is it made from

The Seceuro range offers an all Aluminium Construction

Typical Uses or Specific Use

Typical uses are from serving areas, Cabinets, Office windows and Domestic Properties.

Security Level

Medium to Low Security

Benefit of product range

The Seceuro Range provides a high level of aesthetics Can be installed where headroom is restricted

For further information about this product please call the HAG advice line on 0800 072 3444 or email info@hag.co.uk

Seceuro Range CD150 Built On



Product Overview

Description

Seceuro CD150 Built On, Double skin foam filled aluminium slat, vented as standard but also available non-vented.

Common use

Domestic / Commercial Windows, Doors, Surverys & Cabinets.

Maximum Width

3400mm

Dimensions

Nominally 40mm high x 9mm thick.

Weight

4.5kg per square metre.

Finish

White, brown, cream or wood grain effect, Bottom slat - white, dark brown.



Shutter Box Specification

Construction

Roll formed aluminium in two sections; top and bottom boxes.
Bottom box removable for installation and maintenance and Chamfered at 45°.
The shutter box is assembled on die cast aluminium endplates.

Box sizes

Clear opening height (to underside of box):

1600mm, box size 165mm

2000mm, box size 180mm

2800mm, box size 205mm

Finish

White, dark brown.

The CD150 box can be powder coated to alternative standard RAL or BS colours at an extra cost.

Guide Rail Specification

Construction

Ref - H25 Extruded aluminium with an integral box section for reinforcement and to facilitate fixing. High density 6mm pile brush seals for quiet and smooth operation. 53mm wide x 25mm deep.

Finish

3000mm, box size 295mm

White, dark brown, can be powder coated to alternative standard RAL or BS colours at an extra cost.

For further information about this product please call the HAG advice line on 0800 072 3444 or email info@hag.co.uk

Seceuro Range CD150 Built On



Operational Specification

Rod Crank Operation

For shutters up to 25kg

Incorporates a geared rod crank handle 1500mm long which hangs vertically and secures into a clip when not in use. The gear is installed in the box, the gear ratio varies with shutter weight.

Spring Loaded

A counter balanced spring ensures controlled raising and Lowering with a key lock in-built at the bottom of the shutter for Security.

Swivel Belt Winder

For shutters up to 15kg

The swivel winder coils the belt when it is pulled to open the shutter.

The belt is 14mm wide and grey in colour. External shutters are supplied with a guide tube to protect the belt through the building wall.

Geared Belt Winder

For shutters between 15kg and 25kg

1:3 ratio with removable handle for belt operated shutters.

Single Phase Electric

Provision of a 13 amp fused spur is required for installation.

A tubular motor within the barrel assembly with limit switches and the thermal cut out to prevent overheating. Draw 240 volts and 0.5 - 2.5 amps dependant upon the shutter size

Control

Standard security keyswitch or rocker switch. Other controls are available on request.

Override

A Manual override should be priced and ordered separately for Shutters which are to be installed on exit doorways to permit Operation in the event of a power failure. This is usually only Operable from only one side.

Product specification may change and it is advisable to consult with HAG technical advisors before specifying or ordering. HAG operates a policy of continuous improvement.

Visit our website for more information on HAG Roller Shutters www.hag.co.uk/roller-shutters.html

For further information about this product please call the HAG advice line on 0800 072 3444 or email info@hag.co.uk

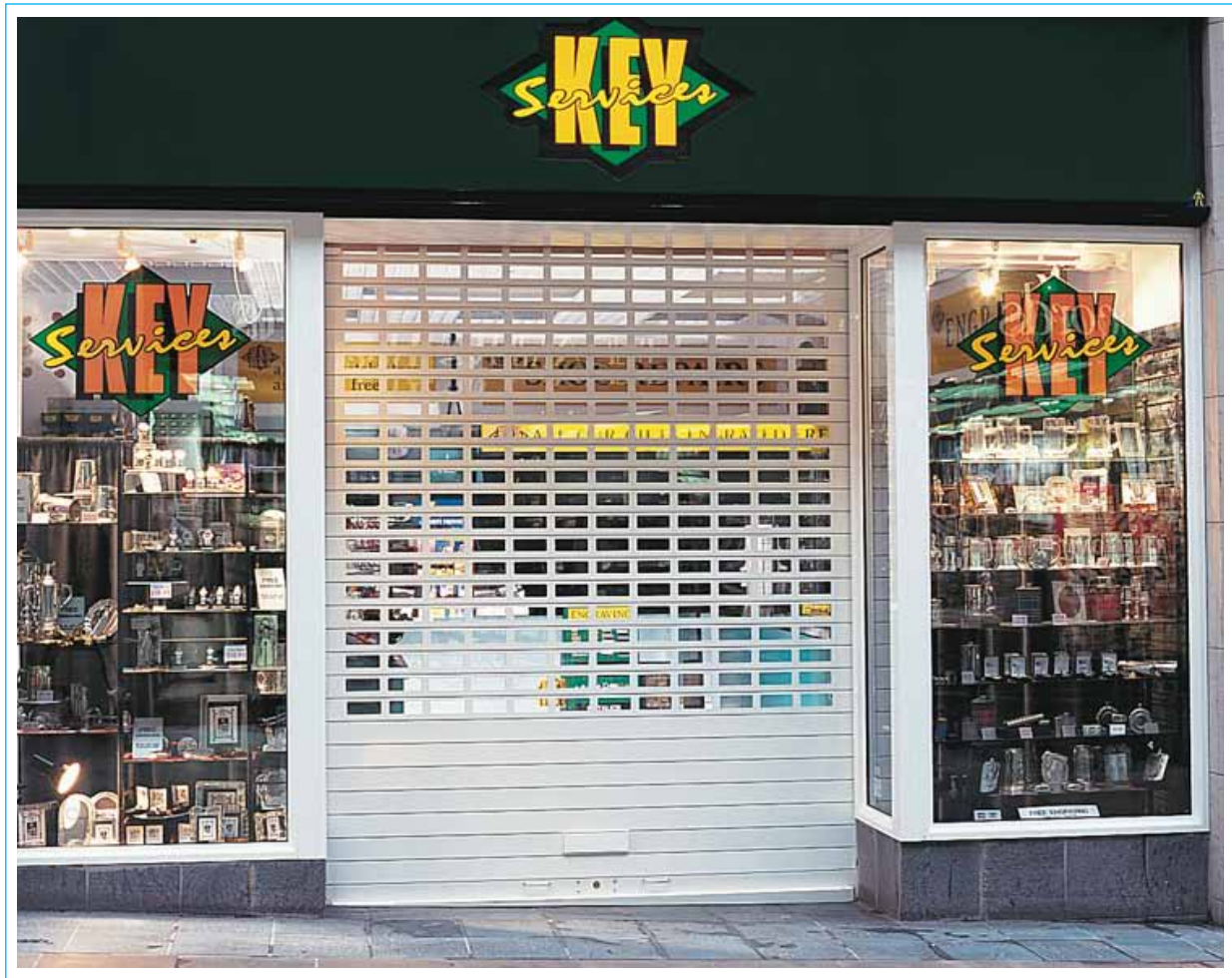
Seceuro Range CD800 Built On

Technical Specifications



www.hag.co.uk
Advice Line 0800 072 3444

Seceuro Range CD800 Built On



What is it made from

The Seceuro range offers an all Aluminium Construction

Typical Uses or Specific Use

Typical uses are from serving areas, Cabinets, Office windows and Domestic Properties.

Security Level

Medium to Low Security

Benefit of product range

The Seceuro Range provides a high level of aesthetics Can be installed where headroom is restricted

For further information about this product please call the HAG advice line on 0800 072 3444 or email info@hag.co.uk

Seceuro Range CD800 Built On



Product Overview

Description

Seceuro CD800 Built On, CD800 is a Single skin extruded aluminium slat, with a polycarbonate insert to offer a partial vision section to the shutter when required.

Common use

A specialised security shutter designed for retail premises. Delivers see-through protection demanded by many local authorities for established high streets and modern shopping centre



Maximum Width

6000mm

Dimensions

Nominally 77mm high x 1.8mm thick. Vision panel provides 65% vision. (150mm x 55mm aperture)

Weight

Optional glazing of 2mm polycarbonate.
9.25kg per square metre. (Without vision)
7.75Kg per square metre. (Vision and glazed)
75 x 70mm spacing 8kg per square metre

Finish

White, brown, alternative standard RAL or BS colours at an extra cost.

Shutter Box Specification

Construction

Roll formed aluminium in two sections; top and bottom boxes.
Bottom box removable for installation and maintenance and Chamfered at 45°.
The shutter box is assembled on die cast aluminium endplates.

Box sizes

Clear opening height (to underside of box):
1500mm, box size 250mm
2900mm, box size 300mm

Finish

White, dark brown. Alternative standard RAL or BS colours at an extra cost.

Guide Rail Specification

Construction

90mm wide x 34mm deep (UPH 250). With High density 4mm pile brush seals for quiet and smooth operation.

Finish

White, dark brown, alternative standard RAL or BS colours at an extra cost

For further information about this product please call the HAG advice line on 0800 072 3444 or email info@hag.co.uk

Seceuro Range CD800 Built On



Operational Specification

Spring Loaded

A counter balanced spring ensures controlled raising and Lowering with a key lock in-built at the bottom of the shutter for Security.

Single Phase Electric

Provision of a 13 amp fused spur is required for installation.

A tubular motor within the barrel assembly with limit switches and the thermal cut out to prevent overheating. Draw 240 volts and 0.5 - 2.5 amps dependant upon the shutter size

Control

Standard security keyswitch or rocker switch. Other controls are available on request.

Override

A Manual override should be priced and ordered separately for Shutters which are to be installed on exit doorways to permit Operation in the event of a power failure. This is usually only Operable from only one side.

Product specification may change and it is advisable to consult with HAG technical advisors before specifying or ordering. HAG operates a policy of continuous improvement.

Visit our website for more information on HAG Roller Shutters www.hag.co.uk/roller-shutters.html

For further information about this product please call the HAG advice line on 0800 072 3444 or email info@hag.co.uk

Seceuro Range CD900 Built On

Technical Specifications



www.hag.co.uk
Advice Line 0800 072 3444

Seceuro Range CD900 Built On



What is it made from

The Seceuro range offers an all Aluminium Construction

Typical Uses or Specific Use

Typical uses are from serving areas, Cabinets, Office windows and Domestic Properties.

Security Level

Medium to Low Security

Benefit of product range

The Seceuro Range provides a high level of aesthetics Can be installed where headroom is restricted

For further information about this product please call the HAG advice line on 0800 072 3444 or email info@hag.co.uk

Seceuro Range CD900 Built On



Product Overview

Description

Seceuro CD900 Built On, CD900 is an open grille constructed of extruded aluminium bars and links.

Common use

Internal shopfronts, kiosks, bars and serveries Where vision is required

Maximum Width

5000mm

Dimensions

150mm x 70mm Apertures.

Weight

150mm x 70mm spacing 7kg per square metre

75mm x 70mm spacing 8kg per square metre

75 x 70mm spacing 8kg per square metre

Finish

Satin silver anodised as standard.

Powder coated to standard RAL or BS colours at an extra cost

Regular or brick bond pattern. Solid slats can be included at extra cost for visual effect or extra strength.

Certain logos and designs can be incorporated in the construction of the grille



Shutter Box Specification

Construction

Roll formed aluminium in two sections; top and bottom boxes.

Bottom box removable for installation and maintenance and Chamfered at 45°.

The shutter box is assembled on die cast aluminium endplates.

Box sizes

Clear opening height (to underside of box):

1400mm, box size 205mm

2550mm, box size 250mm

3700mm, box size 300mm

Finish

White, dark brown, Alternative standard RAL or BS colours at an extra cost.

Guide Rail Specification

Construction

60mm x 29mm x 3mm - 90mm x 34mm x 3mm dependant on width and height.

Both with high density 4mm - 7mm pile brush seals.

Finish

White, dark brown, Alternative standard RAL or BS colours at an extra cost.

For further information about this product please call the HAG advice line on 0800 072 3444 or email info@hag.co.uk

Seceuro Range CD900 Built On



Operational Specification

Spring Loaded

A counter balanced spring ensures controlled raising and Lowering with a key lock in-built at the bottom of the shutter for Security.

Single Phase Electric

Provision of a 13 amp fused spur is required for installation.

A tubular motor within the barrel assembly with limit switches and the thermal cut out to prevent overheating.

Draw 240 volts and 0.5 - 2.5 amps dependant upon the shutter size

Control

Standard security keyswitch or rocker switch. Other controls are available on request.

Override

A Manual override should be priced and ordered separately for Shutters which are to be installed on exit doorways to permit Operation in the event of a power failure. This is usually only Operable from only one side.

Product specification may change and it is advisable to consult with HAG technical advisors before specifying or ordering. HAG operates a policy of continuous improvement.

Visit our website for more information on HAG Roller Shutters www.hag.co.uk/roller-shutters.html

For further information about this product please call the HAG advice line on 0800 072 3444 or email info@hag.co.uk
