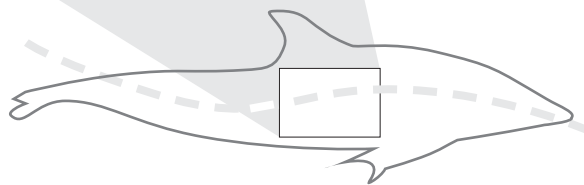




DOLPHIN  
ELEMENTS



### THE ELEMENTS PATTERN



### LONG BEAKED COMMON DOLPHIN

They generally prefer shallow, tropical, subtropical and warmer temperate waters closer to the coast. They are capable of diving to at least 900 ft (280 m) and holding their breath for up to 8 minutes to feed on prey. They are usually found in large social groups averaging from 100-500 animals. This species can be identified by its distinct bright contrasting coloration patterns.



The Dolphin Elements range is proof that you can have the best of both worlds: elegance and economy; a seriously good-looking family of stainless steel washroom dispensers and accessories for those with sky-high standards but a rather lower budget.

There's plenty of choice within the Elements range, including surface-mounted, counter-mounted, recessed and behind-mirror options. And if you can't find exactly what you need to make your washroom vision a reality, we can even offer bespoke manufacture.

In addition to high quality 304 stainless steel, some Dolphin Elements products are also available in chrome plated solid brass. Either way, outstanding durability comes as standard.

It's good to know, too, that most items in the range are 100% recyclable.

**CASE STUDY** 2

**COLLECTION** 4

---

**PRODUCT CATEGORIES**

SOAP DISPENSERS	8	HAIR DRYERS	28
PAPER TOWEL DISPENSERS	15	ACCESSORIES	30
TOILET TISSUE DISPENSERS	17	COMBINATION UNITS	33
BINS	22	CONSUMABLES	35
TOILET BRUSHES	26		



FOR FULL TECHNICAL DETAILS SEE [DOLPHINSOLUTIONS.CO.UK](http://DOLPHINSOLUTIONS.CO.UK)

## CASE STUDY

### THE CO-OP HEADQUARTERS MANCHESTER

Designed to the very highest standards, with the latest design innovation and environmental features, the Co-op's new HQ brought together all of their 3,000 head office based employees into one high quality, open plan building.

The sleek, ergonomic style of the new headquarters needed to be carried through to every facet of the building, including the washrooms.

High quality stainless steel fittings, behind mirror soap and paper towel dispensers and sleek, small projection, high speed hand dryers were used to help enhance the clean, contemporary feeling that runs throughout the building and help make the washrooms a feature of these impressive headquarters. For such a prestigious head office, functionality was as important as style so the design, and the products, needed to be easy to use, durable and live up to the expectations of the employees.



FEATURED PRODUCTS



BC5491BM



BC2006



DB1900



BC270-1



BC921



# THE SCHOOLS COLLECTION



---

## FEATURED PRODUCTS



BC945



BC2002



BC980



BC928



BC723



**COLLECTION CURATED BY**  
JONATHAN BEATTIE

These items fit well together when considering the on-going costs of bursars running a school budget.

Sensor taps to reduce water waste, highly efficient hand dryers to ensure those electricity bills are kept to a minimum and a no-waste toilet roll holder are amongst those that we would recommend.



BC360







FEATURED PRODUCTS



BC928



BC360



## SOAP DISPENSERS



**BC360** DOLPHIN STAINLESS STEEL DISPENSER

**207 MM** HEIGHT  
**60 MM** DIAMETER  
**82 MM** PROJECTION

- > 250ml Refillable Soap Dispenser
- > Quality satin stainless steel
- > Wall mounted
- > Concealed fixing
- > Contemporary design
- > Uses standard liquid hand soap and anti bacterial soap only
- > **BC360** Satin stainless steel finish
- > **BC360B** Polished stainless steel finish



**BC613** DOLPHIN STAINLESS STEEL SOAP DISPENSER

**172 MM** HEIGHT  
**76.5 MM** WIDTH  
**110 MM** PROJECTION

- > Quality satin finish
- > Robust polished stainless steel construction with secure wall mountings
- > Bulk-fill dispenser
- > Ideal for front of house applications
- > Uses standard liquid hand soap and anti bacterial soap
- > Capacity 400ml
- > **BC613** Satin stainless steel finish
- > **BC613B** Polished stainless steel finish



**BC923 DOLPHIN STAINLESS STEEL VERTICAL SOAP DISPENSER**

**206 MM HEIGHT**  
**121 MM WIDTH**  
**72 MM PROJECTION**

- > Quality satin stainless steel construction
- > Bulk fill – 1200ml capacity
- > Lockable
- > Projection to soap spout is 110mm
- > Uses standard liquid hand soap and most anti bacterial soaps
- > **BC923** Satin stainless steel finish
- > **BC923B** Polished stainless steel finish
- > **BC923WM** White metal finish



**BC913 DOLPHIN SATIN STAINLESS STEEL HORIZONTAL SOAP DISPENSER**

**121 MM HEIGHT**  
**206 MM WIDTH**  
**72 MM PROJECTION**

- > Lockable, quality stainless steel construction
- > Bulk fill – 1200ml capacity
- > Ideal for confined spaces, for example: between basin and mirror
- > Uses standard liquid hand soap and most anti bacterial soaps
- > **BC913** Satin stainless steel finish
- > **BC913B** Polished stainless steel finish
- > **BC913WM** White metal finish



**BC713 DOLPHIN STAINLESS STEEL SOAP DISPENSER**

**158 MM HEIGHT**  
**178 MM WIDTH**  
**67 MM PROJECTION**

- > Lockable stylish satin stainless steel soap dispenser
- > Non-drip, one-shot action
- > Durable, high quality stainless steel
- > Bulk fill 1200ml
- > Concealed fixing
- > Uses Standard Liquid Hand Soap And Most Anti Bacterial Soaps



**BC823 DOLPHIN SURFACE MOUNTED SOAP DISPENSER**

**293 MM HEIGHT**  
**100 MM WIDTH**  
**121 MM PROJECTION**

- > Robust 304 grade satin stainless steel back plate and front
- > Vandal resistant metal keyed locking mechanism
- > Unique and robust inner plastic soap tank and pump assembly that resists corrosion
- > 1000ml capacity refillable dispenser
- > Uses standard liquid hand soap, anti bacterial soap and alcohol hand sanitiser (max 70% alcohol content) – this is the only surface mounted soap dispenser that we advertise will take alcohol hand sanitisers!
- > **BC823** Satin stainless steel finish
- > **BC823PS** Polished stainless steel finish
- > **BC823WM** White metal finish



**BC362-1 DOLPHIN STAINLESS STEEL SOAP BOTTLE HOLDER**

**147 MM HEIGHT**  
**62 MM WIDTH**  
**62 MM PROJECTION**

- > High quality satin stainless steel
- > For secure wall mounting
- > Slim line locks
- > Accepts 300ml soap/lotion bottle
- > Easy to use hinged lockable covers
- > Bottle included



**BC362-2 DOLPHIN STAINLESS STEEL SOAP BOTTLE HOLDER**

**146 MM HEIGHT**  
**134 MM WIDTH**  
**63 MM PROJECTION**

- > High quality satin stainless steel
- > For secure wall mounting
- > Slim line locks
- > Accepts 2 x 300ml soap/lotion bottles
- > Easy to use hinged lockable covers
- > Bottles included



**BC950 DOLPHIN INFRARED AUTOMATIC HANDS FREE SOAP DISPENSER**

**265 MM HEIGHT**  
**110 MM WIDTH**  
**115 MM PROJECTION**

- > Lockable quality stainless steel construction
- > Bulkfill – 950ml capacity
- > Automatic touch free dispensing – ultra hygienic
- > Requires 3 x 1.5V C batteries for estimated 10,000 shots
- > Must be fitted at least 300mm above basin
- > Uses standard liquid hand soap, anti bacterial soap and alcohol hand sanitiser (max 70% alcohol content)



**BC950F DOLPHIN INFRARED AUTOMATIC HANDS FREE FOAMING SOAP DISPENSER**

**267 MM HEIGHT**  
**108 MM WIDTH**  
**107 MM PROJECTION**

- > Lockable quality stainless steel construction
- > Automatic touch free foaming soap dispenser – ultra hygienic
- > Very economical cost in use – uses as little as 0.6ml of soap per cycle – less than half most traditional liquid soap dispensers
- > Requires 4 x 1.5V C batteries for estimated 25,000 shots
- > Must be fitted at least 300mm above basin
- > Uses foaming soap only





**BC924 DOLPHIN SAINLESS STEEL SOAP DISPENSER**

**265 MM HEIGHT**  
**100 MM WIDTH**  
**95 MM PROJECTION**

- > Quality stainless steel
- > Very durable – ideal for schools etc
- > Lockable
- > Non drip, push action pump
- > Capacity 1000ml, Bulk fill
- > Uses standard liquid hand soap and anti bacterial soap
- > **BC924SS** Satin stainless steel finish
- > **BC924PS** Polished stainless steel finish
- > **BC924WM** White metal finish



**BC9416 DOLPHIN STAINLESS STEEL SOAP DISPENSER**

**180 MM HEIGHT**  
**90 MM DIAMETER**

- > Quality stainless steel construction
- > Bulk fill – 350ml capacity
- > Ideal for front of house applications
- > Uses standard liquid hand soap and anti bacterial soap



**BC624-2 DOLPHIN SOAP DISPENSER**

**180 MM HEIGHT**  
**185 MM WIDTH**  
**85 MM PROJECTION**

- > Push button convenience
- > Wall Mounted shower dispenser
- > Pump pre-measures correct amount each time
- > Lockable version is available at an extra cost
- > Capacity: 2 x 300ml
- > Installed in minutes without tools. Adheres to wall with two way silicone tape (included)
- > Available in Chrome, Satin and White
- > **BC624-1** Single dispenser
- > **BC624-2** Double dispenser
- > **BC624-3** Triple dispenser



**BC500 DOLPHIN STAINLESS STEEL SOAP DISPENSER**

**255 MM HEIGHT**  
**125 MM WIDTH**  
**120 MM PROJECTION**

- > Lockable non drip, one shot action soap dispenser
- > Durable, High quality stainless steel
- > Ideal for busy washrooms
- > Refillable
- > Supplied with plastic container for bulk filling
- > Capacity 800ml
- > Uses standard liquid hand soap, anti bacterial soap and alcohol hand sanitiser (max 70% alcohol content)



**BC410 DOLPHIN STAINLESS STEEL FOAM SOAP DISPENSER**

**255 MM HEIGHT**  
**132 MM WIDTH**  
**120 MM PROJECTION**

- > Stylish Stainless Steel design soap dispenser
- > Very economical soap usage
- > Uses a quality 800ml soap cartridge
- > Soap pump included in each cartridge, promoting hygiene
- > Foam soap cartridge: **BC400A** Dolphin Soap
- > Hygienic plastic push bar



**BC633FC DOLPHIN SOAP DISPENSER**

**104 MM HEIGHT**  
**38 MM WIDTH**  
**63 MM PROJECTION**

- > Electronic foam soap dispenser activated by an infrared sensor.
- > A big improvement in soap dispenser foaming soap drastically reduces soap consumption when compared to standard liquid soap
- > Integral peristaltic pump prevent backflow ensuring a germ free environment and, in conjunction with the touch free operation, eliminates the risks of contamination
- > Counter mounted it includes a 1 litre foam soap bottle, integral bottle support and fixing kit
- > Designed to match our **DB100**, **DB200** and **DB1000** series taps
- > **BC633FC** Polished chrome finish
- > **BC633FS** Satin brushed finish



**BC630 DOLPHIN COUNTER MOUNTED SOAP DISPENSER**

**75 MM HEIGHT**  
**103 MM WIDTH**  
**103 MM PROJECTION**

- > Solid brass construction throughout giving very long service life in the most demanding high use areas such as airports and public buildings
- > Prestigious and stylish designed to match our tap range
- > Dispenser unlocks from its counter mounting for easy top filling
- > Supplied with 1 litre bottle that mounts directly under the dispenser
- > Can be very simply adapted to use with a multifeed system (max tube length recommended 2m)
- > Uses standard liquid hand soap and anti bacterial soap
- > **BC630** Satin stainless steel finish
- > **BC630B** Polished stainless steel finish



**BC628 DOLPHIN VANITY TOP SOAP DISPENSER**

**60 MM HEIGHT ABOVE COUNTER**  
**250 MM HEIGHT BELOW COUNTER**

- > Quality non-drip pump non rotating soap dispenser
- > Mounted through countertop or basin for the ultimate prestigious washroom. Hole Ø in counter: 25mm
- > Convenient counter top filling with lockable, robust polished chrome plated brass body
- > Supplied complete with 1,000ml bottle
- > Please note – not suitable for use with a multifeed system
- > Uses standard liquid hand soap and anti bacterial soap
- > **BC628-2.5** with 63mm projection
- > **BC628-4** with 100mm projection
- > **BC628-6** with 150mm projection



**BC628SS DOLPHIN COUNTER MOUNTED SOAP DISPENSER**

**60 MM HEIGHT ABOVE COUNTER**  
**250 MM HEIGHT BELOW COUNTER**

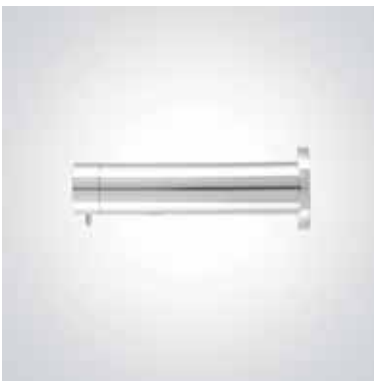
- > Quality non-drip pump non rotating soap dispenser
- > Mounted through countertop or basin for the ultimate prestigious washroom
- > Robust polished chrome plated brass body
- > Supplied complete with 1,000ml bottle
- > Please note – not suitable for use with a multifeed system
- > Uses standard liquid hand soap and anti bacterial soap
- > **BC628SS-4** 100mm projection
- > **BC628SS-6** 153mm projection



**BC629 DOLPHIN VANITY TOP SOAP DISPENSER**

**60 MM HEIGHT ABOVE COUNTER**  
**115 MM HEIGHT BELOW COUNTER**  
**96 MM PROJECTION**

- > Mounted through countertop or basin for the ultimate prestigious washroom
- > Robust polished chrome plated brass body
- > Lockable
- > Bottle can only be refilled from below counter
- > Supplied complete with 1,000ml bottle
- > Rotates through 360°
- > Please note – not suitable for use with a multifeed system
- > Uses standard liquid hand soap and anti bacterial soap



**BC632FC DOLPHIN PANEL MOUNTED INFRARED SOAP DISPENSER**

**44 MM DIAMETER**  
**123 MM PROJECTION**

- > Electronic foam soap dispenser activated by an infrared sensor.
- > A big improvement in soap dispensing foaming soap drastically reduces soap consumption when compared to standard liquid soap
- > Panel mounted it includes a 1 litre foam soap bottle, integral bottle support and fixing kit
- > Designed to match Dolphin Blue **DB400** and **DBL400** series taps
- > 2 year guarantee
- > **BC632FC** Polished chrome finish – foam soap
- > **BC632FS** Satin chrome finish – foam soap
- > **BC632C** Polished chrome finish – liquid soap
- > **BC632S** Satin chrome finish – liquid soap



**BC635C DOLPHIN TOUCH FREE SOAP DISPENSER**

**28 MM DIAMETER**  
**126 MM PROJECTION**

- > Touch free electronic soap dispenser for wall mounted installations. Activated by infrared sensor. Chrome plated body, other finishes available. The version for batteries features a low battery indicator. Includes a 1 litre soap bottle and bottle support. Optional for remote installation: extension cable and longer piping
- > Closing automatically without dripping, Dolphin's touch free soap dispenser helps to ensure that the bathroom will stay organised and neat
- > The following functions can be performed by remote control: Soap quantity selection, Refill the soap tank, temporary off, coming back to factory settings.
- > Draws maximum current of 0.5A at sensor activation
- > Complements electronic tap, **DB1500** / **DB1525**



**BC194 DOLPHIN PANEL MOUNTED SOAP DISPENSER**

**29 MM DIAMETER**  
**127 MM PROJECTION**

- > Superior quality and timeless design for prestigious washrooms
- > Designed for heavy traffic prestigious environments
- > Supplied with 2m of flexible feed tube – designed to feed from any non pressurised soap container provided by others
- > Where several dispensers are installed together our multi-feed system is recommended: **BC1900MA** and **BC1900MB**
- > Not suitable for pressurised soap systems (including gravity fed)
- > **BC194** Satin stainless steel finish
- > **BC194B** Polished stainless steel finish



**BC195 DOLPHIN PANEL MOUNTED SOAP DISPENSER**

**29 MM DIAMETER**  
**165 MM PROJECTION**

- > Superior quality and timeless design for prestigious washrooms
- > Designed for heavy traffic prestigious environments
- > Supplied with 2m of flexible feed tube – designed to feed from any non pressurised soap container provided by others
- > Where several dispensers are installed together our multi-feed system is recommended: **BC1900MA** and **BC1900MB**
- > Not suitable for pressurised soap systems (including gravity fed)
- > **BC195** Satin stainless steel finish
- > **BC195B** Polished stainless steel finish



**BC634 DOLPHIN BEHIND MIRROR SOAP DISPENSER**

**320 MM HEIGHT**  
**140 MM WIDTH**  
**120 MM PROJECTION**

- > Easy to fit behind mirror infrared soap dispenser for contemporary washroom design with an uncluttered appearance
- > Designed to be fitted behind hinged mirror or panel (access required to replenish soap supply)
- > Touch-free – thus eliminating cross-contamination
- > Capacity 1,000 ml



**BC549 IBM DOLPHIN BEHIND MIRROR SOAP DISPENSER**

**335 MM HEIGHT**  
**294 MM WIDTH**  
**140 MM PROJECTION**

- > Designed to be fitted behind a hinged mirror
- > Detachable refill receptacle.
- > Soap Pump – approximately 1.5 ml/stroke
- > Stainless steel operating lever
- > Disinfectant, standard liquid soap and foam soap models available.
- > 304 Stainless steel back plate
- > Capacity 1200ml





## PAPER TOWEL DISPENSERS



### BC928 DOLPHIN STEEL MAXI PAPER TOWEL DISPENSER

370 MM HEIGHT  
280 MM WIDTH  
103 MM PROJECTION

- > Lockable paper towel dispenser
- > High quality satin stainless steel
- > Ideal for larger washrooms
- > Holds 450 C-fold or multi-fold towels
- > **BC928** Satin stainless steel finish
- > **BC928B** Polished stainless steel finish
- > **BC928W** White metal finish



### BC918 DOLPHIN STAINLESS STEEL MINI PAPER TOWEL DISPENSER

203 MM HEIGHT  
280 MM WIDTH  
102 MM PROJECTION

- > Lockable paper towel dispenser
- > High quality satin stainless steel
- > Ideal for smaller washrooms
- > Holds 250 C-fold or multi-fold towels
- > **BC918** Satin stainless steel finish
- > **BC918B** Polished stainless steel finish



**BC8312 DOLPHIN STAINLESS STEEL STANDARD CENTRE-FEED DISPENSER**

**370 MM HEIGHT**  
**210 MM WIDTH**  
**218 MM PROJECTION**

- > Lockable centre feed dispenser
- > High quality stainless steel
- > Takes most standard centre-feed rolls up to 200mm diameter
- > Also available as white metal on request (**BC8312WH**) or polished stainless steel (**BC 8312B**)



**BC9288 DOLPHIN MIRROR PAPER TOWEL DISPENSER**

**358 MM HEIGHT**  
**298 MM WIDTH**  
**120 MM PROJECTION**

- > Holds C-fold or multifold towels
- > High quality stainless steel
- > Ideal for high class washroom designs
- > Easy to refill from below mirror with a keyed lock.
- > Hinged door at base.
- > Designed to be located behind fixed mirror or panel
- > Recommended mounting height – minimum 175mm above counter.



**BC9289 DOLPHIN PAPER TOWEL DISPENSER – BEHIND MIRROR / SURFACE MOUNTED**

**440 MM HEIGHT**  
**268 MM WIDTH**  
**115 MM PROJECTION**

- > Quality satin stainless steel
- > Can be used on its own or as a behind mirror dispenser only where the mirror opens as a hinged door
- > Holds 600 c-fold or interfold towels
- > Mirror not included



**BC919 DOLPHIN PAPER TOWEL DISPENSER**

**152 MM HEIGHT**  
**279 MM WIDTH**  
**100 MM PROJECTION**

- > High quality 304 stainless steel
- > Satin finish, welded corners – no sharp edges
- > Capacity for 150 paper towels
- > Free standing dispenser – that can be fixed to counter top via screw holes in the base



## TOILET TISSUE DISPENSERS



### BC707-2SS DOLPHIN TWO-ROLL TOILET ROLL HOLDER

290 MM HEIGHT  
116 MM WIDTH  
130 MM PROJECTION

- > Lockable and vandal resistant quality stainless steel construction
- > Dispenses quality toilet rolls up to a maximum of 125mm diameter and 110mm wide
- > Capacity two standard toilet rolls
- > Ideal for schools, restaurants, offices, councils and commercial premises
- > **BC707-2SS** Satin stainless steel finish – two roll dispenser
- > **BC707-2W** White metal finish – two roll dispenser
- > **BC707-3SS** Satin stainless steel finish – three roll dispenser
- > **BC707-3W** White metal finish – three roll dispenser



### BC267 DOLPHIN DOUBLE STAINLESS STEEL LOCKABLE TOILET PAPER DISPENSER

270 MM HEIGHT  
104 MM WIDTH  
100 MM PROJECTION

- > Quality satin stainless steel
- > Double toilet roll holder
- > Lockable
- > Simple yet stylish
- > Capacity two standard toilet rolls
- > **BC267** Satin stainless steel finish
- > **BC267B** Polished stainless steel finish



**BC271-1 DOLPHIN STAINLESS STEEL TOILET ROLL HOLDER**

**93 MM HEIGHT**  
**147 MM WIDTH**  
**23 MM PROJECTION**

- > High quality polished stainless steel
- > Ideal for prestigious office, hotel and residential projects
- > Solid stainless steel bracket for firm, anti-vandal fixing to the toilet wall or cubicle
- > 10mm Ø bar
- > Designed to hold one standard toilet roll
- > **BC271-1** Satin stainless steel finish
- > **BC271-1B** Polished stainless steel finish



**BC271-2 DOLPHIN STAINLESS STEEL TOILET ROLL HOLDER**

**93 MM HEIGHT**  
**271 MM WIDTH**  
**23 MM PROJECTION**

- > High quality satin stainless steel
- > Ideal for prestigious office, hotel and residential projects
- > Solid stainless steel bracket for firm, anti-vandal fixing to the toilet wall or cubicle
- > 10mm Ø bar
- > Designed to hold two standard toilet roll
- > **BC271-2** Satin stainless steel finish
- > **BC271-2B** Polished stainless steel finish



**BC722 DOLPHIN SPARE TOILET ROLL HOLDER**

**230 MM HEIGHT**  
**85 MM WIDTH**  
**97.5 MM PROJECTION**

- > Timeless design for prestigious appearance in high class environments
- > 304 stainless steel for easy care and durability
- > Robust 'hidden fix' anti-rotation wall plate fixing for secure anti-theft mounting
- > Available in satin (brushed) stainless steel to compliment other Dolphin products
- > Designed to hold 2 spare toilet rolls



**BC4302 DOLPHIN STAINLESS STEEL BULK PACK TOILET TISSUE DISPENSER**

**224 MM HEIGHT**  
**133 MM WIDTH**  
**144 MM PROJECTION**

- > Lockable
- > High quality satin stainless steel
- > Vandal resistant
- > Inter-leaved toilet tissue dispenser
- > Ideal for accessible washrooms
- > **BC4302** Satin stainless steel finish
- > **BC4302B** Polished stainless steel finish

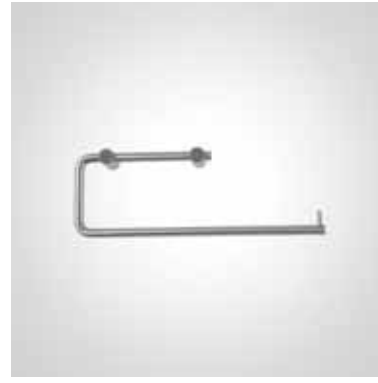




**BC270-1 DOLPHIN STAINLESS STEEL TOILET ROLL HOLDER**

**90 MM HEIGHT**  
**150 MM WIDTH**  
**40 MM PROJECTION**

- > Single standard toilet roll holder
- > Contemporary design with two concealed fixings
- > High quality satin stainless steel
- > Holder diameter 10mm
- > Designed to hold 1 standard toilet rolls
- > Ideal for prestigious office, hotel and residential projects
- > **BC270-1** Satin stainless steel finish
- > **BC270-1B** Polished stainless steel finish



**BC270-2 DOLPHIN STAINLESS STEEL TOILET ROLL HOLDER**

**90 MM HEIGHT**  
**150 MM WIDTH**  
**40 MM PROJECTION**

- > Single standard toilet roll holder
- > Contemporary design with two concealed fixings
- > High quality satin stainless steel
- > Holder diameter 10mm
- > Designed to hold 1 standard toilet rolls
- > Ideal for prestigious office, hotel and residential projects
- > **BC270-2** Satin stainless steel finish
- > **BC270-2B** Polished stainless steel finish



**BC945 DOLPHIN STAINLESS STEEL DOUBLE MINI JUMBO DISPENSER**

**520 MM HEIGHT**  
**290 MM WIDTH**  
**150 MM PROJECTION**

- > Quality satin stainless steel cover
- > High impact ABS inner
- > Lockable
- > Dispenses two x 250m mini jumbo toilet rolls
- > Core size diameter 2 1/4"
- > Paper saver – no wasted stub rolls, giving up to 30% paper saving



**BC936 DOLPHIN STAINLESS STEEL JUMBO ROLL DISPENSER**

**322 MM DIAMETER**  
**124 MM PROJECTION**

- > Quality stainless steel construction
- > Lockable
- > Core size diameter: 2 1/4"
- > Dispenses 400m jumbo toilet rolls
- > **BC936** Satin stainless steel finish
- > **BC936W** White metal finish



**BC936M DOLPHIN DOLPHIN STAINLESS STEEL FOUR ROLL TOILET ROLL HOLDER**

**326 MM DIAMETER**  
**124 MM PROJECTION**

- > Quality satin stainless steel construction
- > Lockable
- > Dispenses 4 x standard toilet rolls
- > Only one roll is accessible at a time
- > Eliminates toilet roll theft



**BC925 DOLPHIN STAINLESS STEEL MINI JUMBO DISPENSER**

**275 MM DIAMETER**  
**122 MM PROJECTION**

- > Lockable
- > High quality stainless steel
- > Full stainless steel back for secure mounting
- > Inner core diameter: 2.25"
- > **BC925** Satin stainless steel finish
- > **BC925W** White metal finish



**BC800 DOLPHIN STAINLESS STEEL TOILET ROLL HOLDER**

**305 MM HEIGHT**  
**147 MM WIDTH**  
**165 MM PROJECTION**

- > Quality stainless steel construction
- > Satin and polished finish available
- > Lockable
- > Dispenses two x toilet rolls up to 135mm diameter
- > Reserve roll drops in place automatically



**BC721 DOLPHIN TOILET ROLL HOLDER**

**108 MM HEIGHT**  
**150 MM WIDTH**  
**66 MM PROJECTION**

- > Timeless design for prestigious appearance in high class environments
- > 304 stainless steel for easy care and durability
- > Robust 'hidden fix' anti-rotation wall plate fixing for secure anti-theft mounting
- > Available in satin (brushed) stainless steel to complement other Dolphin products
- > Designed to hold a single toilet roll



**BC266 DOLPHIN STAINLESS STEEL TOILET ROLL HOLDER**

**70 MM HEIGHT**  
**135 MM WIDTH**  
**98 MM PROJECTION**

- > Quality satin stainless steel construction
- > Non lockable stainless steel spindle
- > Weighted flap to reduce paper wastage
- > Capacity one standard toilet roll
- > **BC266** Satin stainless steel finish
- > **BC266B** Polished stainless steel finish



**BC850 DOLPHIN TOILET ROLL HOLDER (SPECIAL ROLL TYPE)**

**272 MM HEIGHT**  
**135 MM WIDTH**  
**155 MM PROJECTION**

- > Lockable high quality satin stainless steel
- > Holds two special 100m rolls 'pendimatic/ultimatic' type rolls
- > Inertia brake mechanism prevents paper wastage
- > Reserve roll drops into place automatically
- > **BC850** Satin stainless steel finish
- > **BC850W** White metal finish



**DH437SS DOLPHIN WALL MOUNTED SPARE TOILET ROLL HOLDER**

**340 MM HEIGHT**  
**8 MM DIAMETER**

- > Wall mounted spare toilet roll holder
- > Satin stainless steel finish
- > **DH437SS** Satin stainless steel finish
- > **DH437PSS** Polished stainless steel finish



**BC4302R DOLPHIN RECESSED BULK PACK TOILET TISSUE DISPENSER**

**403 MM HEIGHT**  
**203 MM WIDTH**  
**2 MM PROJECTION**

- > High quality stainless steel
- > Takes two packs of bulk pack toilet tissue
- > Vandal resistant – 'almost vandal proof'
- > Ideal for harsh environments, especially public places
- > Ideal for accessible washrooms
- > Very robust – 1.5mm thick stainless steel
- > Capacity 350 tissues

## BINS



### BC130 DOLPHIN STAINLESS STEEL 30 LITRE BIN

650 MM HEIGHT  
355 MM WIDTH  
159 MM PROJECTION

- > High quality Stainless Steel Bin
- > Spring loaded push in flap
- > Removable lid for easy emptying
- > Can be wall mounted with hidden fixings
- > Available in a polished stainless steel finish on request
- > Innovative bag holder
- > 30 litre capacity

### BC155 DOLPHIN STAINLESS STEEL D-SHAPED BIN WITH CASTORS

600 MM HEIGHT  
320 MM WIDTH  
325 MM PROJECTION

- > High quality satin stainless steel
- > Complete with castors for minimal damage to floor surfaces and easy placement/emptying
- > Can be useful for applications where the disposal of used towels is through a hole in the counter (to separate order)
- > Mesh inner basket makes emptying easier
- > Powder Coated Wire Inserts available for this product (at extra cost) to support a liner and make emptying lot easier
- > 70 litre capacity



### BC150 DOLPHIN STAINLESS STEEL 50 LITRE BIN

**707 MM HEIGHT**  
**335 MM WIDTH**  
**258 MM PROJECTION**

- > High quality Stainless Steel Bin
- > Spring loaded push in flap
- > Removable lid for easy emptying
- > Can be wall mounted
- > 50 litre capacity



### BC140 DOLPHIN STAINLESS STEEL ROUND BIN WITH CASTORS

**600 MM HEIGHT**  
**315 MM DIAMETER**

- > High quality satin stainless steel
- > Complete with castors for minimal damage to floor surfaces and easy placement/emptying
- > Can be useful for applications where the disposal of used towels is through a hole or bin ring in the counter (to separate order)
- > Powder Coated Wire Inserts available for this product (at extra cost) to support a liner and make emptying lot easier
- > 42 litre capacity



### BC980 DOLPHIN STAINLESS STEEL SANITARY BIN

**600 MM HEIGHT**  
**169 MM WIDTH**  
**250 MM PROJECTION**

- > High quality Stainless Steel Bin
- > Bin with vanity flap
- > Bin suitable for bag liner service
- > Floor standing
- > Includes painted steel insert
- > 20 litre capacity



### BC981 DOLPHIN PLASTIC SANITARY BIN

**540 MM HEIGHT**  
**490 MM WIDTH**  
**145 MM PROJECTION**

- > All plastic construction
- > Slim fit for easy location
- > Easy bag filling and replacement
- > Pedal operated bin
- > 25 litre capacity



**BC920 DOLPHIN STAINLESS STEEL  
SURFACE MOUNTED BIN**

**560 MM HEIGHT**  
**405 MM WIDTH**  
**305 MM PROJECTION**

- > High quality satin stainless steel
- > Wall mounted
- > Open top
- > Internal wire basket available
- > 67 litre capacity



**BC920-I DOLPHIN WIRE BASKED FRAME**

**540 MM HEIGHT**  
**400 MM WIDTH**  
**300 MM PROJECTION**

- > Quality wire baskets for inserting into the **BC920**
- > Keeps bags tidy – no need to drape them over the stainless steel bin
- > Plastic coated steel – hygienic and easy to keep clean



**BC921 DOLPHIN STAINLESS STEEL  
SURFACE MOUNTED BIN**

**440 MM HEIGHT**  
**360 MM WIDTH**  
**155 MM PROJECTION**

- > High quality satin stainless steel
- > Wall mounted
- > Open top
- > Internal wire basket available
- > **BC921-I** wire bin can be used with this bin
- > 24 litre capacity

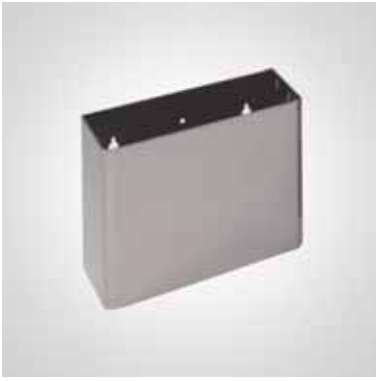


**BC921-I DOLPHIN WIRE BASKED FRAME**

**420 MM HEIGHT**  
**355 MM WIDTH**  
**150 MM PROJECTION**

- > Quality wire baskets for inserting into the **BC921** bin
- > Keeps bags tidy - no need to drape them over the stainless steel bin
- > Plastic coated steel - hygienic and easy to keep clean





**BC922 DOLPHIN STAINLESS STEEL SURFACE MOUNTED BIN**

**230 MM HEIGHT**  
**275 MM WIDTH**  
**130 MM PROJECTION**

- > High quality satin stainless steel
- > Wall mounted
- > Open top
- > 8 litre capacity



**BC915 DOLPHIN BIN RING**

**250 MM HEIGHT**  
**150 MM DIAMETER**

- > Superior quality and timeless design for prestigious washrooms
- > High quality brushed stainless steel finish
- > High class welded seams for excellence in user experience
- > Unique extended depth to hide bin contents from easy visibility
- > Satin stainless steel



**BC170 DOLPHIN STAINLESS STEEL UNDER COUNTER BIN WITH LOCKING DOOR**

**450 MM HEIGHT**  
**298 MM WIDTH**  
**516 MM PROJECTION**

- > High quality satin stainless steel
- > Flush mounted key lock – keyed alike to many of our BC range dispensers
- > Designed for applications where the disposal of used towels is through a hole or bin ring in the counter (to separate order)
- > Mounting holes in rear and top allow for easy fixing to wall and/or underside of counter
- > Powder Coated Wire Inserts available for this product (at extra cost) to support a liner and make emptying lot easier – **BC170-I**
- > 64 litre capacity



**DOLPHIN POLISHED STAINLESS STEEL PEDAL BIN**

- > High quality Stainless Steel Pedal Bin
- > Plastic liner
- > **BC110** 320mm height / 210 diameter / 5 litre capacity
- > **BC111** 390mm height / 250 diameter / 12 litre capacity
- > **BC112** 530mm height / 300 diameter / 18 litre capacity

# TOILET BRUSHES



## BC723 DOLPHIN FREESTANDING TOILET BRUSH SET

**391 MM HEIGHT**  
**88 MM DIAMETER**

- > Timeless design for prestigious appearance in high class environments
- > 304 stainless steel for easy care and durability
- > Available in satin (brushed) stainless steel to complement other Dolphin products
- > Replaceable nylon brush head
- > Plastic inner container, removable for emptying/cleaning



## BC9387 DOLPHIN STAINLESS STEEL TOILET BRUSH HOLDER

**410 MM HEIGHT**  
**101 MM DIAMETER**

- > High quality satin stainless steel
- > Plastic insert
- > Wall-mounted
- > Replacement brushes available
- > Concealed fixings



### BC727 DOLPHIN TOILET BRUSH SET

133 MM HEIGHT  
88 MM DIAMETER

- > Timeless design for prestigious appearance in high class environments
- > 304 stainless steel for easy care and durability
- > Robust 'hidden fix' anti-rotation wall plate fixing for secure anti-theft mounting
- > Available in satin (brushed) stainless steel to complement other Dolphin products
- > Replaceable nylon brush head
- > Plastic inner container, removable for emptying/cleaning



### BC426 DOLPHIN STAINLESS STEEL TOILET BRUSH SET

360 MM HEIGHT  
105 MM DIAMETER

- > High quality satin stainless steel
- > Plastic insert included
- > Free standing



### BC9831 / BC9832 DOLPHIN TOILET BRUSH SET

376 MM HEIGHT  
90 MM DIAMETER

- > Timeless design for prestigious appearance in high class environments
- > 304 stainless steel for easy care and durability
- > Double fixing point to ensure anti-rotation
- > Replaceable nylon brush head
- > Plastic inner container, removable for emptying/cleaning
- > **BC9831SS** Satin stainless steel wall mounted
- > **BC9831PS** Polished stainless steel finish wall mounted
- > **BC9832SS** Satin stainless steel finish free standing
- > **BC9832PS** Polished stainless steel finish free standing



### BC427 DOLPHIN STAINLESS STEEL TOILET BRUSH SET

360 MM HEIGHT  
105 MM DIAMETER

- > High quality polished stainless steel
- > Plastic insert included
- > Free standing



## HAIR DRYERS



**BC109-SDB DOLPHIN BUTTON OPERATED STYLER  
HAIR DRYER**

290 MM HEIGHT  
200 MM WIDTH  
90 MM PROJECTION

- > Slimline stainless steel casing with mirrored front panel
- > Internal adjustable safety timer pre-set to approx 2 minute.
- > Adjust between approximately 0.5 and 3 minutes



**BC109-SDC DOLPHIN COIN OPERATED STYLER  
HAIR DRYER**

290 MM HEIGHT  
200 MM WIDTH  
90 MM PROJECTION

- > Slimline stainless steel casing with mirrored front panel
- > Internal adjustable safety timer pre-set to approx 2 minute.
- > Adjust between approximately 0.5 and 3 minutes
- > Accepts 20p coins



#### BC109-IHD DOLPHIN HEAVY DUTY DRYER

**297 MM HEIGHT**  
**580 MM WIDTH**  
**215 MM PROJECTION**

- > Robust push start hair dryer with 90 second timer
- > Durable carbon steel casing with resilient motor and components for high use public areas like leisure centres / public swimming pools etc
- > One year manufacturer's guarantee with labour (except hose)
- > Overall power absorption – 1000 W
- > Air speed - 97,2 km/h
- > Noise level - 78 dBA
- > Class 2 and IP21 rated



#### BC109-ST5 DOLPHIN VALERA HAIR DRYER

**280 MM HEIGHT**  
**280 MM WIDTH**

- > Powerful 1800W motor
- > Black plastic
- > Attractively designed 'Salon' type dryer
- > 2 speed, 3 heat drying option + cool setting
- > Can be hard wired into 13A fused spur.
- > Wall mounted hair dryer holder included.
- > 6 month manufacturer's warranty
- > IP rating not applicable as not a fixed item



#### BC109-BHS DOLPHIN ELEGANCE HAIR DRYER

**262 MM HEIGHT**  
**190 MM WIDTH**  
**90 MM PROJECTION**

- > White plastic
- > Powerful 1200W motor
- > Principally designed for the hotel bathrooms
- > Class 2 and IP24 rated for wet areas
- > Auto start/stop and cut-off
- > Wall mounting bracket
- > One year manufacturer's warranty
- > Please Note: not suitable for high use areas like leisure centres / public swimming pools etc



## ACCESSORIES



**BC726 DOLPHIN DOUBLE ROBE HOOK**

**48 MM DIAMETER**  
**60 MM PROJECTION**

---

- > Timeless design for prestigious appearance in high class environments
- > 304 stainless steel for easy care and durability
- > Robust 'hidden fix' anti-rotation wall plate fixing for secure anti-theft mounting
- > Available in satin (brushed) stainless steel to compliment other Dolphin products



**BC725 DOLPHIN SINGLE ROBE HOOK**

**48 MM DIAMETER**  
**60 MM PROJECTION**

---

- > Timeless design for prestigious appearance in high class environments
- > 304 stainless steel for easy care and durability
- > Robust 'hidden fix' anti-rotation wall plate fixing for secure anti-theft mounting
- > Available in satin (brushed) stainless steel to compliment other Dolphin products





**BC402 DOLPHIN STAINLESS STEEL COAT HOOK**

**35 MM DIAMETER**  
**42 MM PROJECTION**

- > High quality satin stainless steel coat hook



**BC404 DOLPHIN FLOOR MOUNTED DOOR STOP**

**39 MM HEIGHT**  
**40 MM DIAMETER**

- > High quality satin stainless steel
- > Anti theft internal fixing



**BC403 DOLPHIN STAINLESS STEEL COAT HOOK/  
DOOR STOP**

**70 MM DIAMETER**  
**70 MM PROJECTION**

- > High quality Stainless Steel



**BC278 DOLPHIN STAINLESS STEEL SANITARY BAG  
DISPENSER**

**136 MM HEIGHT**  
**92 MM WIDTH**  
**24 MM PROJECTION**

- > Quality satin stainless steel
- > Holds one sanitary bag box



**BC900 DOLPHIN TOILET SEAT SANITISER DISPENSER**

**200 MM HEIGHT**  
**100 MM WIDTH**  
**110 MM PROJECTION**

- > Stylish design
- > Quality stainless steel dispenser
- > Holds a 300ml cartridge
- > Ideal for public washrooms
- > User applies sanitising liquid with toilet tissue or paper towel



**BC728 DOLPHIN TOWEL RAIL**

**650 MM LENGTH**  
**48 MM DIAMETER OF WALL PLATE COVERS**  
**65 MM PROJECTION**

- > Timeless design for prestigious appearance in high class environments
- > 304 stainless steel for easy care and durability
- > Robust 'hidden fix' anti-rotation wall plate fixing for secure anti-theft mounting
- > Available in satin (brushed) stainless steel to complement other Dolphin products



**BC750 / BC751 DOLPHIN STAINLESS STEEL SHELF**

**45 MM HEIGHT**  
**150 MM PROJECTION**

- > Prestige quality
- > Almost vandal proof
- > Ideal for public or prestigious washrooms
- > Suitable for disabled washrooms
- > **BC750** Width of 400mm
- > **BC751** Width of 250mm



**BC275 DOLPHIN FACIAL TISSUE DISPENSER**

**70 MM HEIGHT**  
**287 MM WIDTH**  
**138 MM PROJECTION**

- > High quality polished Stainless Steel tissue dispenser
- > Holds one standard Kleenex tissue box
- > Base of dispenser designed to be fixed to surface with 4 mounting screws provided (plugs for masonry not supplied)
- > Lid of dispenser secured to base via two sprung clips
- > Capacity 300 single ply tissues
- > See also **BC275R** for recessed version



## COMBINATION UNITS



### BC30SCA DOLPHIN WASH STATION

**815 MM HEIGHT**  
**422 MM WIDTH**  
**74 MM PROJECTION**

- > The Dolphin Wash Station provides a complete hand washing facility at the point of use. An ideal solution where space is at a premium.
- > Unit automatically dispenses a measured amount of liquid soap. After a time delay allowing the user to lather hands a measured amount of temperature controlled water is dispensed. Finally the integral warm air dryer is activated to dry hands.
- > Finished in satin stainless steel
- > Includes an integral water heater
- > 1 bar minimum water pressure required at a minimum static pressure of 7 bar
- > WRAS approved



### BC706 DOLPHIN RECESSED PAPER TOWEL DISPENSER/ WASTE BIN COMBINATION UNIT

**1400 MM HEIGHT**  
**330 MM WIDTH**  
**14 MM PROJECTION**

- > Semi-recessed paper towel dispenser and waste receptacle
- > Made from type-304 satin stainless steel; all-welded construction.
- > Bin has removable, leakproof, rigid moulded plastic waste-container
- > 50mm frame can be added to the unit if you have a wall opening of only 95mm deep – this frame makes the unit project by 64mm
- > Satin stainless steel
- > 600 C-fold, 800 multifold, or 1100 singlefold paper towels.
- > Bin capacity 24 litres



**BC27-1SCA DOLPHIN RECESSED PAPER TOWEL DISPENSER**

**900 MM HEIGHT**  
**320 MM WIDTH**  
**16 MM PROJECTION**

- > Contemporary modern design fits into any scheme
- > Very slimline unit that can fit into a 100mm recess
- > Projection for all units is only 16mm maximising available space in the washroom
- > Use in conjunction with the **BC27-2SCA** Dolphin Velocity Eco Hand Drier and the **BC27-3SCA** Recessed Paper Towel Dispenser
- > 24 litre capacity



**BC27-2SCA DOLPHIN ECO SLIMLINE RECESSED HAND DRYER**

**400 MM HEIGHT**  
**320 MM WIDTH**  
**10 MM PROJECTION**

- > Quality Satin Stainless Steel fascia
- > Motor only 250-500W (adjustable)
- > Heater element 250-500W (adjustable and with an on/off switch facility)
- > Use in conjunction with **BC27-1SCA** and **BC27-3SCA**



**BC27-3SCA DOLPHIN RECESSED PAPER TOWEL DISPENSER**

**579 MM HEIGHT**  
**320 MM WIDTH**  
**16 MM PROJECTION**

- > Contemporary modern design fits into any scheme
- > Very slimline unit that can fit into a 100mm recess
- > Projection for all units is only 16mm maximising available space in the washroom
- > Satin stainless steel front and a robust zinc-plated back plate construction
- > 3 year manufacturers warranty
- > Use in conjunction with the **BC27-2SCA** Dolphin Velocity Eco Hand Drier and
- > **BC27-1SCA** Dolphin Slimline Recessed Bin



**BC27-2SCA**  
with  
**BC27-1SCA**

**BC27-3SCA**  
with  
**BC27-1SCA**

**BC27-3SCA**  
with  
**BC27-2SCA**  
and  
**BC27-1SCA**

**BC27-3SCA**  
with  
**BC27-2SCA**



## CONSUMABLES



### BC400A DOLPHIN FOAM SOAP CARTRIDGE

- > For **BC400** / **BC410** Foam Soap Dispensers
- > Case quantity of 6
- > Dispenses 4ml of soap per shot
- > 800ml



### LUXURY PAPER TOWELS

**105 MM** WIDTH  
**220 MM** LENGTH

- > Luxury hand towels
- > 2-ply quality
- > Embossed



### LUXURY FOAM SOAP

- > 5 litre soap
- > High quality soap



### LUXURY LIQUID SOAP

- > 5 litre soap
- > High quality soap



### DOLPHIN LIQUID SOAP

- > **BC121LFS** Dolphin Luxury Foam Soap (6 x 1 litre)
- > **BC121AGS** Dolphin Foam Sanitizer (4 x 1 litre)
- > **BC124-AB** Dolphin Antibac Soap (6 x 1 litre)
- > **BC124-LS** Dolphin Luxury Pink Soap (6 x 1 litre)
- > **BC124-AG** Dolphin Alcolgel Soap (6 x 1 litre)



### BC900A DOLPHIN TOILET SEAT SANITISER

- > For **BC900** / **BC910** toilet seat sanitiser dispenser
- > Case quantity of 12
- > 300ml





#### **BC148 DOLPHIN STAINLESS STEEL CLEANING KIT**

- > Dolphin Stainless Steel Cleaning Kit
- > Contents: 1 x 500ml Inox Clean, 1 x 500ml Inox Protect, 1 x Dolphin E-Cloth Instructions, Stored in a plastic container



#### **BC288A DOLPHIN SANIBAG BOXES**

- > Sanitary Disposal Bags
- > To fit **BC278** and **DP5122** Dispensers
- > 25 bags per box



#### **BC036LCR DOLPHIN NAPPY CHANGER LINERS**

- > Soft, absorbant sanitary liners with plastic waterproof lining
- > Maximise hygiene by catching accidental spills and protect babies from previous users
- > 500 liners per pack

Our Dolphin Elements texture was inspired by the Long Beaked Common Dolphin, another highly distinctive species, with a grey and yellow hourglass pattern on each side.

Dolphin Solutions Ltd  
Southpoint, Compass Park,  
Junction Road  
Bodiam, TN32 5BS,  
United Kingdom  
T +44 (0)1424 202 224  
info@dolphinsolutions.co.uk  
dolphinsolutions.co.uk

© Dolphin Solutions Ltd