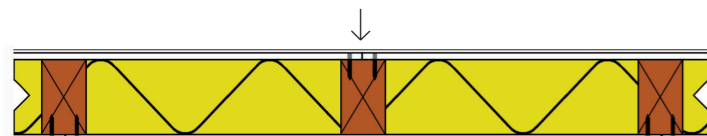


Resistant Wall Test Make ups

Timber Stud Modular

Fire on Multi-Pro XS Side with
0.5mm Plastisol Steel



60 minutes loaded partition:

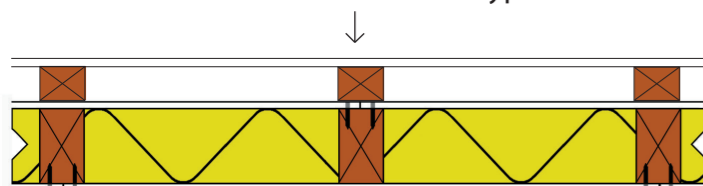
Framing:	Nominal 95mm x 35mm timber studs at maximum 600mm centres. Noggings behind horizontal board joints and at maximum 2400mm centres
Infill	Mineral Wool (minimum 45kg/m ³ , 100mm thickness)
Facade	9mm Multi-Pro XS boards fixed one side and 12.5mm fireline to the other with 30mm gyroc nails. Fixings are placed around the edge of the board and every alternate stud
Internal Plasterboard	Faced with Cova ST PVC
External Multi-Pro XS	Faced with Plastisol Steel
Total Implied Load	21 kN
Max height	3.0 metres
Overall thickness	117mm



BS 476:Part21:1999

Timber Stud Loaded

Fire on 12.5mm Fireline British Gypsum Board



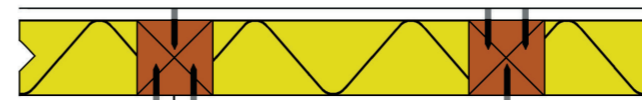
90 minutes loaded partition:

Framing:	Nominal 138 x 38mm timber studs at maximum 600mm centres. Head and base tracks and noggins (510 kg/m ³ nominal density). Nominal 45 x 45mm timber studs internally at 600mm centres.
Infill:	140mm thick Knauf Ecosse Insulation (45kg/m ³ nominal density)
Facade:	1 layer of 9mm Multi-Pro XS fixed either side to the 138 x 38mm timber studs using 80mm long steel wood screws. 12.5mm Fireline fixed using British Gypsum Gyroc Fireline fixings 32mm long. Both sets of fixings to be fixed at 300mm centres.
Total Imposed Load:	69.24kN
Max height:	2.7 metres
Overall thickness:	213mm



BS 476:Part21:1999

Timber Stud



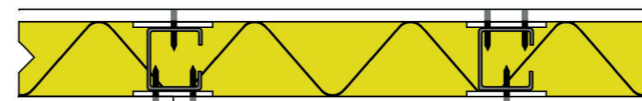
120 minutes fire resistance

Framing:	Nominal 60mm x 48mm timber studs at maximum 600mm centres. Noggings behind horizontal board joints and at maximum 2400mm centres
Infill	Mineral Wool (minimum 45kg/m ³ , 60mm thickness)
Facade	12mm Multi-Pro XS boards fixed to bothsides with 38mm long, self tapping drywall screws
Max height:	3.0 metres
Overall thickness:	84mm



BSEN 1364-1 :1999

Steel Stud



60 minutes fire resistance

Framing:	Nominal 70mm x 36mm x 0.5mm steel channel studs at maximum 600mm centres.
Infill:	Mineral Wool (minimum 45kg/m ³ , 60mm thickness)
Joint:	6mm Multi-Pro fillets 50mm wide on both sides of studs.
Backing:	minimum 100mm x 0.6mm thick galvanised sheet strapping at horizontal joints
Facade:	12mm Multi-Pro XS boards fixed to bothsides with 38mm long, self tapping drywall screws
Max height:	3.0 metres
Overall thickness:	106 mm

Non-Load Bearing in accordance with BS EN 1364-1:1999



BSEN 1364-1 :1999

Steel Stud



60 minutes fire resistance

Framing:	Lindab Construline RdB studs. 35mm x 70mm x 35mm C-section studs 0.56mm thick steel.
Infill:	Knauf 60mm - thick stonewall Density 60 kg/m ³
Joint:	Larsen Fire Retardant Silicone
Flat Strapping (Horizontal joints):	Lindab strapping. 40mm wide 1mm thick steel. 3000mm lengths
Facade:	12mm Multi-Pro boards fixed to bothsides with 38mm long, Ace fixings Drywall Screws
Max height:	3.0 metres
Overall thickness:	94 mm

Non-Load Bearing in accordance with BS EN 1364-1:1999

