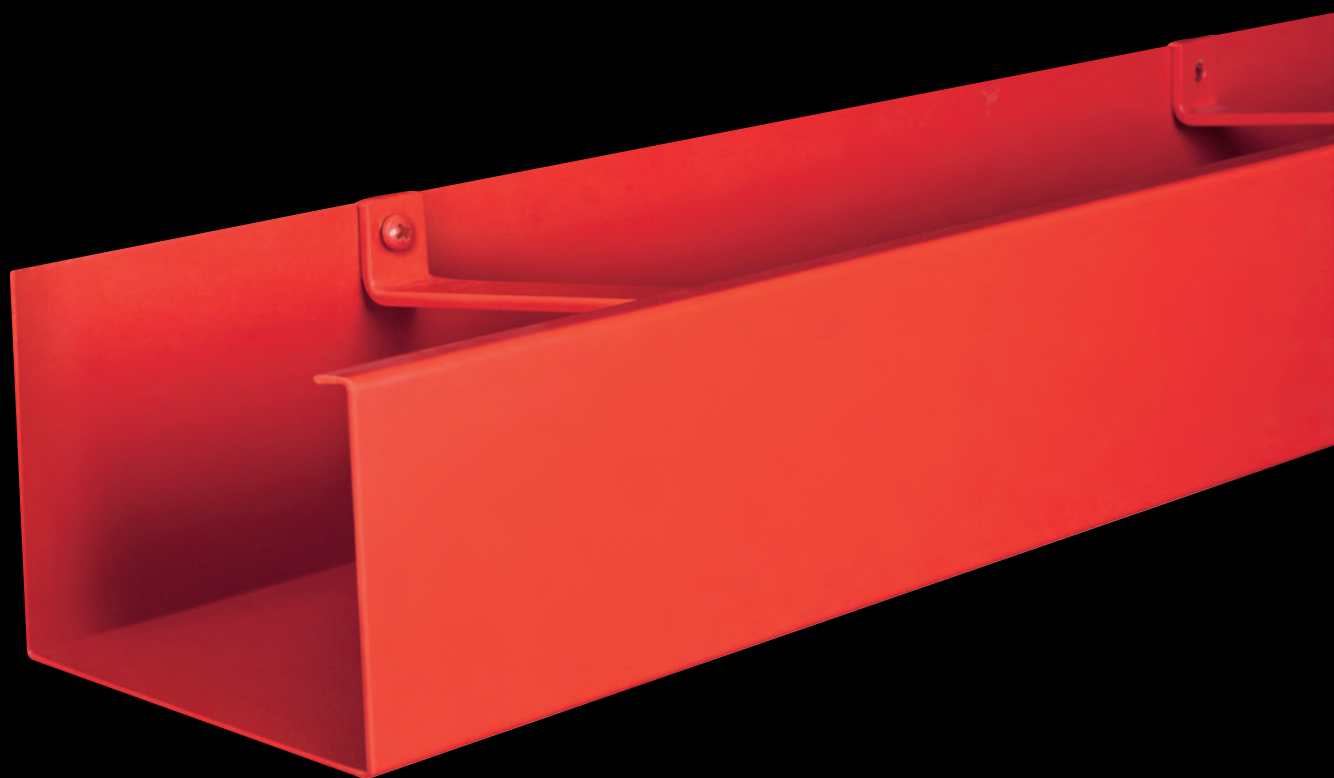
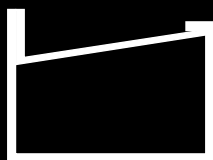


**GUTTERCREST**

# Box Gutter System

*A wide range of standard sized pressed aluminium box gutters with welded internal buttstraps and welded internal cross braces, including holes for back fixing. Other sizes as required or with feature ribs etc, can be made to suit individual requirements.*

**Wide Range of sizes available**

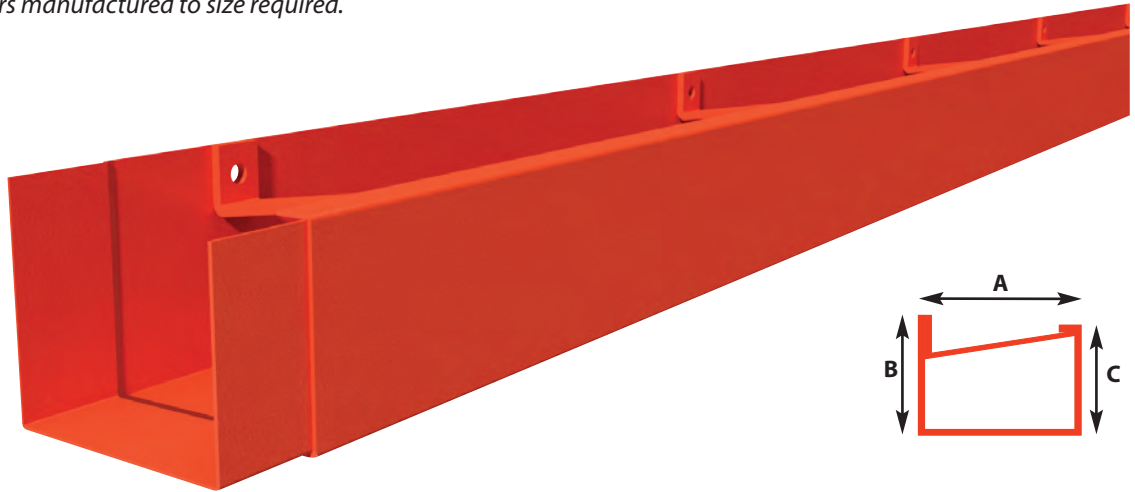


## BOX GUTTER SYSTEM

### STANDARD GUTTER LENGTHS

GUTTER (mm)	3m	1.5m	A (mm)	B (mm)	C (mm)	MATERIAL THICKNESS
100 x 75	BX1/1	BX1/2	100	85	75	2
100 x 100	BX2/1	BX2/2	100	110	100	2
125 x 100	BX3/1	BX3/2	125	110	100	2
150 x 100	BX4/1	BX4/2	150	110	100	2

Wider or deeper gutters manufactured to size required.



### STOPEND

GUTTER (mm)	R/H STOPEND	L/H STOPEND
100 x 75	BX1/10	BX1/11
100 x 100	BX2/10	BX2/11
125 x 100	BX3/10	BX3/11
150 x 100	BX4/10	BX4/11



## BOX GUTTER SYSTEM

### OUTLETS

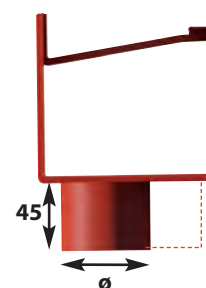
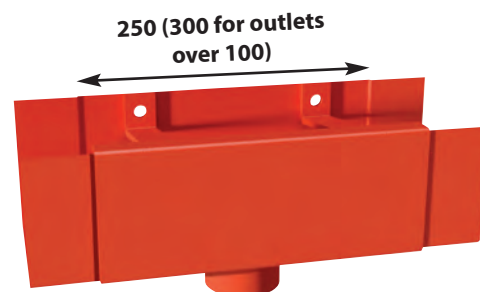
#### ROUND

GUTTER (mm)	63 Ø	75 Ø	100 Ø	125 Ø	150 Ø
100 x 75	BX1/13*	BX1/14*	-	-	-
100 x 100	BX2/13*	BX2/14*	-	-	-
125 x 100	BX3/13*	BX3/14*	BX3/15*	-	-
150 x 100	BX4/13*	BX4/14*	BX4/15*	BX4/16*	-

#### SQUARE AND RECTANGULAR

GUTTER (mm)	75 x 50	75 x 75	100 x 75	100 x 100	150 x 100	150 x 150
100 x 75	BX1/18*	BX1/19*	BX1/20*	-	-	-
100 x 100	BX2/18*	BX2/19*	BX2/20*	-	-	-
125 x 100	BX3/18*	BX3/19*	BX3/20*	BX3/21*	BX3/22*	-
150 x 100	BX4/18*	BX4/19*	BX4/20*	BX4/21*	BX4/22*	-

\* Indicates a sleeve outlet can be used in place of running outlets giving increased flexibility and cost efficiency.



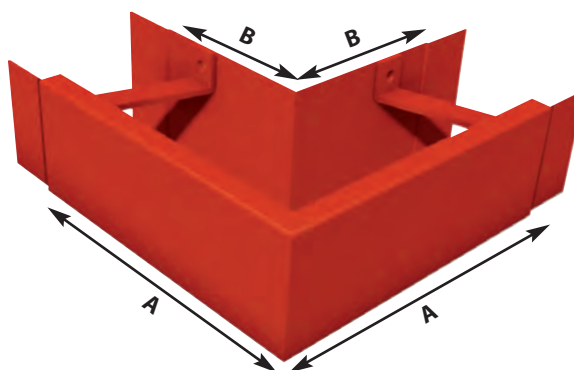
### ANGLES - INTERNAL AND EXTERNAL

GUTTER (mm)	90° EXTERNAL		90° INTERNAL		135° EXTERNAL		135° INTERNAL					
	A (mm)	B (mm)	A (mm)	B (mm)	A (mm)	B (mm)	A (mm)	B (mm)				
100 x 75	BX1/3	250	150	BX1/4	150	250	BX1/5	190	150	BX1/6	150	190
100 x 100	BX2/3	250	150	BX2/4	150	250	BX2/5	190	150	BX2/6	150	190
125 x 100	BX3/3	275	150	BX3/4	150	275	BX3/5	200	150	BX3/6	150	200
150 x 100	BX4/3	300	150	BX4/4	150	300	BX4/5	210	150	BX4/6	150	210

#### IRREGULAR ANGLE

GUTTER (mm)	EXTERNAL	INTERNAL
100 x 75	BX1/7	BX1/8
100 x 100	BX2/7	BX2/8
125 x 100	BX3/7	BX3/8
150 x 100	BX4/7	BX4/8

When ordering an irregular angle, state ref no. and actual fascia angle & note that A+B lengths vary subject to angle.



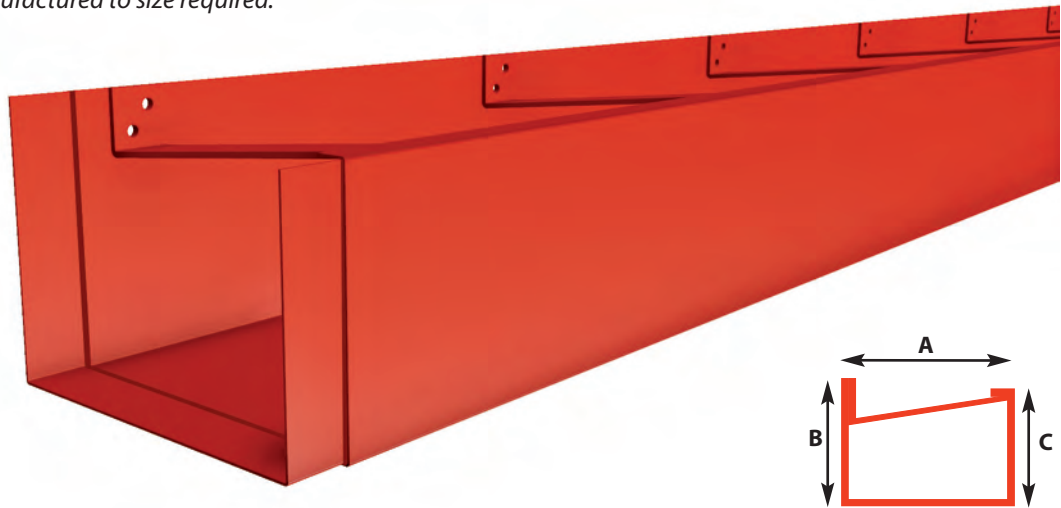
External Angle

## LARGE BOX GUTTER SYSTEM

### STANDARD GUTTER LENGTHS

GUTTER (mm)	3m	1.5m	A (mm)	B (mm)	C (mm)	MATERIAL THICKNESS
150 x 150	BX5/1	BX5/2	150	160	150	2
200 x 150	BX6/1	BX6/2	200	160	150	2
200 x 200	BX7/1	BX7/2	200	210	200	2
300 x 200	BX8/1	BX8/2	300	220	200	2

Wider or deeper gutters manufactured to size required.



### STOPENDS

GUTTER (mm)	R/H STOPEND	L/H STOPEND
150 x 150	BX5/10	BX5/11
200 x 150	BX6/10	BX6/11
200 x 200	BX7/10	BX7/11
300 x 200	BX8/10	BX8/11



### BRACKETS

We recommend that gutters of this size should be directly fixed & not bracketed.

Please contact our technical department for brackets to suit these gutters. In any instance we advise against the use of Top Rafter Brackets.

## LARGE BOX GUTTER SYSTEM

### OUTLETS

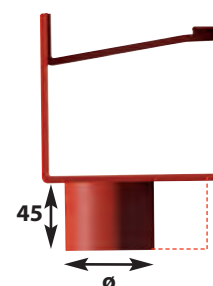
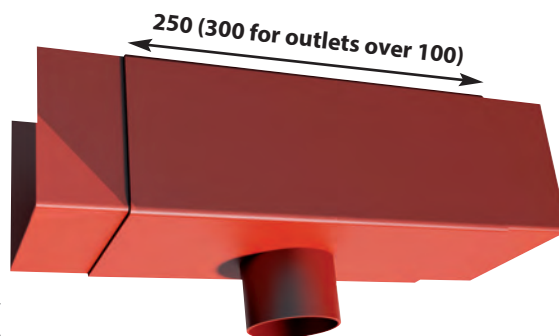
#### ROUND

GUTTER (mm)	63 Ø	75 Ø	100 Ø	125 Ø	150 Ø
150 x 150	BX5/13*	BX5/14*	BX5/15*	BX5/16*	-
200 x 150	BX6/13*	BX6/14*	BX6/15*	BX6/16*	BX6/17*
200 x 200	BX7/13*	BX7/14*	BX7/15*	BX7/16*	BX7/17*
300 x 200	BX8/13*	BX8/14*	BX8/15*	BX8/16*	BX8/17*

#### SQUARE AND RECTANGULAR

GUTTER (mm)	75 x 50	75 x 75	100 x 75	100 x 100	150 x 100	150 x 150
150 x 150	BX5/18*	BX5/19*	BX5/20*	BX5/21*	BX5/22*	-
200 x 150	BX6/18*	BX6/19*	BX6/20*	BX6/21*	BX6/22*	BX6/23*
200 x 200	BX7/18*	BX7/19*	BX7/20*	BX7/21*	BX7/22*	BX7/23*
300 x 200	BX8/18*	BX8/19*	BX8/20*	BX8/21*	BX8/22*	BX8/23*

\* Indicates a sleeve outlet can be used in place of running outlets giving increased flexibility and cost efficiency.



### ANGLES - INTERNAL AND EXTERNAL

GUTTER (mm)	90° EXTERNAL		90° INTERNAL		135° EXTERNAL		135° INTERNAL				
	A (mm)	B (mm)	A (mm)	B (mm)	A (mm)	B (mm)	A (mm)	B (mm)			
150 x 150 BX5/3	300	150	BX5/4	150	300	BX5/5	210	150	BX5/6	150	210
200 x 150 BX6/3	350	150	BX6/4	150	350	BX6/5	230	150	BX6/6	150	230
200 x 200 BX7/3	350	150	BX7/4	150	350	BX7/5	230	150	BX7/6	150	230
300 x 200 BX8/3	450	150	BX8/4	150	450	BX8/5	270	150	BX8/6	150	270

#### IRREGULAR ANGLE

GUTTER (mm)	EXTERNAL INTERNAL	
	150 x 150	BX5/7
200 x 150	BX6/7	BX6/8
200 x 200	BX7/7	BX7/8
300 x 200	BX8/7	BX8/8

When ordering an irregular angle, state ref no. and actual fascia angle & note that A+B lengths vary subject to angle.

