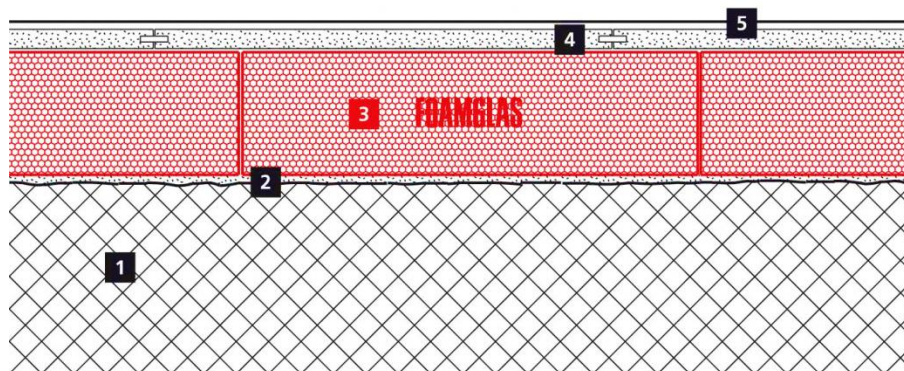


Interior floor insulation on levelling compound with dry construction slabs

FOAMGLAS® FLOOR BOARD in dry construction

Schematic drawing



System 3.1.4

1. Concrete slab
2. Liquid applied levelling surfacer
3. FOAMGLAS® FLOOR BOARD, loosely laid
4. Flooring panels for dry construction
5. Floor finish

FOAMGLAS® product properties

Waterproof – Resistant to vermin – High compressive strength –
 Non-combustible – Impervious to water vapour – Dimensionally stable –
 Acid resistant – Easily cut to shape – Ecological

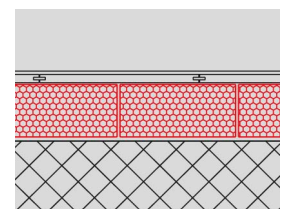
Advantages of the FOAMGLAS® system

- **Quality:** Systems with high quality materials. Quality management by systematic site inspections and professional consulting.
- **Cost efficiency:** The high durability preserves maximum value and guarantees minimal maintenance costs.
- **Sustainability:** Optimum insulation and protection against moisture for generations.
- **Safety:** Substrate with high compressive strength and free of deformation, preventing flaws and flooring damages. Cellular glass contains no toxic substances and, in case of fire, does not develop fumes or toxic gases.
- **Functionality:** Insulation and capillary barrier in one single functional layer.

Recommendations for architects

- Normally used: FOAMGLAS® FLOOR BOARD T4+, S3 or F, size 60 x1200 mm.
- Insulation thickness to meet building regulations or the project-specific U-value requirements. Please also consult our product overview. It contains information on all our products, their field of application and their specific properties.
- For the use of FOAMGLAS® under load bearing conditions, the project / structural engineer must check the admissible loads.
- **The flatness and the general conditions of the substrate are important criteria when using FOAMGLAS® (see TG1). Please contact our Technical Department to verify the criteria for the substrate.**
- **For a technically correct implementation, relevant standards and guidelines must be observed.**

Solutions for technical details and specification clauses on request. Further proposals and solutions are available any time from our technical consultants. **Updated: September 2013.** We explicitly reserve the right to change the technical specifications. The current values can be found on our website under:
www.foamglas.co.uk



Interior floor insulation on levelling compound with dry construction slabs

FOAMGLAS® FLOOR BOARD in dry construction

FOAMGLAS®
Building

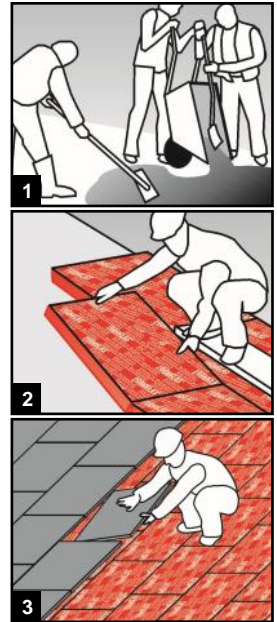
System 3.1.4

Installation instructions

- Liquid application of a self-levelling screed / mortar surfacer to level off irregularities. (1)
- FOAMGLAS® FLOOR BOARD with tight-butted and staggered joints. (2)
- Apply the dry building flooring panels, layer thickness dependent on loads and system-specific requirements following guidelines of manufacturer. (3)

Recommendations for the contractor

- The build up and tolerances of the substrate must be in accordance with relevant standards and guidelines.
- Substrate and ambient temperature should not be below + 5° C.
- **Please contact our technical consultants; they can help you by providing support or on-site assistance free of charge.**



The technical guidelines for the application and the installation of FOAMGLAS® are based on historical experience and general site practice. They do not reflect individual examples. We therefore assume no liability as to the completeness and the suitability for a specific project. Furthermore, our liability and responsibility are subject to our general conditions of sale which are not extended either by this technical data sheet nor by the consulting of our technical sales representatives.

Pittsburgh Corning UK Limited
31-35 Kirby Street,
London, EC1N 8TE
Phone +44 (0)20 7492 1731
Fax +44 (0)20 7492 1730
info@foamglas.co.uk