



Below ground, underslab insulation

Photo © Axis 3 Design

Porsche Centre, Solihull, West Midlands

Client Porsche GB

Architects Axis 3 Design Ltd., Warwick

Groundworks contractor MED Building Services; **Contractor** Talbot Construction

Construction 2011

FOAMGLAS® application Floor insulation, loadbearing FOAMGLAS® FLOOR BOARD F, 50 mm thick

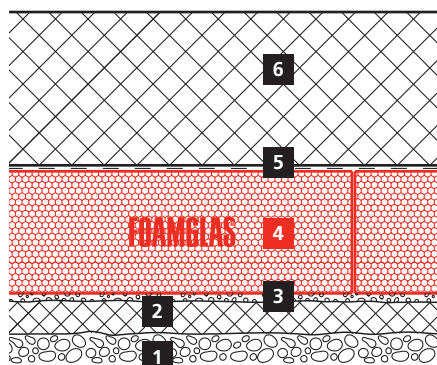
A new Porsche Centre opened in February 2012, on the southern outskirts of Solihull. The state-of-art development, featuring a 36-car showroom, is one of the largest Porsche Centres in the UK and represents a significant investment in both, the Porsche business and the local area. The distinctive showroom features a customer specification lounge in which visitors can personalise their car, a coffee bar serves as a central social hub for visitors to the Centre and a 'heritage wall' displays the rich history of Porsche, to make the stories behind the car come alive.

The workshop is equipped with 10 bays, plus a dedicated bay for a new MOT service and a Direct Dialogue facility for on-the-spot diagnosis, as well as a cosmetic repair service and tyre fitting area.

Axis 3 Design specified FOAMGLAS® FLOOR BOARD F as an underslab insulation to satisfy the target U-value requirement and eliminate thermal bridging within the foundation detail to meet Building Regulations. Due to the high loads, associated with the workshop and showroom areas, a total of 2500m²

FOAMGLAS® FLOOR BOARD F at 50 mm was specified and installed.

Kevin Conlon of project architects Axis 3 Design, explains the decision to specify the product: "We selected FOAMGLAS® for its inherent durability and high compressive strength," explains architect Kevin Conlan at Axis 3 Design, "This made it ideal to use as underslab and perimeter insulation. Its primary function is to act as insulation, but with the additional advantage of there being absolutely no risk of water absorption. This means its thermal performance is going to remain constant for the lifetime of the building."



FOAMGLAS® – endurance and high compressive strength
www.foamglas.co.uk

Build-up

- 1 Subsoil or compacted hardcore
- 2 Lean concrete mix
- 3 Levelling compound of chippings, stabilised sand or liquid mortar
- 4 **FOAMGLAS® FLOOR BOARD, loosely laid**
- 5 Separation layer
- 6 Concrete slab

