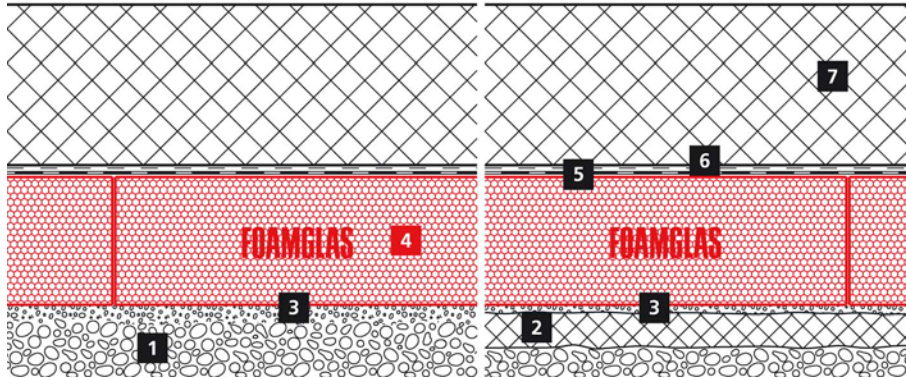


Floor insulation (load-bearing) with waterproofing on lean concrete mix or leveling compound

FOAMGLAS® READY BOARD for dry construction

Schematic drawing



System 1.1.2

1. Subsoil or compacted hardcore
2. Lean concrete mix
3. Levelling compound of chippings, stabilised sand or liquid mortar
4. FOAMGLAS® READY BOARD, loosely laid
5. Bituminous waterproofing
6. Separating layer
7. Concrete slab

FOAMGLAS® product properties

Waterproof – Resistant to vermin – High compressive strength –
Non-combustible – Impervious to water vapour – Dimensionally stable –
Acid resistant – Easily cut to shape – Ecological

Advantages of the FOAMGLAS® system

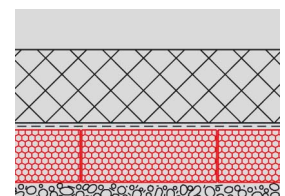
- **Quality:** Systems with high quality materials. Quality management by systematic site inspections and professional consulting.
- **Cost efficiency:** The high durability preserves maximum value and guarantees minimal maintenance costs.
- **Sustainability:** Optimum insulation and protection against moisture for generations.
- **Safety:** Provides a substructure with high compressive strength and without deformation for safe structure of the building.
- **Functionality:** Easy and efficient application of the insulation. A bituminous waterproofing membrane can directly be torched on to it. Insulation and capillary barrier in one single functional layer.

Recommendations for architects

- Normally used: FOAMGLAS® READY BOARD T4+, size 600x1200 mm.
- Insulation thickness to meet building regulations or the project-specific U-value requirements. Please also consult our product overview. It contains information on all our products, their field of application and their specific properties.
- For the use of FOAMGLAS® under load bearing conditions, the project / structural engineer must check the admissible loads.
- **The flatness and the general conditions of the substrate are important criteria when using FOAMGLAS® (see TG1). Please contact our Technical Department to verify the criteria for the substrate.**
- **For technically correct implementation, relevant standards and guidelines must be observed.**
- **Constructions on sites with a high groundwater table or high water pressure require specialist advice. Please contact our technical staff.**

Solutions for technical details and specification clauses on request. Further proposals and solutions are available any time from our technical consultants. **Updated: September 2013.** We explicitly reserve the right to change the technical specifications. The current values can be found on our website under:

www.foamglas.co.uk



Floor insulation (load-bearing) with waterproofing on lean concrete mix or leveling compound

FOAMGLAS® READY BOARD for dry construction

FOAMGLAS®
Building

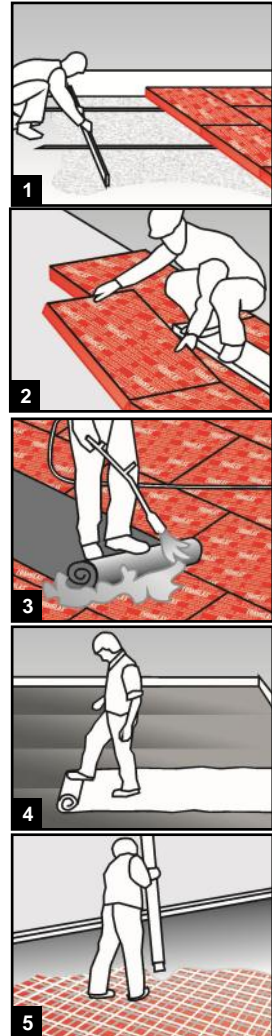
System 1.1.2

Installation instructions

- Prepare subbase in accordance with the site engineer's instructions. Pour lean concrete mix, thickness ~ 50 mm. Apply a thin layer of fine chippings, dry sand or liquid mortar, grading 3 / 6, in order to level off any irregularities. Level off the surface. (1)
- Apply FOAMGLAS® READY BOARD with staggered and tight-butted joints. (2)
- Torch applied bituminous waterproofing membrane (one or two layers dependent on the degree of humidity and on relevant standards). (3)
- Apply two separating layers, joints overlapping. (4)
- To protect against high mechanical load or heavy site traffic, apply a protective layer of lean concrete mix, thickness ~ 50 mm.
- Apply the reinforced concrete floor slab. Dimensioning according to the instructions of the structural engineer. (5)

Recommendations for the contractor

- The build-up and tolerances of the substrate must be in accordance with relevant standards and guidelines.
- Substrate and ambient temperature should not be below + 5° C.
- At the end of each day and on completion, a topcoat must be applied immediately after the insulation has been installed.
- Adequate measures should be taken in order to avoid any risks of damage by other contractors during construction.
- **Please contact our technical consultants; they can help you by providing support or on-site assistance free of charge.**



The technical guidelines for the application and the installation of FOAMGLAS® are based on historical experience and general site practice. They do not reflect individual examples. We therefore assume no liability as to the completeness and the suitability for a specific project. Furthermore, our liability and responsibility are subject to our general conditions of sale which are not extended either by this technical data sheet nor by the consulting of our technical sales representatives.

Pittsburgh Corning UK Limited
31-35 Kirby Street,
London, EC1N 8TE
Phone +44 (0)20 7492 1731
Fax +44 (0)20 7492 1730
info@foamglas.co.uk