
METAL RAILINGS

Inherently strong and offering a robust line of defence, metal railings combine aesthetic charm with the ability to deliver an imposing perimeter security solution.

Jacksons metal railings portfolio offers an extensive choice of products, spanning attractive elegantly ornate railings ideal for residential applications, through to railings which meet the discerning standards required to minimise the risk of unauthorised entry on high security sites.

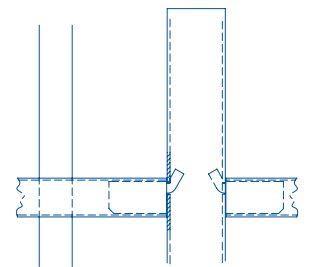
All of our standard railings come complete with tamper proof fittings and a range of matching swing or sliding gates, supplied in either a manual or automated format.

BOW TOP



Perfect for a wide variety of applications, Bow Top fencing and gates provide a versatile and durable demarcation and access solution. The pale-through-rail construction with no visible joins is immensely strong and because of its tubular design it is lighter than traditional solid steel and requires fewer support posts making installation faster and less costly.

- Unique vandal-proof panel to post connectors
- Domed post caps
- Option to include finials
- Panels can be manufactured to accommodate sloping ground
- **25-year service life guarantee**



Post to panel fixings

APPLICATIONS

- ▶ Parks
- ▶ Public areas
- ▶ Schools

PANELS

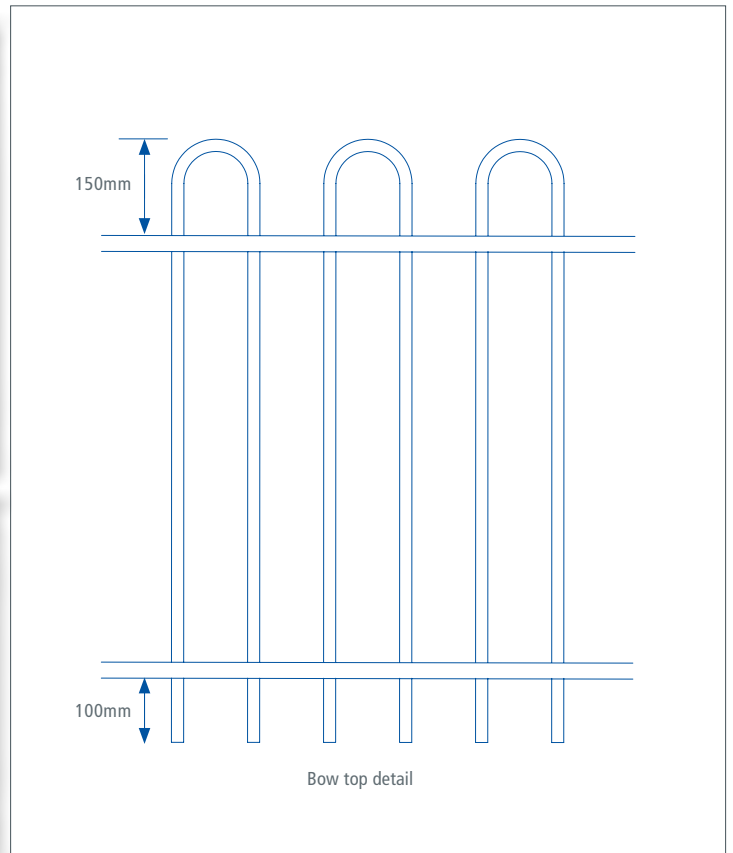
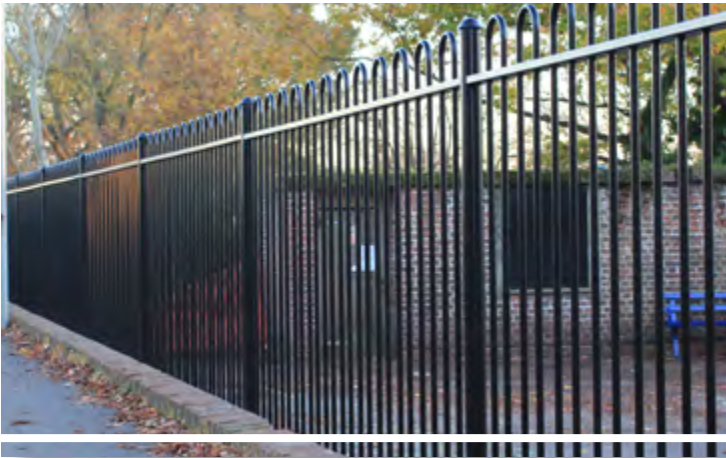
Bow Top panels have two horizontal rails 50 x 25mm, the vertical round hollow section 19mm pales are passed through the top and bottom rails at 119mm centres and welded into position.

GATES

Matching single leaf and double leaf gates available

FINIAL OPTIONS

Decorative options available, contact our sales team for more information.



| HEIGHT (mm) | POST CENTRES (mm) | POST DIMENSIONS (mm) | OVERALL POST LENGTH (mm) |
|-------------|-------------------|----------------------|--------------------------|
| 1000 | 3014 | 60.3 Ø | 1500 |
| 1200 | 3014 | 60.3 Ø | 1800 |
| 1500 | 3014 | 60.3 Ø | 2100 |
| 1800 | 3014 | 60.3 Ø | 2500 |

POST OPTIONS

- Overlength set in concrete as standard
- Base plated to bolt down onto concrete
- Cranked to suit wall mounting

FINISHES

- Hot dip galvanised to BS EN ISO 1461 as standard
- Hot dip galvanised and powder coated to BS EN 13438
- Marine coat for installations within 500m of salt water or an estuary

STANDARD COLOURS

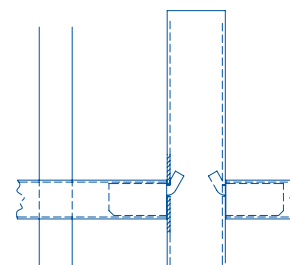
- Black RAL 9005
- Green RAL 6005
- Other colours are available on request

ORNAMENTAL



Our Ornamental fencing is designed to provide the aesthetic grace and form of traditional wrought iron railings with the strength and durability of galvanised or galvanised and powder coated steel. Whether in a parkland, corporate HQ or gated community, our Ornamental fencing adds high levels of security to a classical design.

- Custom designs available
- Pale spacing conforms to Building Regulations for anti-trap
- Various mounting options including on wall, inset or free standing
- Posts can be customised for Barbed wire / Razor wire / Rota Spike® / Alarm-aFence®
- **25-year service life guarantee**



Post to panel fixings

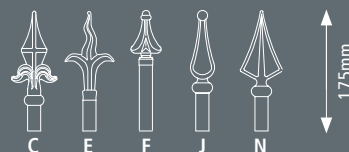
APPLICATIONS

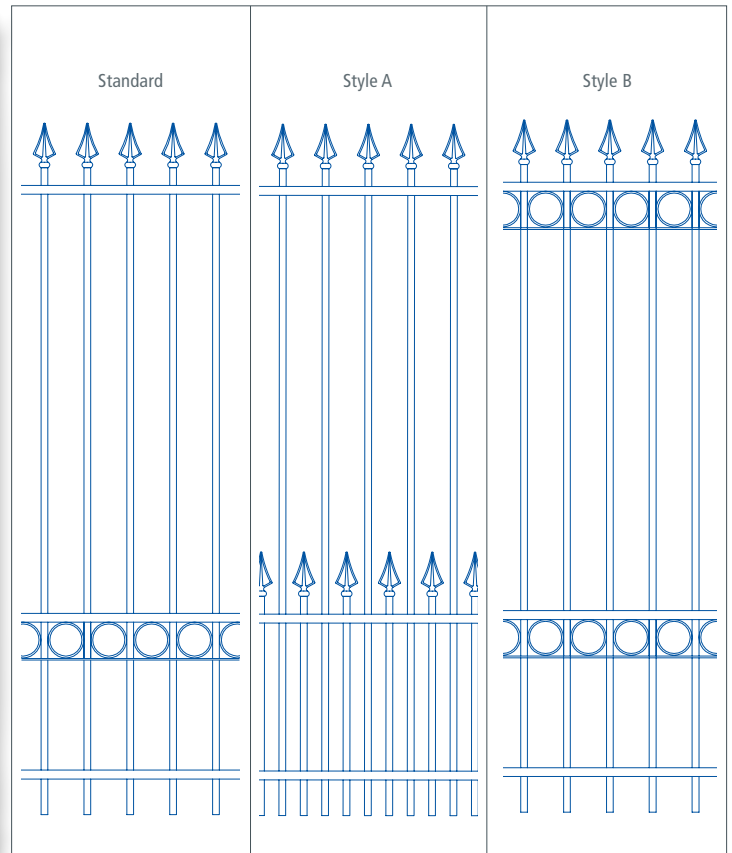
- ▶ Perimeters
- ▶ Medium - High risk
- ▶ Residential

GATES

Matching single leaf and double leaf gates available

FINIAL OPTIONS





| HEIGHT (mm) | POST CENTRES (mm) | POST DIMENSIONS (mm) | OVERALL POST LENGTH (mm) |
|-------------|-------------------|----------------------|--------------------------|
| 1000 | 3000 | 60 x 60 | 1600 |
| 1200 | 3000 | 60 x 60 | 1800 |
| 1500 | 3000 | 60 x 60 | 2100 |
| 1800 | 3000 | 60 x 60 | 2500 |
| 2000 | 3000 | 60 x 60 | 2800 |
| 2500 | 3000 | 80 x 60 | 3300 |
| 3000 | 2400 | 80 x 60 | 3800 |

POST OPTIONS

- Overlength set in concrete as standard
- Base plated to bolt down onto concrete
- Cranked to suit wall mounting
- Post options include flat capped and ball top

FINISHES

- Hot dip galvanised to BS EN ISO 1461 as standard
- Hot dip galvanised and powder coated to BS EN 13438
- Marine coat for installations within 500m of salt water or an estuary

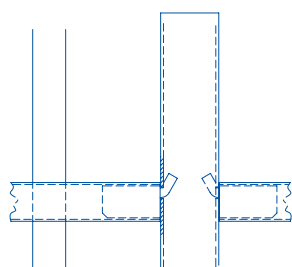
STANDARD COLOURS

- Black RAL 9005
- Green RAL 6005
- Other colours are available on request

BARBICAN IMPERIAL® RESIDENTIAL

These striking steel vertical railings deliver an imposing first impression for any garden or housing project. The panel is constructed so the pale goes through the rail, ensuring there are no visible joints and anti-vandal fixings are used to attach the panel to its post, enhancing the fencing's security credentials.

- Standard heights 1000mm and 1250mm
- 119mm pale pitch
- 19mm pales
- Flat top pales as standard
- Panels can be manufactured to accommodate sloping ground
- **25-year service life guarantee**



Post to panel fixings



| HEIGHT (mm) | POST CENTRES (mm) | POST DIMENSIONS (mm) | OVERALL POST LENGTH (mm) |
|-------------|-------------------|----------------------|--------------------------|
| 1000 | 3000 | 60 x 60 | 1600 |
| 1250 | 3000 | 60 x 60 | 1850 |

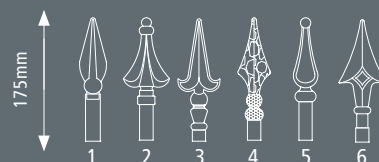
APPLICATIONS

- ▶ Parks
- ▶ Public areas
- ▶ Schools

GATES

Matching single leaf and double leaf gates available

FINIAL OPTIONS



POST OPTIONS

- Overlength set in concrete as standard
- Base plated to bolt down onto concrete
- Cranked to suit wall mounting

FINISHES

- Hot dip galvanised to BS EN ISO 1461 as standard
- Hot dip galvanised and powder coated to BS EN 13438
- Marine coat for installations within 500m of salt water or an estuary

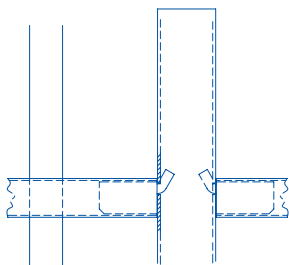
STANDARD COLOURS

- Black RAL 9005
- Green RAL 6005
- Other colours are available on request

SENTRY® RESIDENTIAL

Sentry® Residential is perfect for use in residential applications, with their round 19mm pale giving the railing a contemporary look, an attractive and lighter alternative to our standard Sentry® fencing. The panels are fully welded tubular semi pale-through-rail construction, with concealed, vandal proof rail to post fixings.

- Standard height 1000mm and 1250mm
- Panels can be manufactured to accommodate sloping ground
- 19mm diameter pales
- 25-year service life guarantee



Post to panel fixings



| HEIGHT (mm) | POST CENTRES (mm) | POST DIMENSIONS (mm) | OVERALL POST LENGTH (mm) |
|-------------|-------------------|----------------------|--------------------------|
| 1000 | 3000 | 60 x 60 | 1600 |
| 1250 | 3000 | 60 x 60 | 1850 |

APPLICATIONS

- ▶ Parks
- ▶ Public areas
- ▶ Schools

GATES

Matching single leaf and double leaf gates available

STANDARD COLOURS

- Black RAL 9005
- Green RAL 6005
- Other colours are available on request

POST OPTIONS

- Overlength set in concrete as standard
- Base plated to bolt down onto concrete
- Cranked to suit wall mounting

FINISHES

- Hot dip galvanised to BS EN ISO 1461 as standard
- Hot dip galvanised and powder coated to BS EN 13438
- Marine coat for installations within 500m of salt water or an estuary

ESTATE RAILINGS



Jacksons Estate railings are strong, adaptable and cost effective replacement for traditional flat bar railings.

- Tubular and Rectangular Hollow Section construction
- All fittings galvanised or stainless steel
- **25-year service life guarantee**

APPLICATIONS

- ▶ Parkland
- ▶ Residential developments

PANELS

Estate railings are constructed from 50 x 25 x 2 Rectangular Hollow Section posts with Ø19mm circular hollow section rails, with overall panel width at 1980mm.

GATES

Matching single leaf and double leaf gates available



Fence

| HEIGHT (mm) | PANEL WIDTH (mm) | POST DIMENSIONS (mm) | RAILS (mm) |
|-------------|------------------|----------------------|------------|
| 1200 | 2000 | 50 x 25 | Ø19 |

Gates

- Constructed from 50 x 30mm
- Hanging stile is curved at top
- Gates can be modified for automation

| HEIGHT (mm) | WIDTH (mm) |
|-------------|------------|
| 1215 | 1200 |
| 1215 | 3000 |
| 1215 | 3600 |

POST OPTIONS

- Overlength set in concrete as standard
- Base plated to bolt down onto concrete
- Cranked to suit wall mounting

FINISHES

- Hot dip galvanised to BS EN ISO 1461 as standard
- Hot dip galvanised and powder coated to BS EN 13438
- Marine coat for installations within 500m of salt water or an estuary

STANDARD COLOURS

- Black RAL 9005
- Green RAL 6005
- Other colours are available on request

PEDESTRIAN GUARDRAIL



Specifically designed for class 1 highway applications, Jacksons Pedestrian Guardrail provides an effective roadside barrier for pedestrians while maintaining good visibility for motorists. The welded hollow tubular rail and solid pale construction is extremely strong and features a bolt-together design for ease of installation or replacement.

1. **Standard** - with inline pales from top to bottom
 2. **See-through** - with inline pales and clear visibility slot below top rail
 3. **Staggered** - infill bars are staggered
- Can be manufactured to suit gradients and radius
 - Custom designs available
 - 25-year service life guarantee

APPLICATIONS

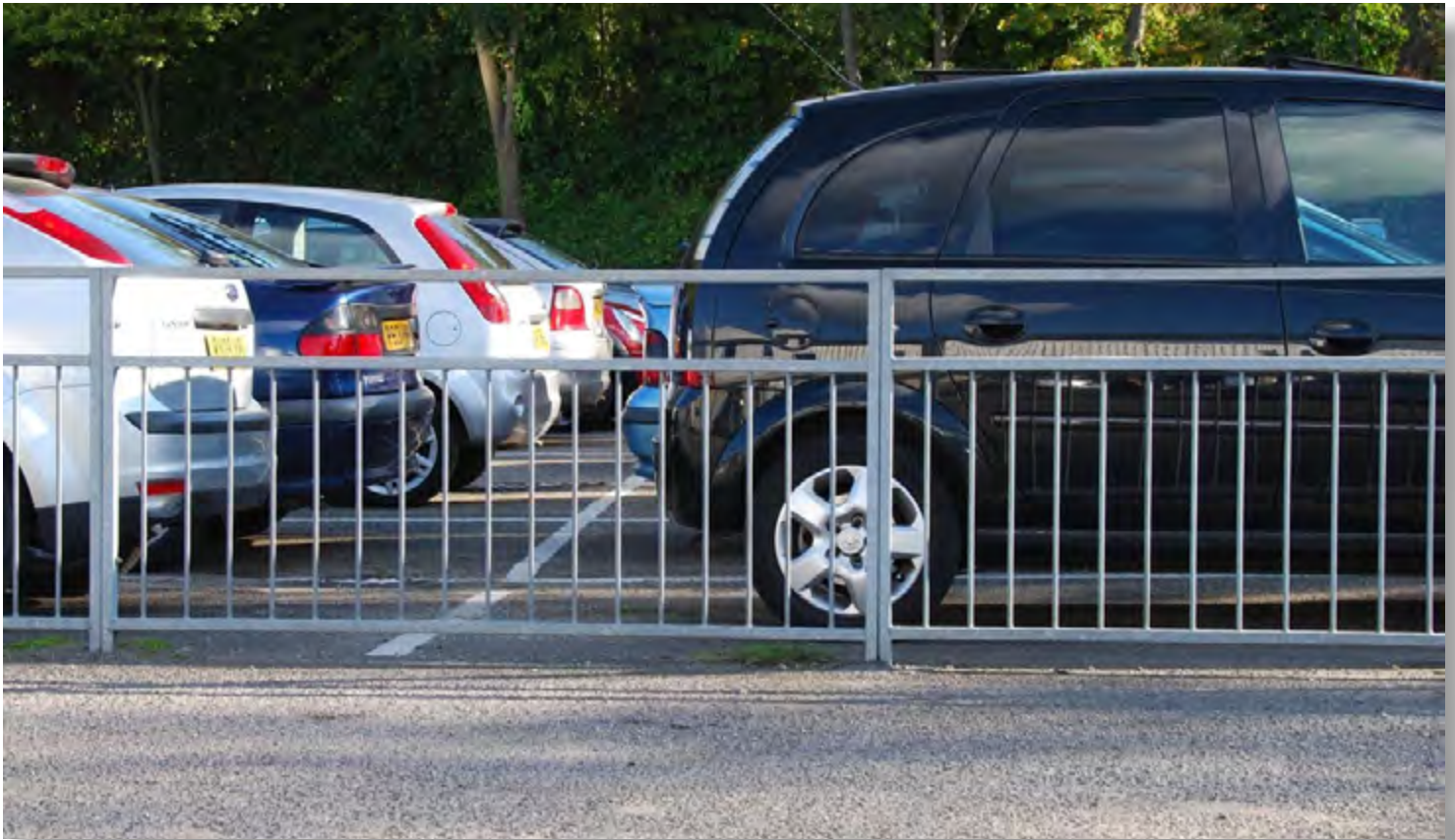
- ▶ Pedestrian fencing
- ▶ Schools
- ▶ Road infrastructure

PANELS

Pedestrian Guardrail is constructed from 50x30mm vertical and horizontal rails with 12mm solid pales at 112mm centres. Panels are 2000mm or 1830mm wide.

GATES

Matching single leaf and double leaf gates available



| HEIGHT (mm) | POST CENTRES (mm) | POST DIMENSIONS (mm) | OVERALL POST LENGTH (mm) |
|-------------|-------------------|----------------------|--------------------------|
| 1100 | 1000 | 50 x 30 | 1370 |
| 1100 | 1800 | 50 x 30 | 1370 |
| 1100 | 2000 | 50 x 30 | 1370 |

LEG OPTIONS

- Overlength set in concrete as standard
- Base plated to bolt down onto concrete

FINISHES

- Hot dip galvanised to BS EN ISO 1461 as standard
- Hot dip galvanised and powder coated to BS EN 13438
- Marine coat for installations within 500m of salt water or an estuary

STANDARD COLOURS

- Black RAL 9005
- Green RAL 6005
- Other colours are available on request