

Harlequin Studio™

Harlequin Studio is produced from a particularly hard-wearing vinyl and its formulation focuses on the demands of dancers. The result is a slip-resistant floor that offers dancers added confidence for demanding choreography and movement.

Harlequin Studio's firm but lightweight foam backing provides protection against hard sub-floors and is a great choice when touring. It's ideal for aerobics, zumba, hip-hop, jazz, street, ballet, contemporary and modern dance.

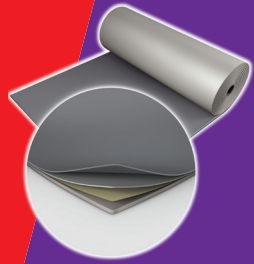
Harlequin Studio is designed for dance, studio and stage use and is specified for loose-lay or permanent installation within dance institutions, dance studios, schools and theatres. It's also a superb choice as the vinyl dance surface in conjunction with a Harlequin sprung floor.

Specification guide

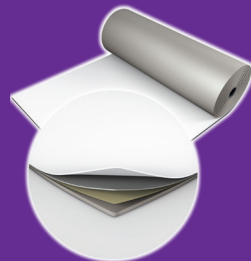
Permanent or Portable	Both
Roll width	1.5m
Roll length	10m, 15m, 18m, 20m, 25m
Colours	Black, Grey, Dark grey, White
Thickness	3mm
Weight	2.3kg/m ²
Fire rating	Bfl-s1 (EN 13501-1)
Health and Safety	REACH compliant



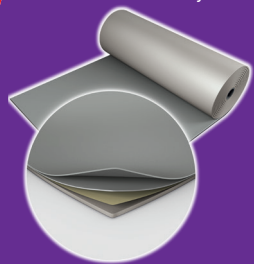
Dark grey - 890



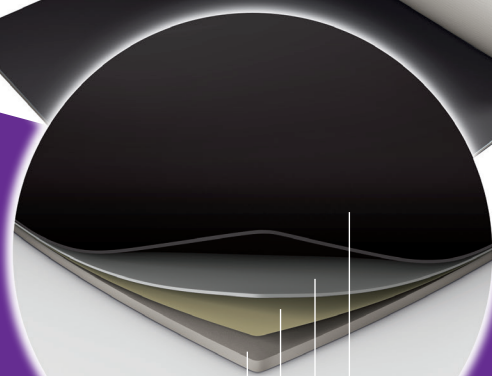
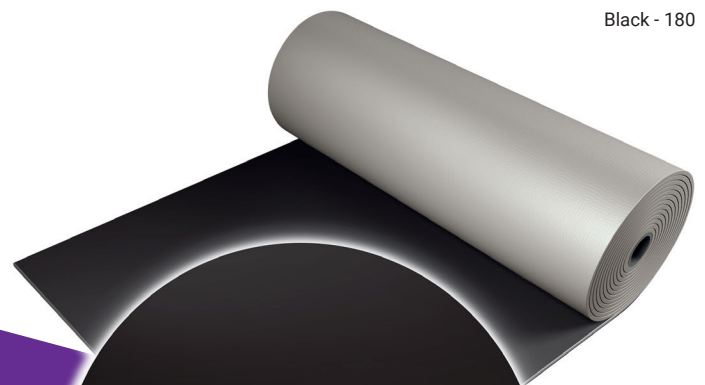
White - 100



Grey - 880



Black - 180



Slip-resistant dance surface

PVC support

Woven mineral fibre reinforcement

Closed-cell foam backing

If you would like further information, advice and samples please contact us on +44(0) 1892 514 888 or enquiries@harlequinfloors.com



HARLEQUIN
www.harlequinfloors.com