

INTRAFORM DM Low Profile

Heavy duty aluminium Entrance Matting that combines the performance advantages of extra wide fibre with the low profile design for versatile installation.



STRENGTH RATING - HIGH



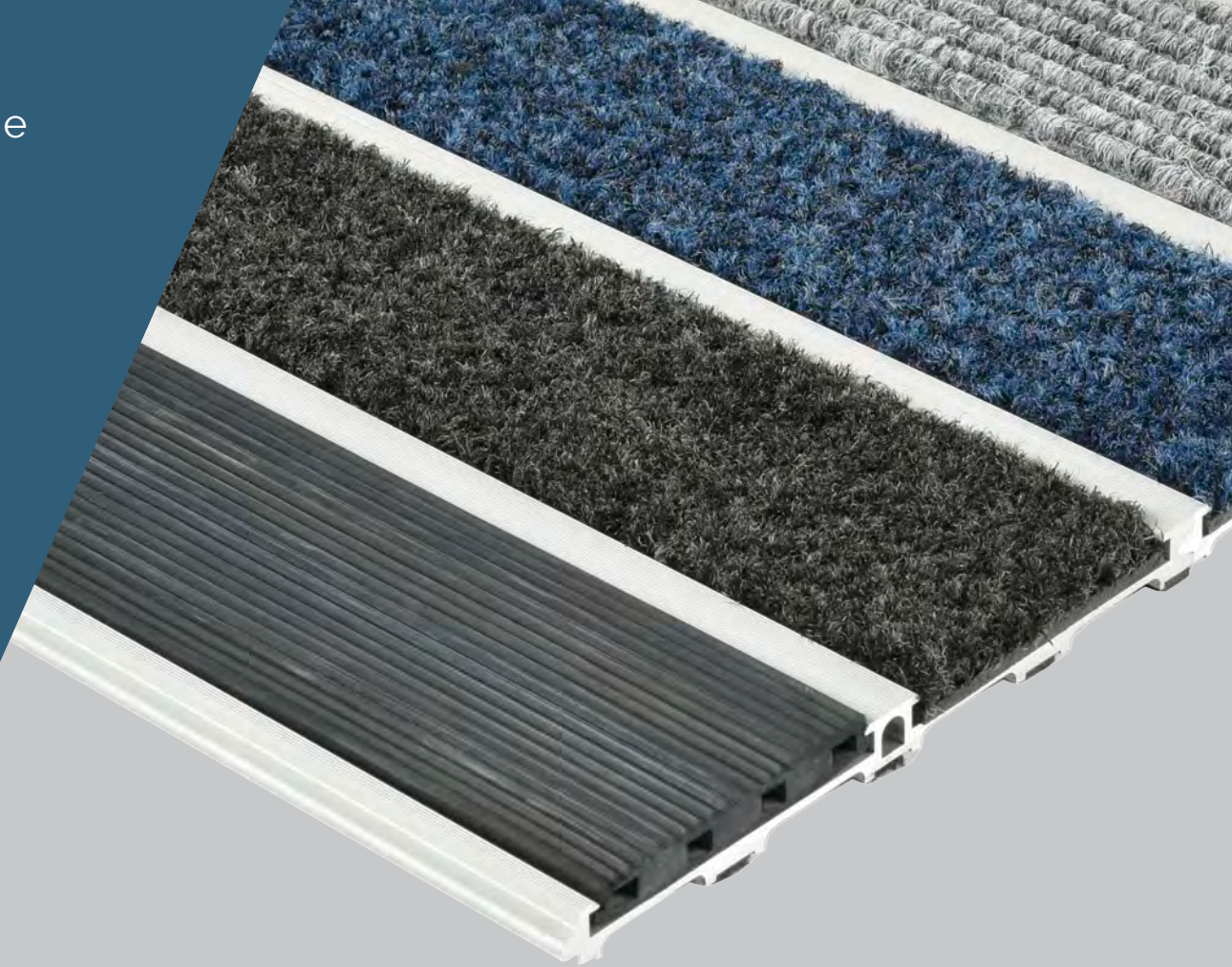
ZONAL OPTION - 1 AND 2



WIDE RANGE OF DESIGN
OPTIONS



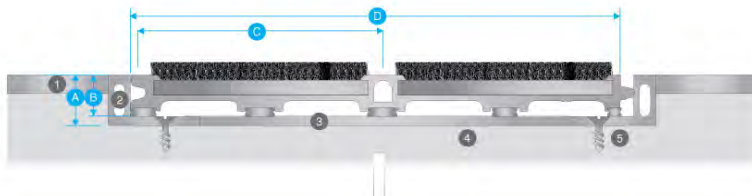
WARRANTY - 10 YEARS



SPECIFICATION

Product Reference	INTRAform DM Low Profile Entrance Matting
Strength Rating	High - suitable for areas with heavy foot and wheeled traffic
Zonal Location	Use Zone 1 inserts for external areas Use Zone 2 inserts for internal areas Combination Zone 1 & 2 inserts can be specified for dual performance Surface mounted applications with use of ramped edging
Construction	100% recycled aluminium construction. Closed construction Interlocking Plank system.
Typical Application	High Traffic locations such as Shopping Centres, Commercial Offices, retail stores etc
Design Options	Wide range of design options available Bespoke anodised to special order
Weight	10.5kg/m ²
Matwell Framing	INT014
Slip Rating	Will vary with insert, in excess of PTV 38
Warranty	10 years
Sustainability	100% recycled aluminum. All inserts recyclable/re-usable 100% Econyl Fibre (Premier and Elite)

PROFILE



A	14mm	1	Finished Floor surface
B	11.5mm	2	Recessed matwell frame
C	66.4mm Module	3	Levelling latex to matwell base
D	132.8mm Plank Size	4	Screed sub-floor
		5	Screw fixings

INSERTS - Zone 1



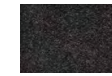
Ribbed Rubber



Multidirectional Rubber

INSERTS - Zone 2

Elite Polyamide



608 Black



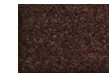
607 Anthracite



606 Grey



602 Blue



605 Brown



609 Purple



610 Turquoise



604 Coco



601 Red

Premier Polyamide



130 Black

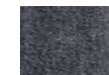


138 Slate Grey

Select Polyamide



50 Black



73 Grey

Linear Polypropylene



443 Anthracite



451 Grey

PROFILE COLOUR OPTIONS

Standard Silver



Black



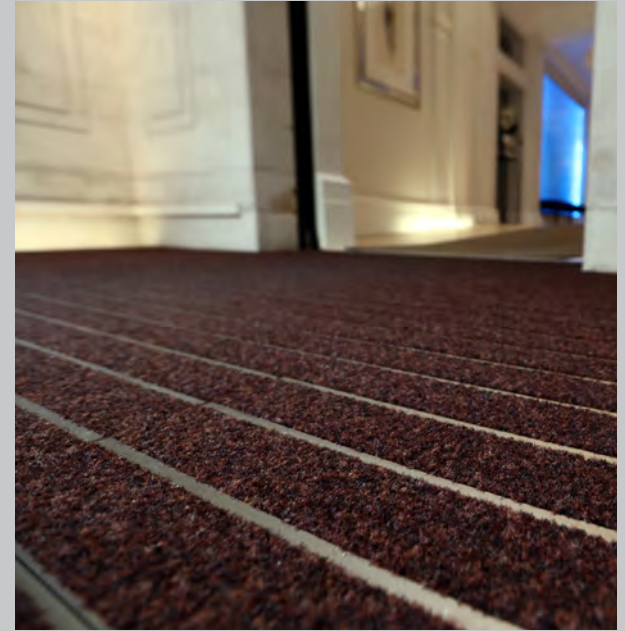
Bronze



Bespoke







INTRAform DM Low Profile



- 1. 99 Bishopsgate
- 2. NEC Resorts World
- 3. 5 Stratton Street
- 4. Buchanan Galleries
- 5. 99 Bishopsgate



INTRAS.
SYSTEMS

14 HEADLANDS BUSINESS PARK, SALISBURY ROAD, BLASHFORD, RINGWOOD, BH24 3PB
01425 472000 WWW.INTRASYSTEMS.CO.UK