



BEKAERT Brickforce® Value Engineering Example

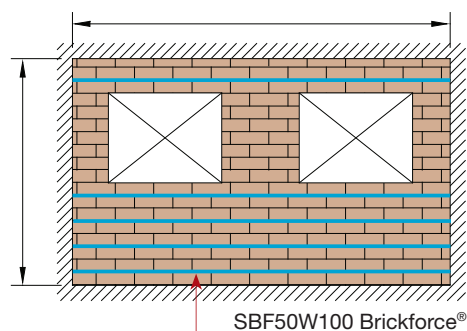
Brickforce® can be used to good effect in the design and construction of wind loaded masonry facades. Detailed below is an example of how Brickforce® can significantly reduce cost and greatly simplify design and construction compared with windposts.

EXAMPLE

Masonry façade panel 6m long x 2.7 m high with 2 window openings 1.5 m long x 1.2 m high

- Wall make up – 102 brick outer leaf, 140 mm block inner leaf
- Design load for panel capacity = 1 kN/m²
- Design using A5 Method 3 – BS5628:2, Annex A.

Panel with Brickforce



Cost & Time – Brickforce®:

Brickforce® tasks:

Install 5 courses to block leaf
6m long, lapping and cutting
as required

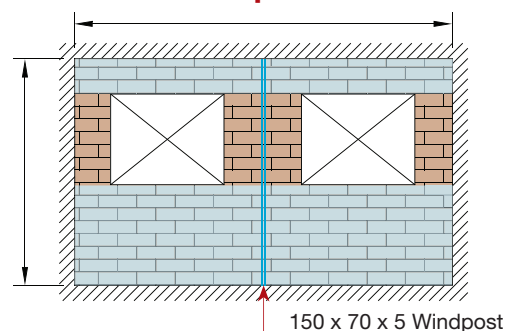


Time for installation – 20 minutes



Installed cost (material & labour) = £90

Panel with windpost



Cost & Time – windpost:

Windpost tasks:

Setting out for location
Drilling and fixing at high and low level
Cutting of blocks to both sides of windpost
Installing shear ties from windpost to blocks
Mastic joint at vertical line of windpost
Scaffold/access provision for high level
fixing and mastic jointing



Time for installation – 5 to 6 hours



Installed cost (material & labour) = £225

***Saving at least 5 hours and £135 (60% cost saving) per panel**



Brickforce® - Quality

Brickforce® is manufactured to the high quality standards of BSEN845:3 and has CE mark accreditation. This means the quality and performance of Brickforce® is assured for design to BS5628 & EC6 – the UK & European codes of practice for designing masonry.

Brickforce® - Services

Bekaert offer the following technical information and support for Brickforce®:

- ✓ Product Guide
- ✓ Design Guide and Loading Tables
- ✓ CPD Seminar – Reinforced Masonry Design and Applications
- ✓ Free Design Service

** Costs provided by Eden Construction (Midlands) Ltd Specialist Brickwork Contractor – June 2010*

For further information on how Brickforce® can help to simplify design and significantly reduce the cost of solving masonry construction contact:

Bekaert

Tel.: 01142 427480

Fax: 01142 427490

building.uk@bekaert.com