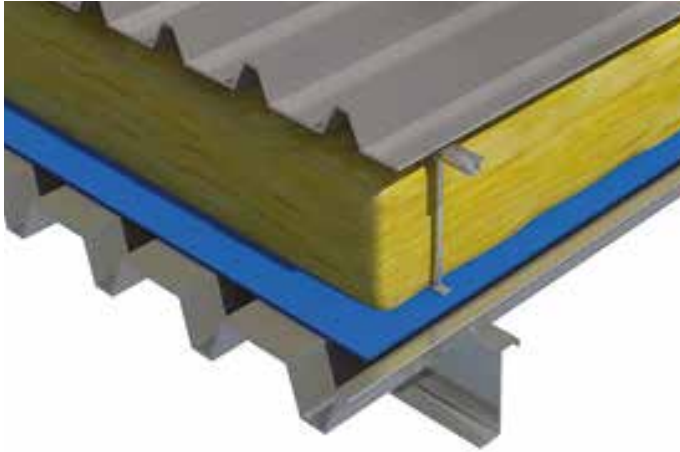


Cladding Mat 32

Typical applications: Metal clad roofs and walls

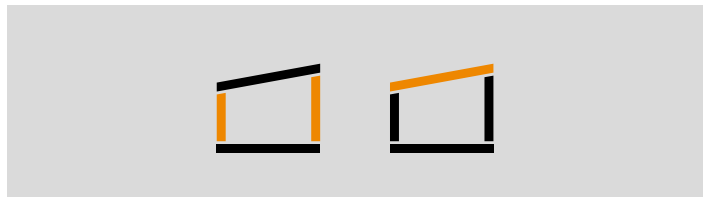


Description

Superglass Cladding Mat 32 is a resilient, high performance and non-combustible glass mineral wool insulation roll with exceptional durability and high tear strength. The roll is supplied 1200mm wide to allow quick installation and minimum on-site cutting and waste.

Application

Superglass Cladding Mat 32 is designed to provide thermal and acoustic insulation in the walls and roofs of profiled metal clad buildings and portable buildings.



BRE Green Guide Rating

Cladding Mat 32 has a generic BRE Green Guide Rating of A+.



Fire Performance

Cladding Mat 32 has a fire classification of A1 (the highest possible rating) when tested to BS EN 13501-1 Reaction to Fire.



Thermal Insulation

Cladding Mat 32 has a thermal conductivity of 0.032W/mK.



Recycled Content

Cladding Mat 32 is manufactured from up to 84% recycled glass.



Easy & Quick To Install

Lightweight for ease of installation.



Cladding Mat 32 | Characteristics

Product dimensions and information						
Thickness (mm)	Length (m)	Width (mm)	Pack Area (m ²)	R-Value (m ² K/W)	Packs per pallet	Code
50	6.60	1200	7.92	1.55	24	3552
60	5.80	1200	6.96	1.85	24	3195
75	4.40	1200	5.28	2.30	24	3550
80	4.40	1200	5.28	2.50	24	3194
85	4.15	1200	4.98	2.65	24	3185
90	3.90	1200	4.68	2.80	24	3551
100	3.90	1200	4.68	3.10	24	3549
110	3.50	1200	4.20	3.40	24	3547
120	3.20	1200	3.84	3.75	24	3554
130	3.00	1200	3.60	4.05	24	3556
140	2.80	1200	3.36	4.35	24	3555

Cladding Mat 32 is a non-standard product

Thermal Performance

Cladding Mat 32 has a declared thermal conductivity of 0.032W/mK.

Fire Performance

All Superglass products are deemed non-combustible and have a fire classification of A1 (the highest possible rating) when tested to BS EN 13501-1 Reaction to Fire.

Environment

- Manufactured in accordance with ISO 14001:2015 - Environmental Management Systems (EMS).
- Zero Ozone Depletion Potential (ODP) & zero Global Warming Potential (GWP).
- Generic BRE Green Guide Rating of A+.

Recycled Content

All Superglass products are manufactured from up to 84% recycled glass which would otherwise go to landfill.

Standards

Manufactured in accordance with:

- BS EN 13162:2012(+A1:2015) Thermal insulation products for buildings - Factory made mineral wool (MW) products
- BS EN 13172: 2012 Thermal insulation products - Evaluation of conformity.

Quality

All Superglass products are manufactured in accordance with BS EN ISO 9001:2015 - Quality Management Systems (QMS).

Durability

All Superglass products are non-hygroscopic, will not rot, degrade or sustain vermin and will not encourage the growth of mould, bacteria or fungi.

Vapour Resistance

All Superglass products offer negligible vapour resistance allowing vapour to pass freely through the insulation.

Handling & Storage

All Superglass products are easy to handle, cut and install. The products are supplied compression packed in polythene to provide short term protection only. For long term protection, the product must be stored indoors or under a waterproof covering in order to protect from weather damage. The products should not be left permanently exposed to the elements.

Certification

- CE Marked to BS EN 13162:2012(+A1:2015).
- Designation Code = MW-13162-T1.
- A copy of the Cladding Mat 32 Declaration of Performance (DoP) ref: DOP0001 can be downloaded from the Superglass website.

Associated Products

Cladding Mat 35 | Cladding Mat 37 | Cladding Mat 40

Building Information Modelling (BIM)

BIM objects for this product can be downloaded from www.bimstore.co.uk or www.superglass.co.uk



Superglass Insulation Limited. Thistle Industrial Estate, Kerse Road, Stirling, Scotland FK7 7QQ

Technical

Hotline: **0808 1645 134**

Email: technical@superglass.co.uk

Sales

Tel: **01786 451170**

Email: sales@superglass.co.uk

Social

www.facebook.com/superglassinsulationltd

www.twitter.com/superglassins

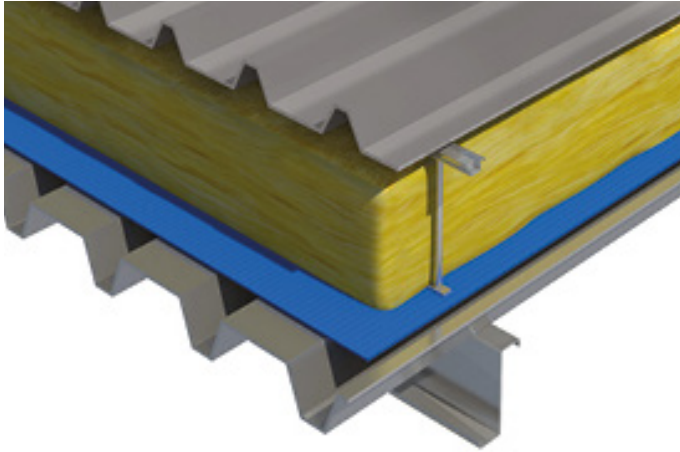
www.linkedin.com/company/superglass-insulation-ltd

All rights are reserved, including those of photomechanical reproduction and storage in electronic media. Commercial use of the processes and work activities presented in this document is not permitted. Extreme caution was observed when putting together the information, texts and illustrations in this document. Nevertheless, errors cannot quite be ruled out. The publisher and editors cannot assume legal responsibility or any liability whatever for incorrect information and the consequences thereof. The publisher and editors will be grateful for improvement suggestions and details of errors pointed out.



Cladding Mat 35

Typical applications: Metal clad roofs and walls



Description

Superglass Cladding Mat 35 is a resilient, high performance and non-combustible glass mineral wool insulation roll with exceptional durability and high tear strength. The roll is supplied 1200mm wide to allow quick installation and minimum on-site cutting and waste.

Application

Superglass Cladding Mat 35 is designed to provide thermal and acoustic insulation in the walls and roofs of profiled metal clad buildings and portable buildings.



BRE Green Guide Rating

Cladding Mat 35 has a generic BRE Green Guide Rating of A+.



Fire Performance

Cladding Mat 35 has a fire classification of A1 (the highest possible rating) when tested to BS EN 13501-1 Reaction to Fire.



Thermal Insulation

Cladding Mat 35 has a thermal conductivity of 0.035W/mK.



Recycled Content

Cladding Mat 35 is manufactured from up to 84% recycled glass.



Easy & Quick To Install

Lightweight for ease of installation.



Cladding Mat 35 | Characteristics

Product dimensions and information						
Thickness (mm)	Length (m)	Width (mm)	Pack Area (m ²)	R-Value (m ² K/W)	Packs per pallet	Code
60	10.50	1200	12.60	1.70	24	5093
80	7.80	1200	9.36	2.25	24	5097
90	5.00	1200	6.00	2.55	24	5094
100	6.30	1200	7.56	2.85	24	5098
120	5.00	1200	6.00	3.40	24	5435
140	4.00	1200	4.80	4.00	24	5394
150	4.12	1200	4.94	4.25	24	5044
160	4.25	1200	5.10	4.55	24	5096
170	3.90	1200	4.68	4.85	24	3593
180	3.30	1200	3.96	5.10	24	3548
200	3.00	1200	3.60	5.70	24	3592

Cladding Mat 35 is a non-standard product

Thermal Performance

Cladding Mat 35 has a declared thermal conductivity of 0.035W/mK.

Fire Performance

All Superglass products are deemed non-combustible and have a fire classification of A1 (the highest possible rating) when tested to BS EN 13501-1 Reaction to Fire.

Environment

- Manufactured in accordance with ISO 14001:2015 - Environmental Management Systems (EMS).
- Zero Ozone Depletion Potential (ODP) & zero Global Warming Potential (GWP).
- Generic BRE Green Guide Rating of A+.

Recycled Content

All Superglass products are manufactured from up to 84% recycled glass which would otherwise go to landfill.

Standards

Manufactured in accordance with:

- BS EN 13162:2012(+A1:2015) Thermal insulation products for buildings - Factory made mineral wool (MW) products
- BS EN 13172: 2012 Thermal insulation products - Evaluation of conformity.

Quality

All Superglass products are manufactured in accordance with BS EN ISO 9001:2015 - Quality Management Systems (QMS).

Durability

All Superglass products are non-hygroscopic, will not rot, degrade or sustain vermin and will not encourage the growth of mould, bacteria or fungi.

Vapour Resistance

All Superglass products offer negligible vapour resistance allowing vapour to pass freely through the insulation.

Handling & Storage

All Superglass products are easy to handle, cut and install. The products are supplied compression packed in polythene to provide short term protection only. For long term protection, the product must be stored indoors or under a waterproof covering in order to protect from weather damage. The products should not be left permanently exposed to the elements.

Certification

- CE Marked to BS EN 13162:2012(+A1:2015).
- Designation Code = MW-13162-T1.
- A copy of the Cladding Mat 35 Declaration of Performance (DoP) ref: DOP0004 can be downloaded from the Superglass website.

Associated Products

Cladding Mat 32 | Cladding Mat 37 | Cladding Mat 40

Building Information Modelling (BIM)

BIM objects for this product can be downloaded from www.bimstore.co.uk or www.superglass.co.uk



Superglass Insulation Limited. Thistle Industrial Estate, Kerse Road, Stirling, Scotland FK7 7QQ

Technical

Hotline: **0808 1645 134**

Email: technical@superglass.co.uk

Sales

Tel: **01786 451170**

Email: sales@superglass.co.uk

Social

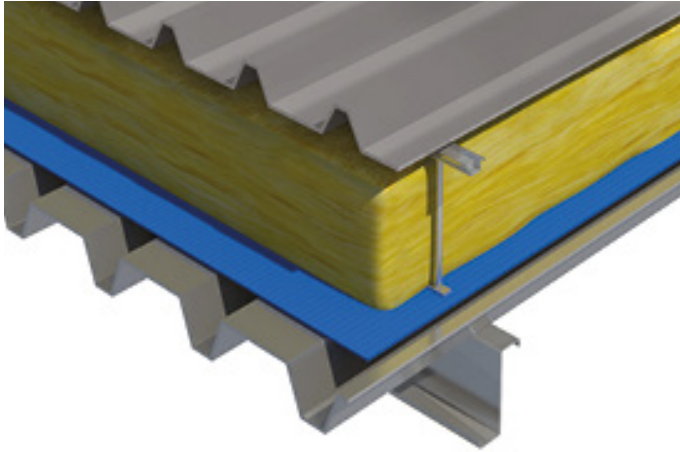
- www.facebook.com/superglassinsulationltd
- www.twitter.com/superglassins
- www.linkedin.com/company/superglass-insulation-ltd

All rights are reserved, including those of photomechanical reproduction and storage in electronic media. Commercial use of the processes and work activities presented in this document is not permitted. Extreme caution was observed when putting together the information, texts and illustrations in this document. Nevertheless, errors cannot quite be ruled out. The publisher and editors cannot assume legal responsibility or any liability whatever for incorrect information and the consequences thereof. The publisher and editors will be grateful for improvement suggestions and details of errors pointed out.



Cladding Mat 37

Typical applications: Metal clad roofs and walls



Description

Superglass Cladding Mat 37 is a resilient, medium dense and non-combustible glass mineral wool insulation roll with exceptional durability and high tear strength. The roll is supplied 1200mm wide to allow quick installation and minimum on-site cutting and waste.

Application

Superglass Cladding Mat 37 is designed to provide thermal and acoustic insulation in the walls and roofs of profiled metal clad buildings and portable buildings.



BRE Green Guide Rating

Cladding Mat 37 has a generic BRE Green Guide Rating of A+.



Fire Performance

Cladding Mat 37 has a fire classification of A1 (the highest possible rating) when tested to BS EN 13501-1 Reaction to Fire.



Thermal Insulation

Cladding Mat 37 has a thermal conductivity of 0.037W/mK.



Recycled Content

Cladding Mat 37 is manufactured from up to 84% recycled glass.



Easy & Quick To Install

Lightweight for ease of installation.



Cladding Mat 37 | Characteristics

Product dimensions and information						
Thickness (mm)	Length (m)	Width (mm)	Pack Area (m ²)	R-Value (m ² K/W)	Packs per pallet	Code
80	9.50	1200	11.40	2.15	24	3600
100	7.80	1200	9.36	2.70	24	3624
110	7.00	1200	8.40	2.95	24	3631
120	6.55	1200	7.86	3.20	24	3625
140	5.60	1200	6.72	3.75	24	3626
150	5.20	1200	6.24	4.05	24	3632
160	4.90	1200	5.88	4.30	24	3627
180	4.35	1200	5.22	4.85	24	3628
200	3.50	1200	4.20	5.40	24	3629
220	3.25	1200	3.90	5.90	24	3668

Cladding Mat 37 is a non-standard product

Thermal Performance

Cladding Mat 37 has a declared thermal conductivity of 0.037W/mK.

Fire Performance

All Superglass products are deemed non-combustible and have a fire classification of A1 (the highest possible rating) when tested to BS EN 13501-1 Reaction to Fire.

Environment

- Manufactured in accordance with ISO 14001:2015 - Environmental Management Systems (EMS).
- Zero Ozone Depletion Potential (ODP) & zero Global Warming Potential (GWP).
- Generic BRE Green Guide Rating of A+.

Recycled Content

All Superglass products are manufactured from up to 84% recycled glass which would otherwise go to landfill.

Standards

Manufactured in accordance with:

- BS EN 13162:2012(+A1:2015) Thermal insulation products for buildings - Factory made mineral wool (MW) products
- BS EN 13172: 2012 Thermal insulation products - Evaluation of conformity.

Quality

All Superglass products are manufactured in accordance with BS EN ISO 9001:2015 - Quality Management Systems (QMS).

Durability

All Superglass products are non-hygroscopic, will not rot, degrade or sustain vermin and will not encourage the growth of mould, bacteria or fungi.

Vapour Resistance

All Superglass products offer negligible vapour resistance allowing vapour to pass freely through the insulation.

Handling & Storage

All Superglass products are easy to handle, cut and install. The products are supplied compression packed in polythene to provide short term protection only. For long term protection, the product must be stored indoors or under a waterproof covering in order to protect from weather damage. The products should not be left permanently exposed to the elements.

Certification

- CE Marked to BS EN 13162:2012(+A1:2015).
- Designation Code = MW-13162-T1.
- A copy of the Cladding Mat 37 Declaration of Performance (DoP) ref: DOP0014 can be downloaded from the Superglass website.

Associated Products

Cladding Mat 32 | Cladding Mat 35 | Cladding Mat 40

Building Information Modelling (BIM)

BIM objects for this product can be downloaded from www.bimstore.co.uk or www.superglass.co.uk



Superglass Insulation Limited. Thistle Industrial Estate, Kerse Road, Stirling, Scotland FK7 7QQ

Technical

Hotline: **0808 1645 134**

Email: technical@superglass.co.uk

Sales

Tel: **01786 451170**

Email: sales@superglass.co.uk

Social

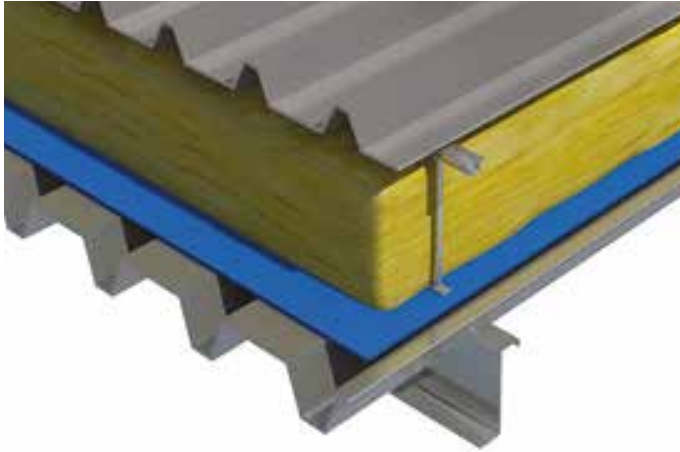
- www.facebook.com/superglassinsulationltd
- www.twitter.com/superglassins
- www.linkedin.com/company/superglass-insulation-ltd

All rights are reserved, including those of photomechanical reproduction and storage in electronic media. Commercial use of the processes and work activities presented in this document is not permitted. Extreme caution was observed when putting together the information, texts and illustrations in this document. Nevertheless, errors cannot quite be ruled out. The publisher and editors cannot assume legal responsibility or any liability whatever for incorrect information and the consequences thereof. The publisher and editors will be grateful for improvement suggestions and details of errors pointed out.



Cladding Mat 40

Typical applications: Metal clad roofs and walls

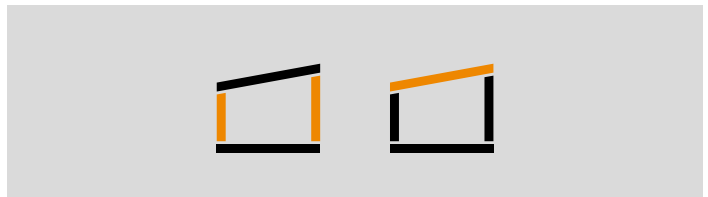


Description

Superglass Cladding Mat 40 is a resilient, medium dense and non-combustible glass mineral wool insulation roll with exceptional durability and high tear strength. The roll is supplied 1200mm wide to allow quick installation and minimum on-site cutting and waste.

Application

Superglass Cladding Mat 40 is designed to provide thermal and acoustic insulation in the walls and roofs of profiled metal clad buildings and portable buildings.



BRE Green Guide Rating

Cladding Mat 40 has a generic BRE Green Guide Rating of A+.



Fire Performance

Cladding Mat 40 has a fire classification of A1 (the highest possible rating) when tested to BS EN 13501-1 Reaction to Fire.



Thermal Insulation

Cladding Mat 40 has a thermal conductivity of 0.040W/mK.



Recycled Content

Cladding Mat 40 is manufactured from up to 84% recycled glass.



Easy & Quick To Install

Lightweight for ease of installation.



Cladding Mat 40 | Characteristics

Product dimensions and information						
Thickness (mm)	Length (m)	Width (mm)	Pack Area (m ²)	R-Value (m ² K/W)	Packs per pallet	Code
60	16.00	1200	19.20	1.50	24	3085
80	12.10	1200	14.52	2.00	24	3578
90	10.65	1200	12.78	2.25	24	3577
100	9.95	1200	11.94	2.50	24	3576
120	8.05	1200	9.66	3.00	24	3575
130	6.75	1200	8.10	3.25	24	3118
140	7.00	1200	8.40	3.50	24	3574
150	6.00	1200	7.20	3.75	24	3511
160	6.05	1200	7.26	4.00	24	3573
180	5.45	1200	6.54	4.50	24	3572
200	4.60	1200	5.52	5.00	24	3571
220	3.20	1200	3.84	5.50	24	3020
230	3.10	1200	3.72	5.75	24	3391
240	3.00	1200	3.60	6.00	24	3021

Cladding Mat 40 is a non-standard product

Thermal Performance

Cladding Mat 40 has a declared thermal conductivity of 0.040W/mK.

Fire Performance

All Superglass products are deemed non-combustible and have a fire classification of A1 (the highest possible rating) when tested to BS EN 13501-1 Reaction to Fire.

Environment

- Manufactured in accordance with ISO 14001:2015 - Environmental Management Systems (EMS).
- Zero Ozone Depletion Potential (ODP) & zero Global Warming Potential (GWP).
- Generic BRE Green Guide Rating of A+.

Recycled Content

All Superglass products are manufactured from up to 84% recycled glass which would otherwise go to landfill.

Standards

Manufactured in accordance with:

- BS EN 13162:2012(+A1:2015) Thermal insulation products for buildings - Factory made mineral wool (MW) products
- BS EN 13172: 2012 Thermal insulation products - Evaluation of conformity.

Quality

All Superglass products are manufactured in accordance with BS EN ISO 9001:2015 - Quality Management Systems (QMS).

Durability

All Superglass products are non-hygroscopic, will not rot, degrade or sustain vermin and will not encourage the growth of mould, bacteria or fungi.

Vapour Resistance

All Superglass products offer negligible vapour resistance allowing vapour to pass freely through the insulation.

Handling & Storage

All Superglass products are easy to handle, cut and install. The products are supplied compression packed in polythene to provide short term protection only. For long term protection, the product must be stored indoors or under a waterproof covering in order to protect from weather damage. The products should not be left permanently exposed to the elements.

Certification

- CE Marked to BS EN 13162:2012(+A1:2015).
- Designation Code = MW-13162-T1.
- A copy of the Cladding Mat 40 Declaration of Performance (DoP) ref: DOP0008 can be downloaded from the Superglass website.

Associated Products

Cladding Mat 32 | Cladding Mat 35 | Cladding Mat 37

Building Information Modelling (BIM)

BIM objects for this product can be downloaded from www.bimstore.co.uk or www.superglass.co.uk



Superglass Insulation Limited. Thistle Industrial Estate, Kerse Road, Stirling, Scotland FK7 7QQ

Technical

Hotline: **0808 1645 134**

Email: technical@superglass.co.uk

Sales

Tel: **01786 451170**

Email: sales@superglass.co.uk

Social

www.facebook.com/superglassinsulationltd

www.twitter.com/superglassins

www.linkedin.com/company/superglass-insulation-ltd

All rights are reserved, including those of photomechanical reproduction and storage in electronic media. Commercial use of the processes and work activities presented in this document is not permitted. Extreme caution was observed when putting together the information, texts and illustrations in this document. Nevertheless, errors cannot quite be ruled out. The publisher and editors cannot assume legal responsibility or any liability whatever for incorrect information and the consequences thereof. The publisher and editors will be grateful for improvement suggestions and details of errors pointed out.

