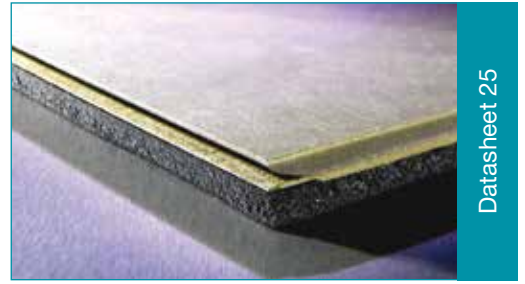
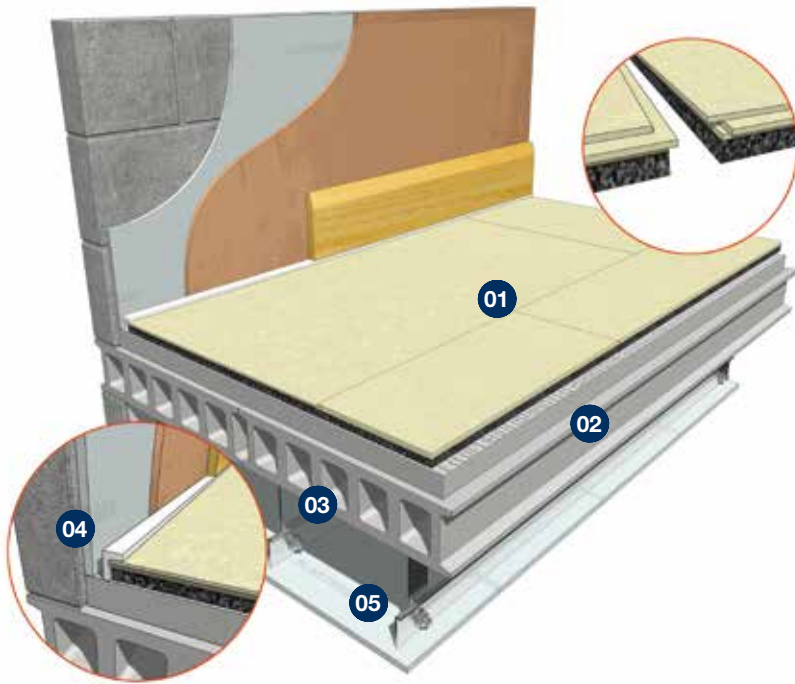


Acoustic Deck 19

CONCRETE FLOOR OVERLAY BOARD



Datasheet 25



- 01** JCW Acoustic Deck 19
- 02** 40mm min directly applied sand or proprietary screed (min 80kg.m²)
- 03** 150mm (min) Density 300kg/m² Concrete Floor
- 04** JCW L Shaped or Flat Perimeter Edging Strip detail
- 05** Metal Ceiling System with 100mm (min) void and 1 layer x 8kgs/m² gypsum based board

Product Code: 1174

Moisture Resistant MDF based acoustic overlay board for concrete floors: 9mm t&g laminated to an acoustic resilient layer

Robust Detail (Registered Sites)

- Verified independent UKAS accredited laboratory test data that meets the Robust Detail requirements. Pre-completion testing is not required
- Acoustic Deck 19 = FFT-5 Floating Floor types E-FC-1,2 & E-FS-1 (Refer to Robust Details Handbook for full specification)

PCT/PT & Refurbishment

- Verified independent UKAS accredited laboratory test data is based on the floor structure illustrated above
- It is essential all components are correctly installed and detailed to meet the requirements where Pre-completion Sound Testing is required
- Offers good impact sound improvement
- Deck ready for final floor finish e.g. laminates, carpets and carpet tiles (vinyls may require additional floor preparation)
- In Refurbishments: Overlaid onto flat timber or concrete floors

Sheet Size: 19mm x 600mm x 1200mm (0.72 m²) Weight: 5kg

Reduction in Impact Sound Transmission as tested in UKAS accredited laboratory: Δ Lw 18 dB

Method of Compliance

Robust Detail, PCT/PT (Scotland)

Ancillary Products

- 1130 JCW Flat Edging Strip (50 Lm x 150mm x 5mm) or
- 1170 JCW Universal L Shaped Strip (2 Lm x 53mm x 23mm)
- 1196 JCW Waterproof PVA Adhesive (1 Litre)
- 1027 JCW Acoustic Sealant (310ml)

Domestic Dwellings | Offices | Hotels | Conference Centres | Leisure Centres | Schools | Restaurants | Showrooms



Unit 32-34 Waters Meeting Development
Britannia Way, Bolton, BL2 2HH

Sales helpline **01204 548400**
8.30am - 5.00pm Monday to Friday

sales@acoustic-supplies.com
www.acoustic-supplies.com

Basic guidance notes for installation of JCW Acoustic Decking 19, 28, 32, 33, 34, 37, 37c

JCW Acoustic Decking floor panels are supplied in 2 standard board sizes dependant on the material.

1. T&G Chipboard 2400mm x 600mm.
2. T&G Cement Board 1200 x 600 & T&G MDF 1200 x 600mm.
All acoustic panels are laid as a floating floor (i.e. no mechanical fixings). The boards must be dry and acclimatised at least 24 hours prior to installation, this will minimise any expansion or contraction after installation.

The substrate or joists should be flat, dry, and free from all debris. Acoustic boards are best laid towards the end of the project to protect from general trades, high floor loadings and moisture leading to expansion.

- The floor area/s to be overlaid should be carefully planned prior to commencing installation to minimise wastage. There are two overlay board types; **1) Non-Structural** onto an existing sub-floor. **2) Structural** for Direct to Joist. The boards must be laid on to flat or levelled joists in the opposite direction of the joists. Direct to Joist boards can also be laid onto an existing sub-floor.
- Ensure that the wall surfaces are prepared (plaster skimmed or plaster boarded down to the level of the sub-deck). Any gaps will facilitate the unwanted transmission of sound via the wall edges.
- Apply 5mm foam flat wall **JCW Perimeter Edging Strip or L shaped strips** to the base of all perimeter walls allowing approximately 15mm excess foam above the finished acoustic board height, this can later be folded down on top of the acoustic floor surface to isolate the skirting boards. Any unwanted excess foam can then be cut back with a sharp knife.
- Remove any tongues at the wall edges, then cut & scribe the first corner board into place and butt up to (do not compress the JCW Perimeter Edging Strip) the Edging Strip. All T&G board joints must be fully adhesive bonded using our recommended adhesive. The last board in the first row should be cut to length and the off-cut carried forward to begin the second row.

- Proceed with the second and successive rows ensuring that all board joints are staggered. The last row of boards will require accurate cutting & scribing to butt up to the wall. **Any minor gaps** between the **JCW Perimeter Edging Strip** and the acoustic board must be filled with JCW Acoustic Sealant/Mastic. It is imperative that the JCW Perimeter Edging Strip **is not compressed** in order to maintain acoustic isolation and an allowance for expansion.
- **At doorways:** the acoustic floor **should not be continuous** with adjoining areas. At the door threshold leave a 5mm gap between the adjoining acoustic boards and fill with JCW Acoustic Sealant. This action will ensure that the acoustic integrity is maintained within the room that is being Sound Tested. Note; if the sub-floor at the doorways is not flat, the acoustic boards may require additional base support to reduce compressive joint movement. Additionally the surface joints could be sanded up to 5mm to level if required.
- The finished floor should not be walked on for a period of up to 24 hours to allow the adhesive to cure undisturbed. NOTE; PVA adhesive will not cure in temperatures below 5° Celsius. Ensure that the board joint adhesive has fully cured prior to overlaying any final floor covering.

Any penetrations through the acoustic floor and beneath the separating ceiling must be correctly detailed and dealt with on a site by site basis.

Further assistance is available via our Sales and Technical Helpline below.

Disclaimer: The product and installation information contained in this Data Sheet and General Installation Guide is to the best of our knowledge correct. Please contact us direct, prior to starting works, for the latest information to enable confirmation of the specification.

Domestic Dwellings | Offices | Hotels | Conference Centres | Leisure Centres | Schools | Restaurants | Showrooms



Unit 32-34 Waters Meeting Development
Britannia Way, Bolton, BL2 2HH

Sales helpline **01204 548400**
8.30am - 5.00pm Monday to Friday

sales@acoustic-supplies.com
www.acoustic-supplies.com