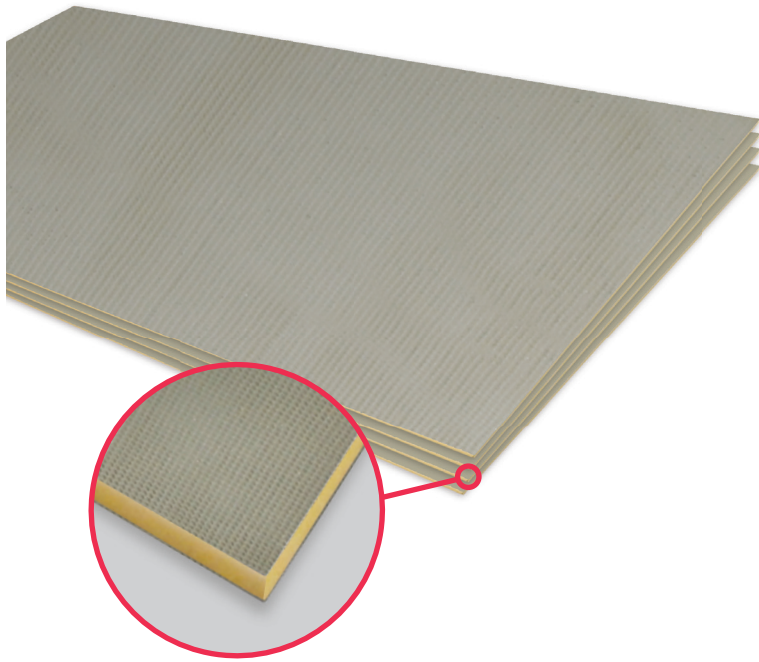


# thermo Sphere

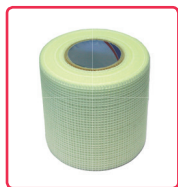
## ACCESSORIES | FLOOR | TIMBER INSULATION BOARD



- Use with ThermoSphere underfloor heating
- For timber substrates
- Fibre reinforced and cement coated
- Water resistant and rot proof
- Improves heating efficiency

### Timber insulation board

Stock Code	U-Value (W/m2K)	Thickness (MM)	Board Size (M)	Board Area (M <sup>2</sup> )	Pack Area (M <sup>2</sup> )	Pack Quantity
TIB-006-08	3.05	6	1.2 x 0.6	0.72	5.76	8
TIB-010-06	2.23	10	1.2 x 0.6	0.72	4.32	6
TIB-012-06	1.91	12	1.2 x 0.6	0.72	4.32	6
TIB-020-06	1.33	20	1.2 x 0.6	0.72	4.32	6
TIB-030-04	0.95	30	1.2 x 0.6	0.72	2.88	4
TIB-040-03	0.74	40	1.2 x 0.6	0.72	2.16	3
TIB-050-02	0.60	50	1.2 x 0.6	0.72	1.44	2



#### Joint Tape

Reinforce the joints between timber insulation boards before tiling



#### Metal & Plastic Washers

Use with fixing screws at 300mm centres around the edge of timber insulation boards



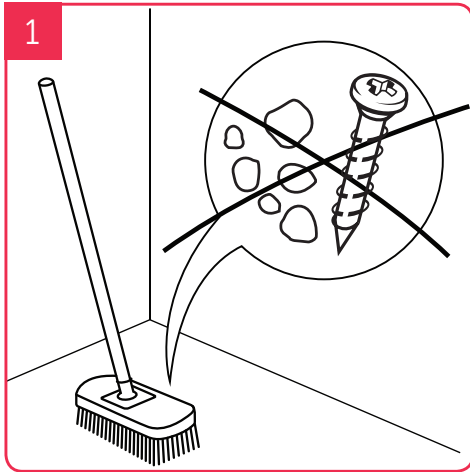
#### Fixing Screws 32mm

Use in conjunction with fixing washers to secure timber insulation boards

### Accessories

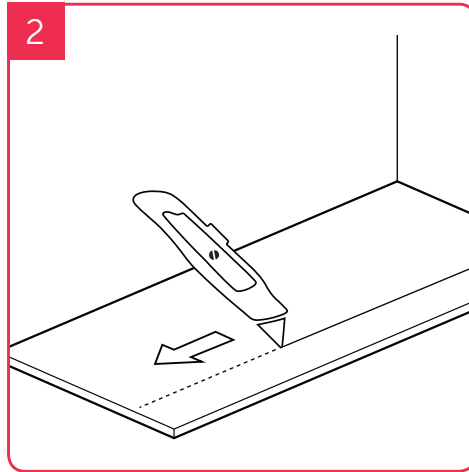
Stock Code	Description	Size	Unit
TIB-JT-01	Joint Tape	25m	Ea
TIB-MFW-01	Metal Washers	Ø35mm	pk 100
TIB-FS-01	Fixing Screws	32mm	pk 1000
TIB-PFW-01	Plastic Washers	Ø40mm	pk 100

## Installation overview



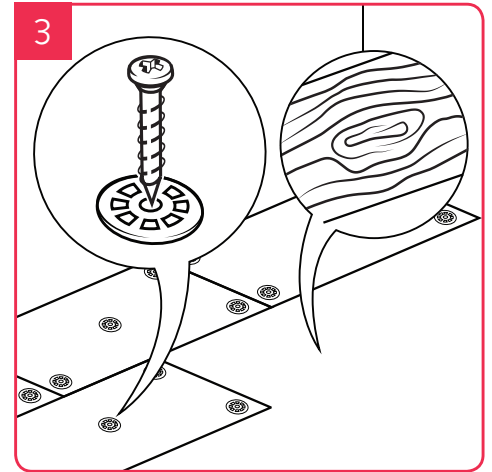
### Prepare substrate

Ensure the timber substrate is secure and free from dust and any debris



### Cut to size

Cut boards to size with a sharp blade and position over the floor area



### Secure in place

Fix in position using fixing screws and washers at 300mm centres, or additionally adhere with flexible tile adhesive

## Cutting

Cut the Timber insulation board to size to suit your room layout. Timber insulation board can be cut very easily using a sharp blade or wood saw. Please take appropriate care.

## Lay out and fix

Ensure your substrate is secure, clean and free of dust and loose particles. Set out your cut boards onto the floor space and fix in place using appropriate fixings. We recommend 32mm fixing screws and metal fixing washers.

Allow about 8-10 mechanical fixings per board, fixing in the middle of the board as well as round the perimeter and the join to the adjacent board. This will maximise the strength and lateral stability of the floor.

## Finishing

For a high quality finish make sure all boards are flush, and tape over the seams using reinforcing tape.

Your floor is now prepared and ready for underfloor heating.

## Waterproofing

If you are installing our products in a wet room, you should now proceed with installation of the ThermoSphere tanking paste to fully waterproof the room and guard against moisture.

### Technical Data

Compressive Strength	300 kpa
Thermal Conductivity	0.033 W/Mk
Water Absorption	0.6%
Density (foam)	36Kg/m <sup>3</sup>
Temperature Range	-50°C to +75°C
Fire Performance	Class 0

### Floor build up example

